

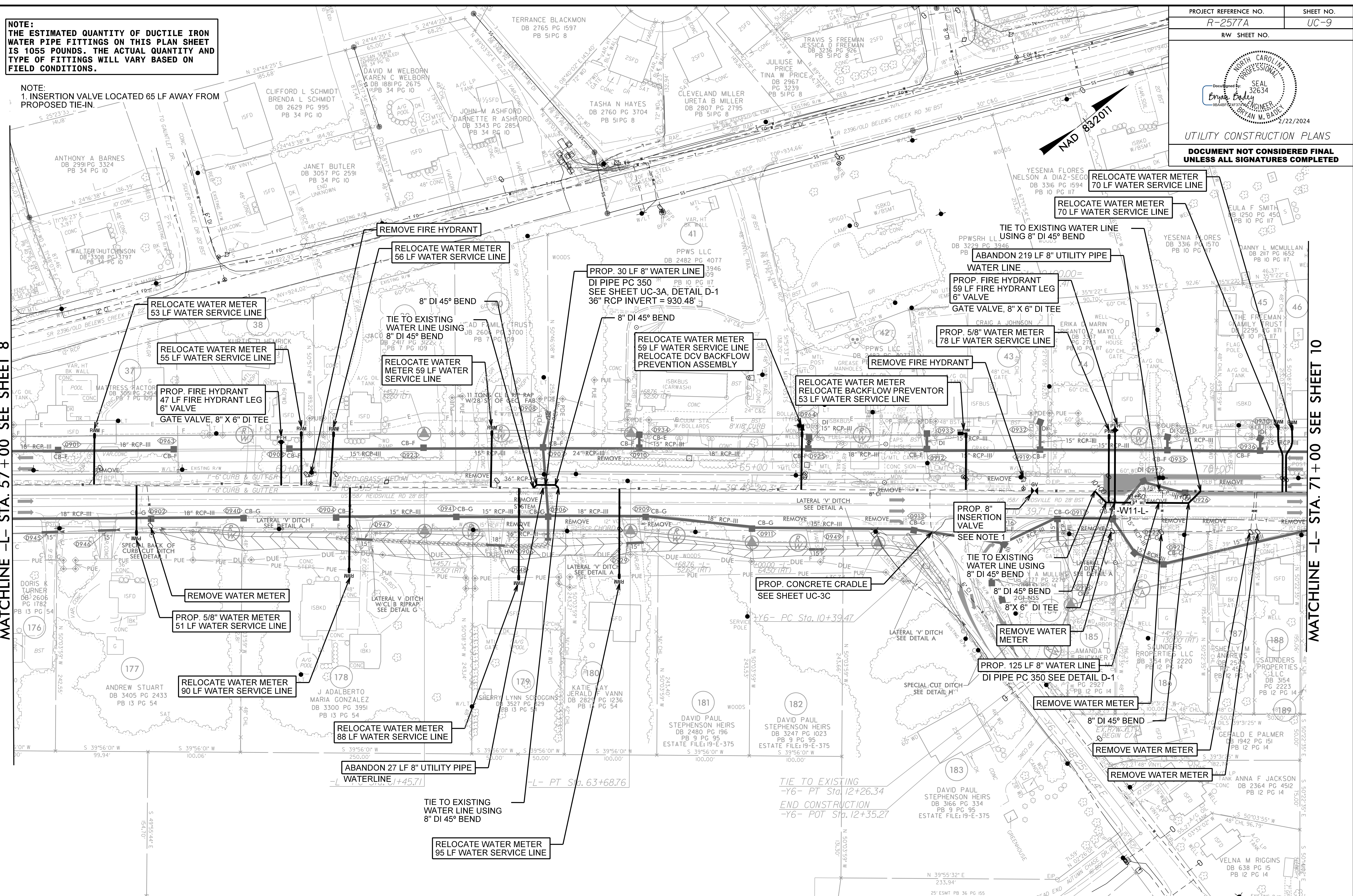
UTILITY CONSTRUCTION PLANS
DOCUMENT NOT CONSIDERED FINAL
UNLESS ALL SIGNATURES COMPLETED

NOTE:
THE ESTIMATED QUANTITY OF DUCTILE IRON
WATER PIPE FITTINGS ON THIS PLAN SHEET
IS 1055 POUNDS. THE ACTUAL QUANTITY AND
TYPE OF FITTINGS WILL VARY BASED ON
FIELD CONDITIONS.

NOTE:
1. INSERTION VALVE LOCATED 65 LF AWAY FROM
PROPOSED TIE-IN.

MATCHLINE -L- STA. 57+00 SEE SHEET 8

MATCHLINE -L- STA. 71+00 SEE SHEET 10



CARLA D MEADOWS
DB 2498 PG 901
PB 36 PG 155

FOR -W11-L- PROFILE SEE SHT. UC-33



8/17/2024 R:\civil\titles\Engineering\UC\Proj\R-2577A_r.dwg UC09_esh.dgn