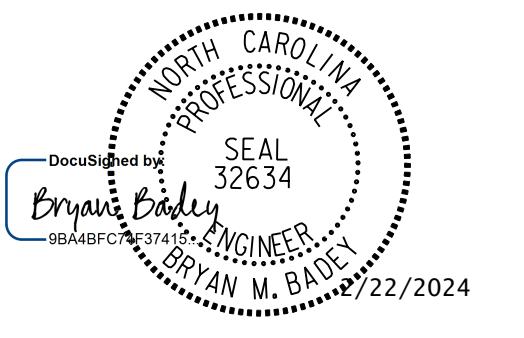
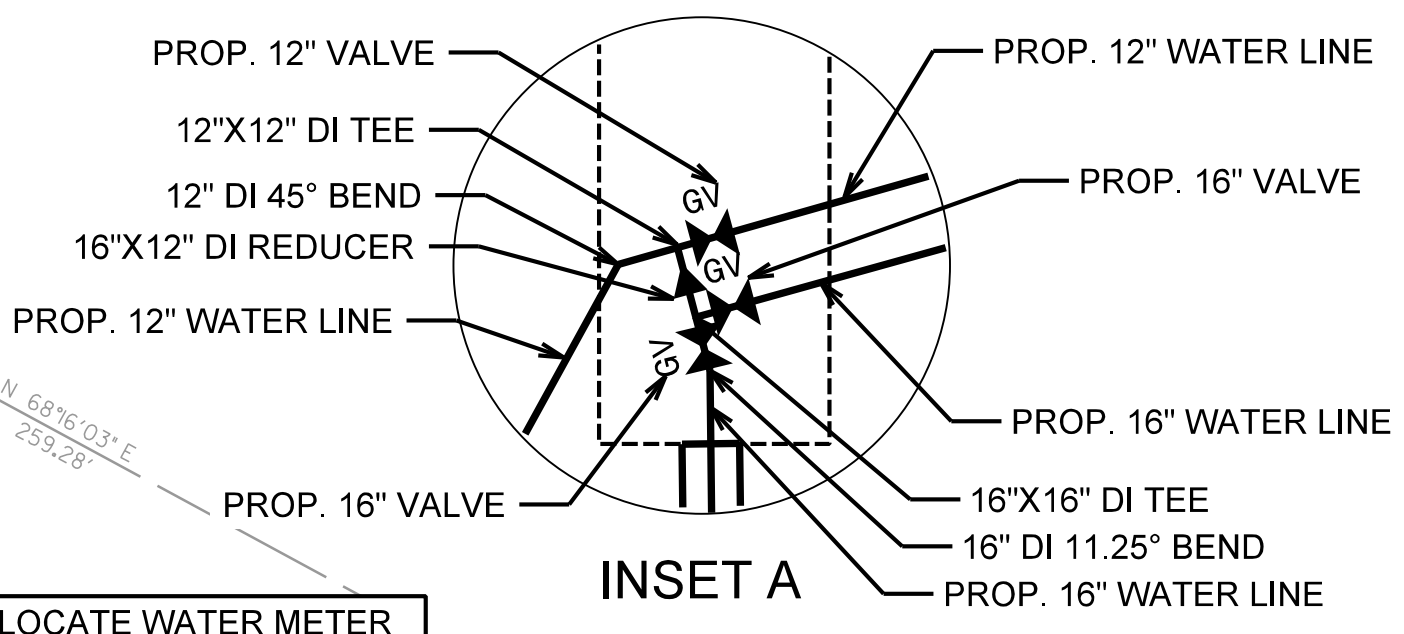


UTILITY CONSTRUCTION PLANS
DOCUMENT NOT CONSIDERED FINAL
UNLESS ALL SIGNATURES COMPLETED



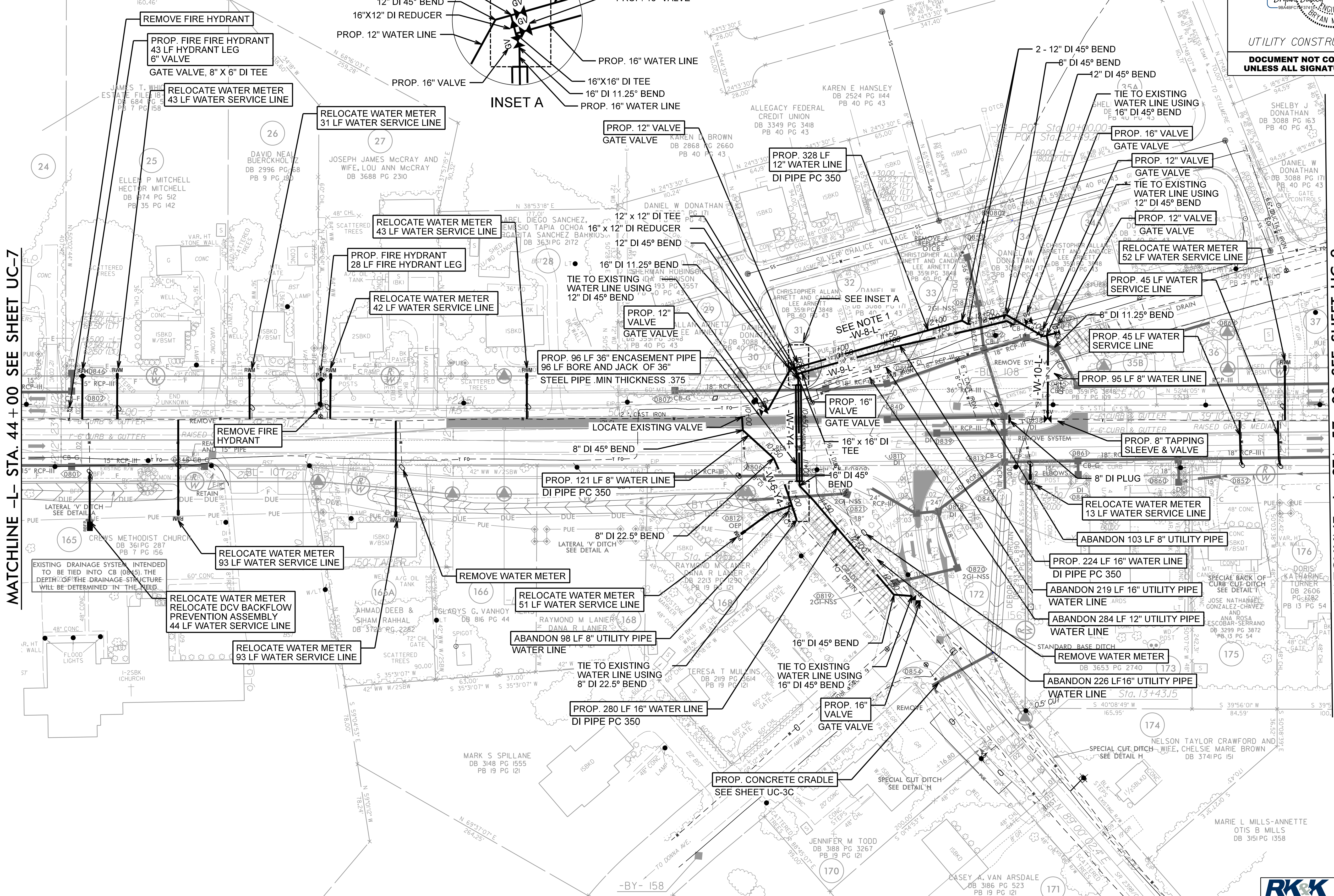
NOTE:
THE ESTIMATED QUANTITY OF DUCTILE IRON WATER PIPE FITTINGS ON THIS PLAN SHEET IS 6645 POUNDS. THE ACTUAL QUANTITY AND TYPE OF FITTINGS WILL VARY BASED ON FIELD CONDITIONS.

NOTE:
1. CONTRACTOR TO INSTALL FILL BEFORE INSTALLING -W8-L-



MATCHLINE -L- STA. 44 + 00 SEE SHEET UC-7

MATCHLINE -L- STA. 57 + 00 SEE SHEET UC-9



FOR -W6-Y4- PROFILE SEE SHT. UC-32
FOR -W7-Y4- PROFILE SEE SHT. UC-33
FOR -W8-L- PROFILE SEE SHT. UC-33
FOR -W9-L- PROFILE SEE SHT. UC-33
FOR -W10-L- PROFILE SEE SHT. UC-33



8/17/2024

C:\Users\james\OneDrive\Engineering\UC\Proj\R-2577A-rdj\08_UC08_esh.dgn