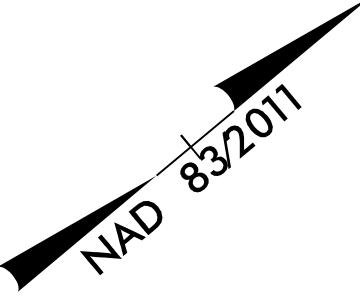
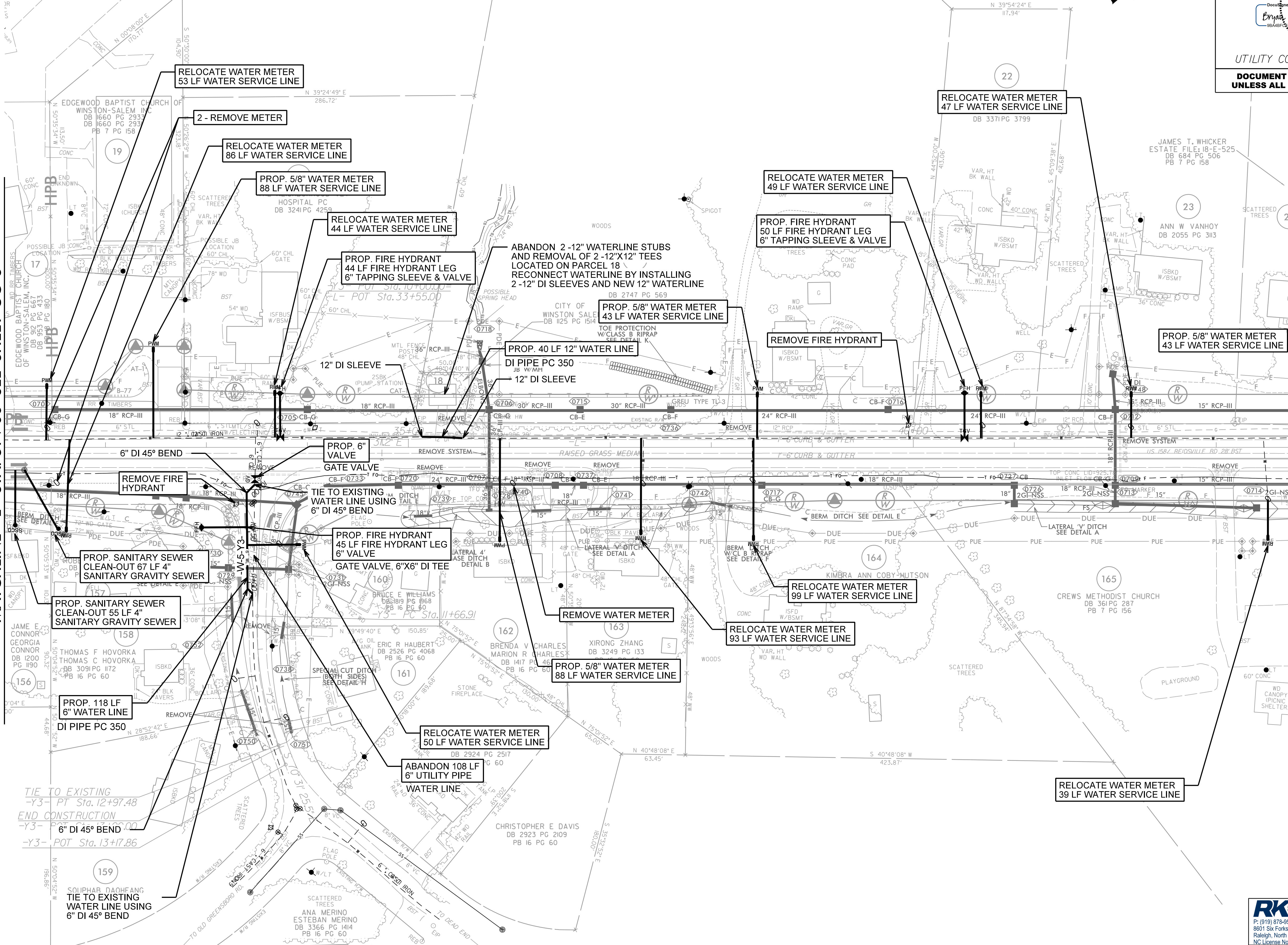


NOTE:
THE ESTIMATED QUANTITY OF DUCTILE IRON WATER PIPE FITTINGS ON THIS PLAN SHEET IS 725 POUNDS. THE ACTUAL QUANTITY AND TYPE OF FITTINGS WILL VARY BASED ON FIELD CONDITIONS.



MATCHLINE -L- STA. 31+00 SEE SHEET UC-6

MATCHLINE -L- STA. 44+00 SEE SHEET UC-8



TIE TO EXISTING
-Y3- PT Sta. 12+97.48
END CONSTRUCTION
-Y3-
-Y3- POT Sta. 13+17.86

FOR -W5-L- PROFILE SEE SHT. UC-32

8/17/2024 R:\Projects\Engineering\UC\Proc\N-R-2577A-rdj\07_UC07_esh.dgn