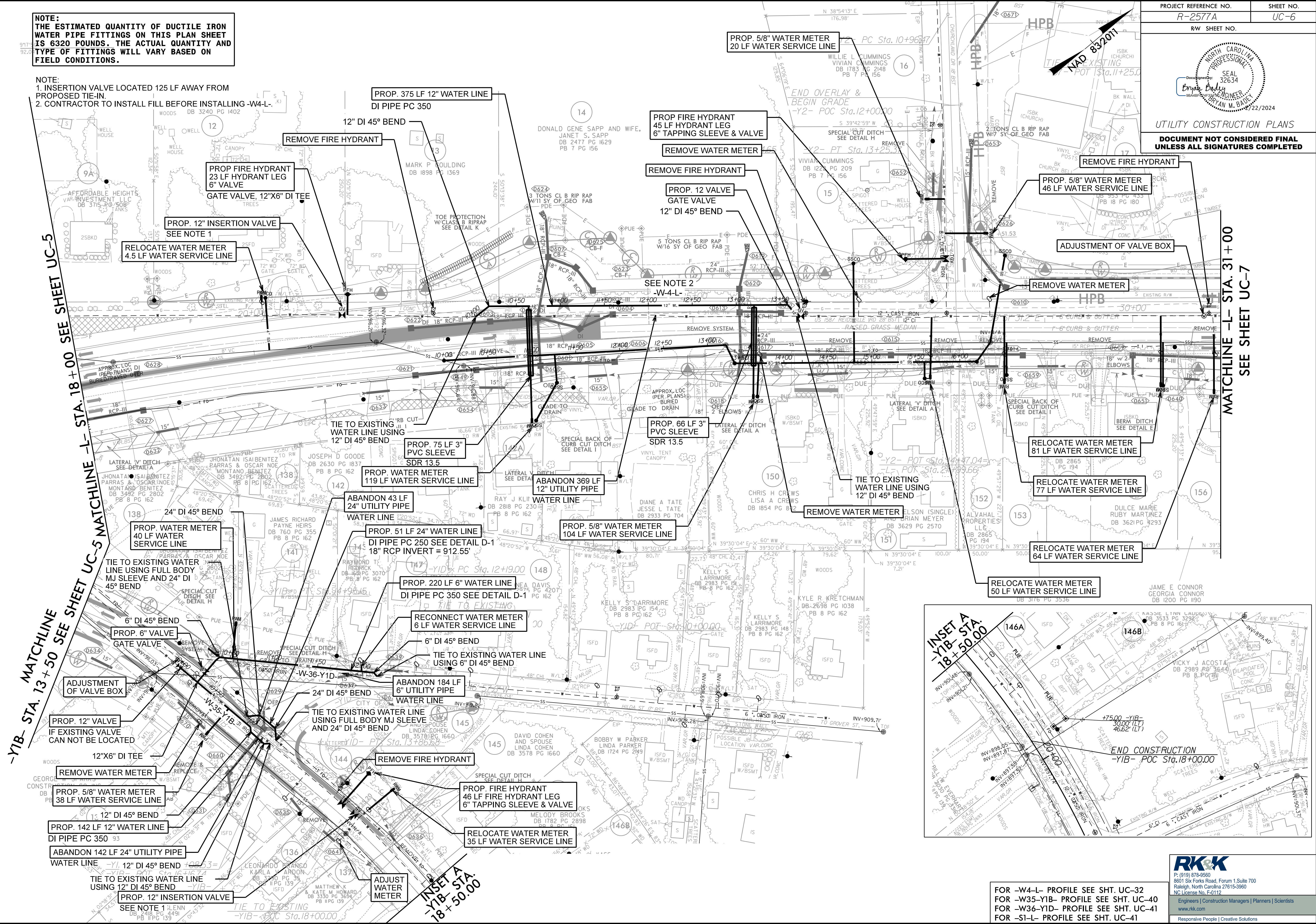


UTILITY CONSTRUCTION PLANS  
DOCUMENT NOT CONSIDERED FINAL  
UNLESS ALL SIGNATURES COMPLETED

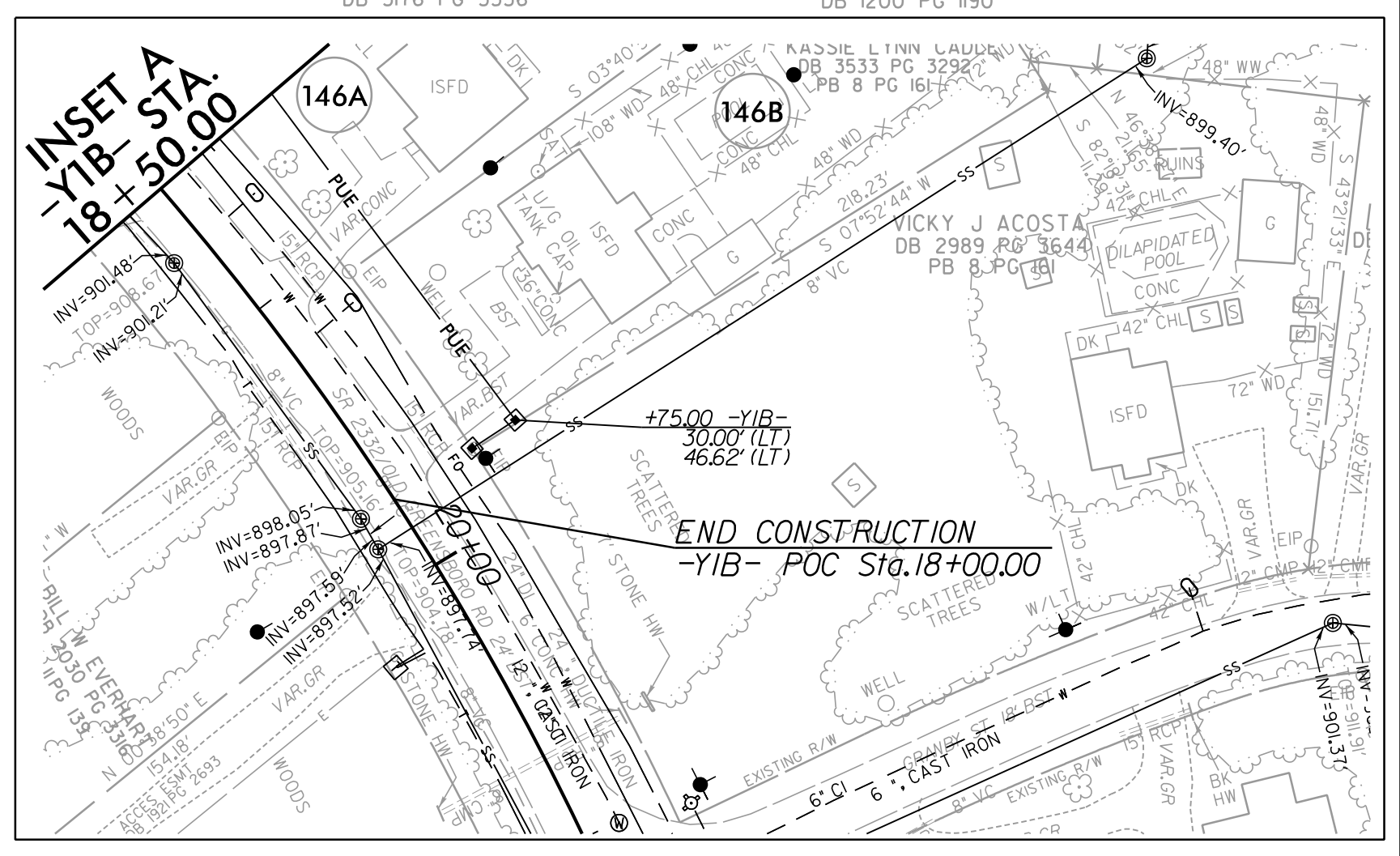
**NOTE:**  
THE ESTIMATED QUANTITY OF DUCTILE IRON WATER PIPE FITTINGS ON THIS PLAN SHEET IS 6320 POUNDS. THE ACTUAL QUANTITY AND TYPE OF FITTINGS WILL VARY BASED ON FIELD CONDITIONS.

**NOTE:**  
1. INSERTION VALVE LOCATED 125 LF AWAY FROM PROPOSED TIE-IN.  
2. CONTRACTOR TO INSTALL FILL BEFORE INSTALLING -W4-L-.



-YIB- STA. 13 + 50 SEE SHEET UC-5 MATCHLINE -L- STA. 18 + 00 SEE SHEET UC-5

MATCHLINE -L- STA. 31 + 00 SEE SHEET UC-7



FOR -W4-L- PROFILE SEE SHT. UC-32  
FOR -W35-YID- PROFILE SEE SHT. UC-40  
FOR -S1-L- PROFILE SEE SHT. UC-41