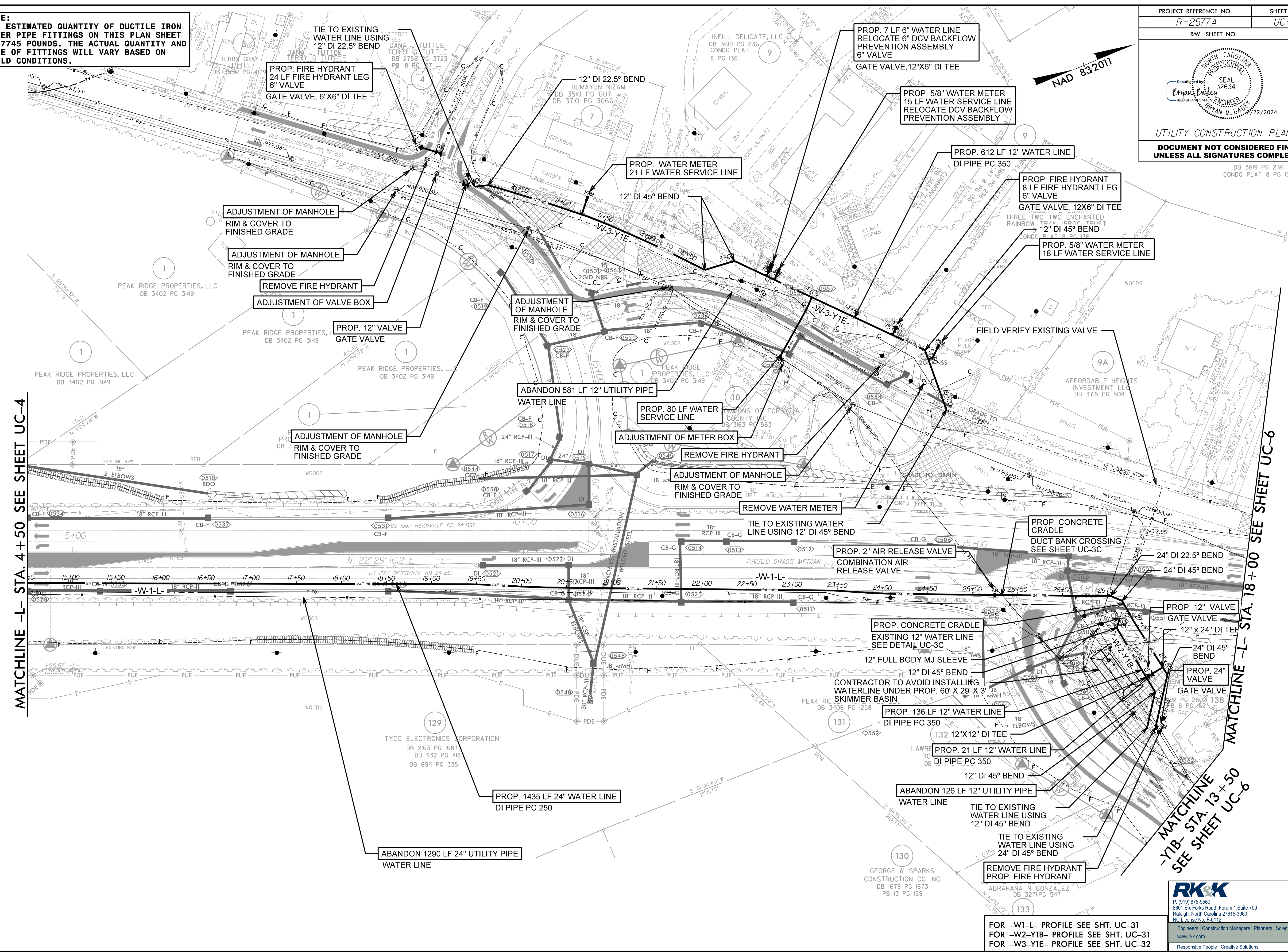


NOTE:
THE ESTIMATED QUANTITY OF DUCTILE IRON WATER PIPE FITTINGS ON THIS PLAN SHEET IS 7745 POUNDS. THE ACTUAL QUANTITY AND TYPE OF FITTINGS WILL VARY BASED ON FIELD CONDITIONS.



MATCHLINE -L- STA. 4+50 SEE SHEET UC-4

MATCHLINE -L- STA. 18+00 SEE SHEET UC-6

MATCHLINE -Y1B- STA. 13+50 SEE SHEET UC-6

FOR -W1-L- PROFILE SEE SHT. UC-31
 FOR -W2-Y1B- PROFILE SEE SHT. UC-31
 FOR -W3-Y1E- PROFILE SEE SHT. UC-32

8/17/2024
 R:\Projects\Engineering\UC\Proc\N-R-2577A_rdy\05_UC05_psh.dgn