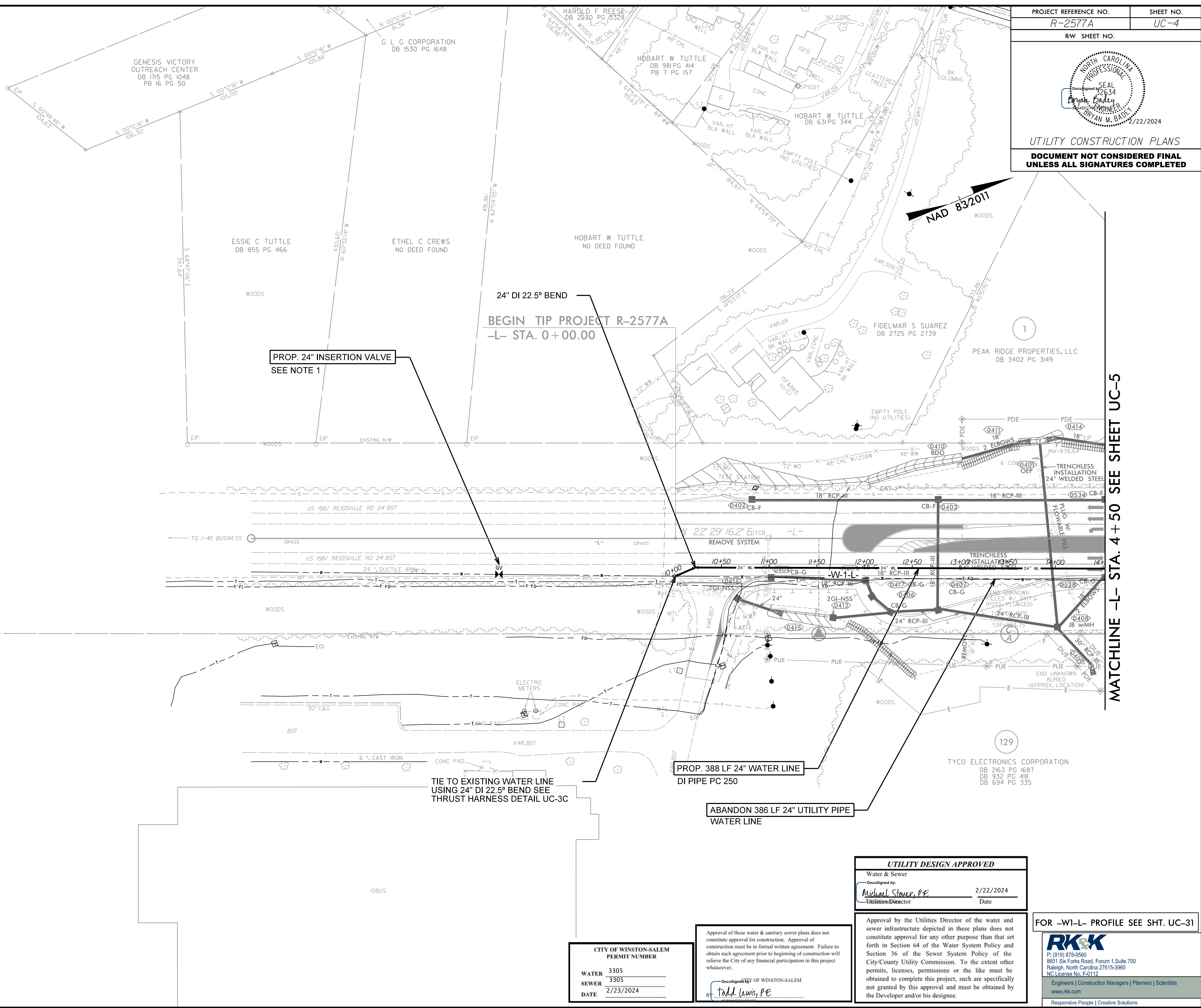


PROFESSIONAL SEAL  
 Documented by: *Bryan M. Bailey* 2/22/2024  
 BRYAN M. BAILEY  
 ENGINEER  
 2/22/2024  
 UTILITY CONSTRUCTION PLANS  
 DOCUMENT NOT CONSIDERED FINAL  
 UNLESS ALL SIGNATURES COMPLETED

**NOTE:**  
 THE ESTIMATED QUANTITY OF DUCTILE IRON  
 WATER PIPE FITTINGS ON THIS PLAN SHEET  
 IS 1530 POUNDS. THE ACTUAL QUANTITY AND  
 TYPE OF FITTINGS WILL VARY BASED ON  
 FIELD CONDITIONS.

**NOTE:**  
 1. INSERTION VALVE LOCATED 180 LF AWAY FROM  
 PROPOSED TIE-IN.



MATCHLINE -L- STA. 4 + 50 SEE SHEET UC-5

CITY OF WINSTON-SALEM PERMIT NUMBER	
WATER	3305
SEWER	3305
DATE	2/23/2024

Approval of these water & sanitary sewer plans does not constitute approval for construction. Approval of construction must be in formal written agreement. Failure to obtain such agreement prior to beginning of construction will relieve the City of any financial participation in this project whatsoever.

Documented by: *Todd Lewis, PE*  
 BY: *Todd Lewis, PE*

**UTILITY DESIGN APPROVED**  
 Water & Sewer  
 Documented by: *Michael Stover, PE* 2/22/2024  
 Utilities Director Date

Approval by the Utilities Director of the water and sewer infrastructure depicted in these plans does not constitute approval for any other purpose than that set forth in Section 64 of the Water System Policy and Section 36 of the Sewer System Policy of the City/County Utility Commission. To the extent other permits, licenses, permissions or the like must be obtained to complete this project, such are specifically not granted by this approval and must be obtained by the Developer and/or his designee.

FOR -W1-L- PROFILE SEE SHT. UC-31

**RK&K**  
 P: (919) 378-9550  
 8601 Six Forks Road, Forum 1, Suite 700  
 Raleigh, North Carolina 27615-3960  
 NC License No. F-0112  
 Engineers | Construction Managers | Planners | Scientists  
 www.rk.com  
 Responsive People | Creative Solutions

8/17/1999  
 R:\City Utilities\Engineering\UC\Proc\N-R-2577A-rdj\04\_UC04\_psh.dgn  
 2/22/2024  
 R:\City Utilities\Engineering\UC\Proc\N-R-2577A-rdj\04\_UC04\_psh.dgn