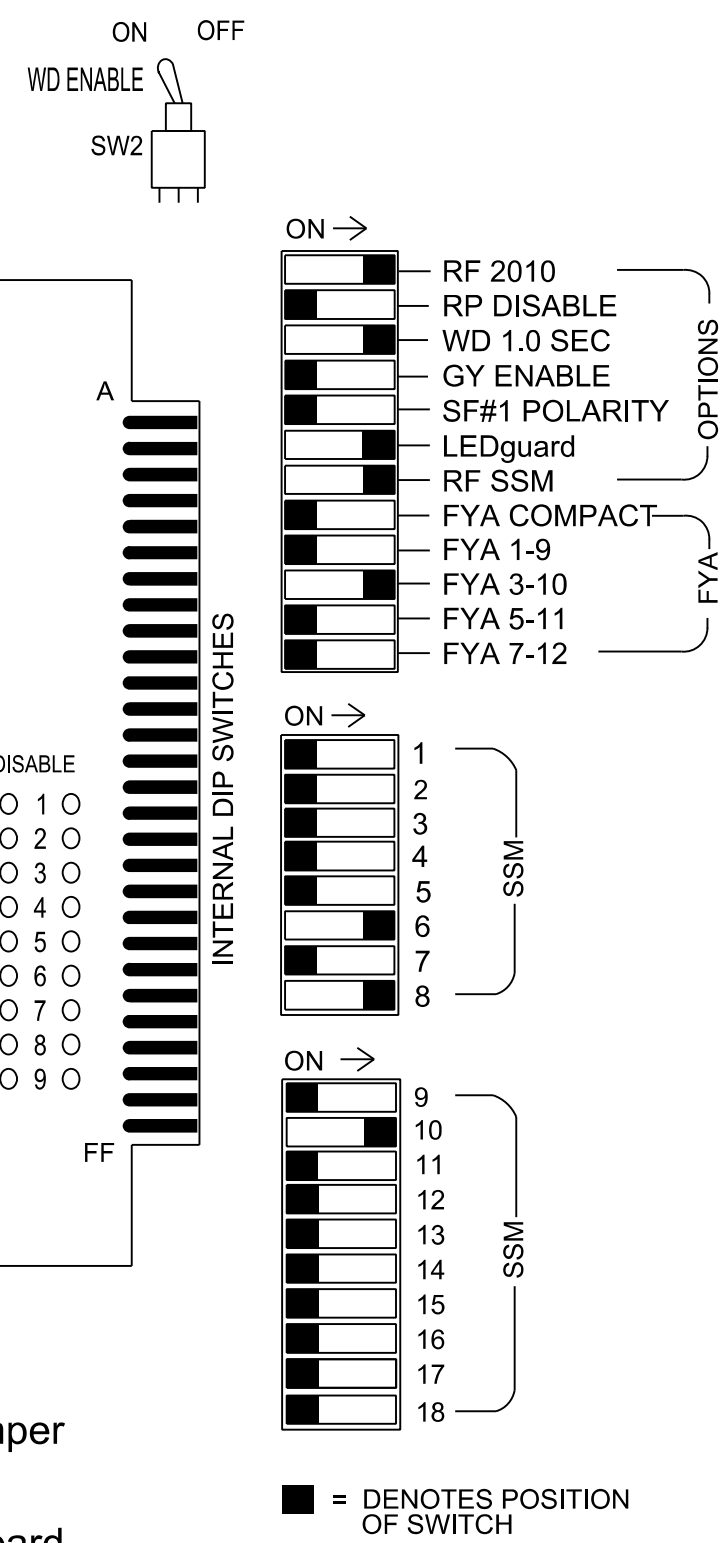
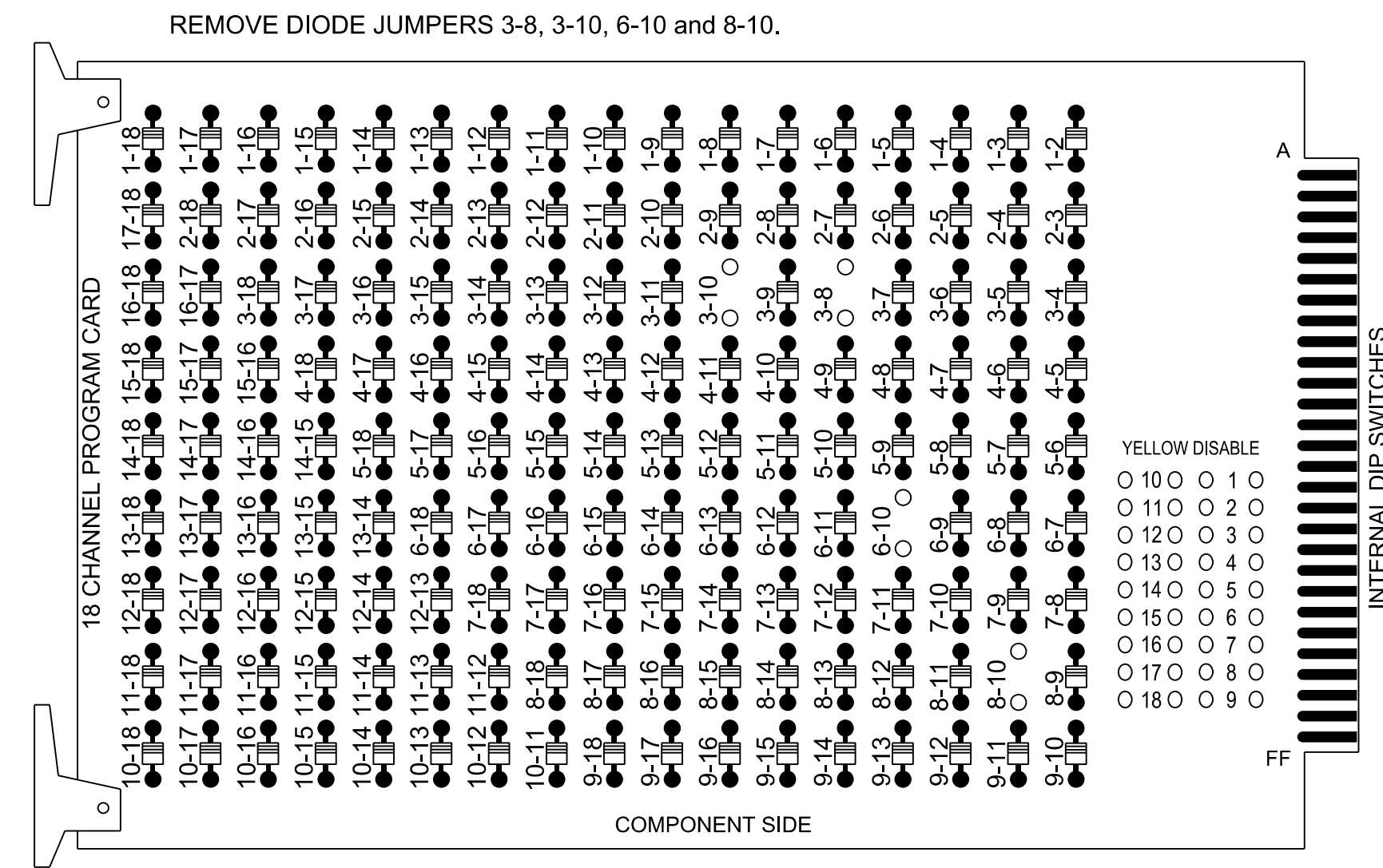


**18 CHANNEL IP CONFLICT MONITOR PROGRAMMING DETAIL**

(remove jumpers and set switches as shown)



- NOTES:**
- Card is provided with all diode jumpers in place. Removal of any jumper allows its channels to run concurrently.
  - Ensure jumpers SEL2-SEL5 and SEL9 are present on the monitor board.
  - Ensure that the Red Enable is active at all times during normal operation.
  - Connect serial cable from conflict monitor to comm. port 1 of 2070 controller. Ensure conflict monitor communicates with 2070.

**NOTES**

- To prevent "flash-conflict" problems, insert red flash program blocks for all unused vehicle load switches in the output file. The installer shall verify that signal heads flash in accordance with the signal plan.
- Program controller to start up in phase 6 Green No Walk.
- If this signal will be managed by an ATMS software, enable controller and detector logging for all detectors used at this location.

**EQUIPMENT INFORMATION**

Controller.....2070LX  
 Cabinet.....332 w/ Aux  
 Software.....Q-Free MAXTIME  
 Cabinet Mount.....Base  
 Output File Positions.....18 With Aux. Output File  
 Load Switches Used.....S4, S8, S11, AUX S2  
 Phases Used.....3, 6, 8  
 Overlap "1".....NOT USED  
 Overlap "2".....\*  
 Overlap "3".....NOT USED  
 Overlap "4".....NOT USED

\*See overlap programming detail on sheet 2.

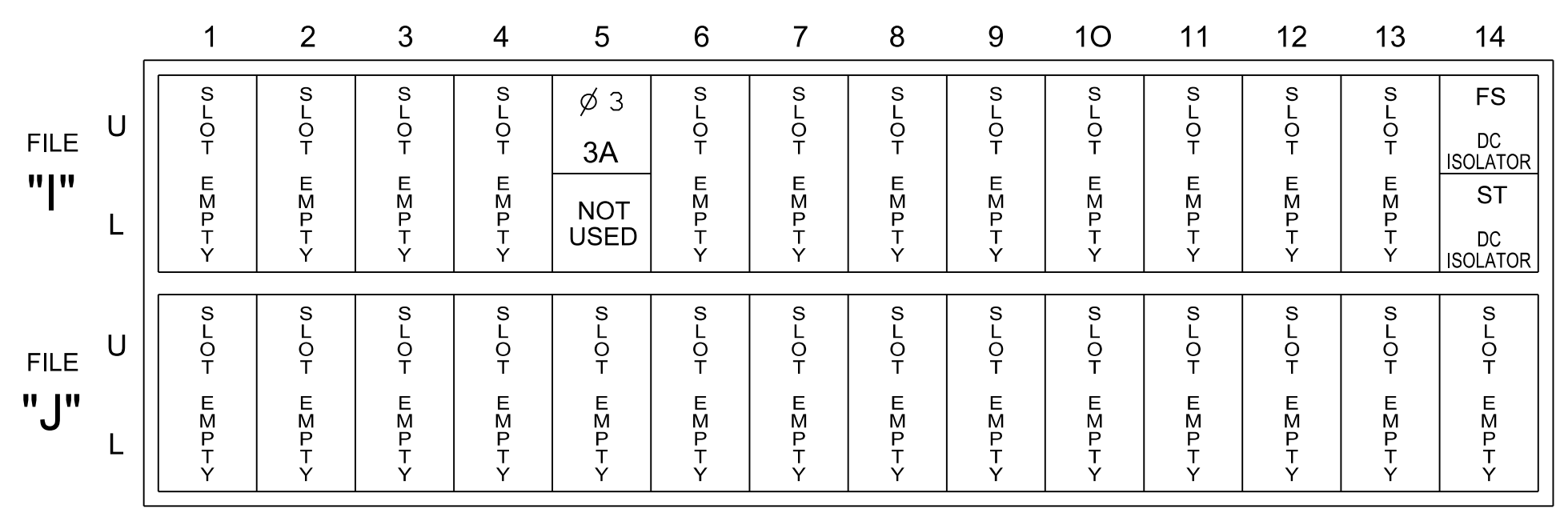
**SIGNAL HEAD HOOK-UP CHART**

LOAD SWITCH NO.	S1	S2	S3	S4	S5	S6	S7	S8	S9	S10	S11	S12	AUX S1	AUX S2	AUX S3	AUX S4	AUX S5	AUX S6
CMU CHANNEL NO.	1	2	13	3	4	14	5	6	15	7	8	16	9	10	17	11	12	18
PHASE	1	2	2 PED	3	4	4 PED	5	6	6 PED	7	8	8 PED	OL1	OL2	SPARE	OL3	OL4	SPARE
SIGNAL HEAD NO.	NU	NU	NU	31*	NU	NU	NU	61,62	NU	NU	81,82	NU	NU	31*	NU	NU	NU	NU
RED								134			107							
YELLOW				*				135										
GREEN																		
RED ARROW																A124		
YELLOW ARROW											108					A125		
FLASHING YELLOW ARROW																A126		
GREEN ARROW									118		136		109					

NU = Not Used  
 \* Denotes install load resistor. See load resistor installation detail this sheet.  
 \* See pictorial of head wiring in detail this sheet.

**INPUT FILE POSITION LAYOUT**

(front view)

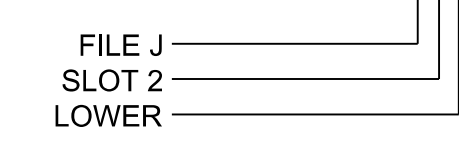


**INPUT FILE CONNECTION & PROGRAMMING CHART**

LOOP NO.	LOOP TERMINAL	INPUT FILE POS.	PIN NO.	INPUT POINT	DETECTOR NO.	CALL PHASE	DELAY TIME	EXTEND TIME	EXTEND	ADDED INITIAL	CALL	DELAY DURING GREEN
3A	TB4-5,6	I5U	58	20	7★	3	15		X		X	

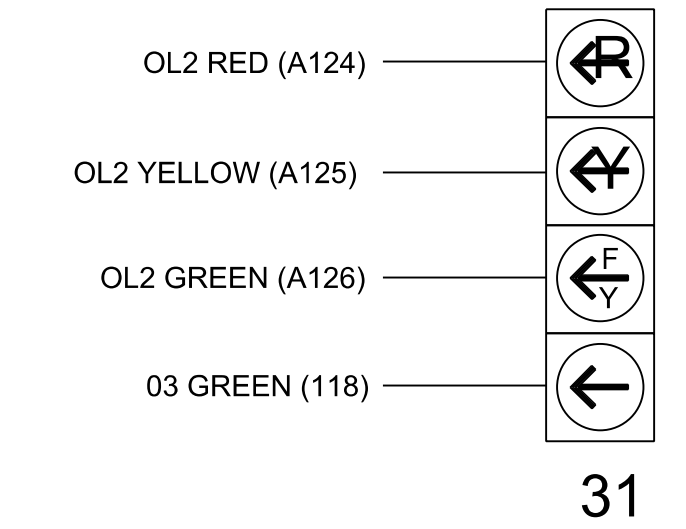
★ For the detector to work as shown on the signal design plan, see the vehicle detector setup programming detail for alternate phasing on sheet 2.

**INPUT FILE POSITION LEGEND: J2L**



**FYA SIGNAL WIRING DETAIL**

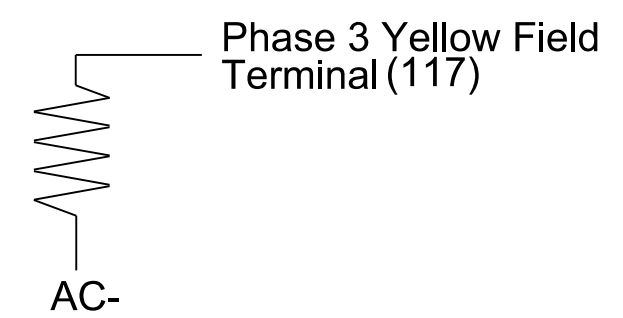
(wire signal heads as shown)



**LOAD RESISTOR INSTALLATION DETAIL**

(install resistors as shown)

ACCEPTABLE VALUES	
Value (ohms)	Wattage
1.5K - 1.9K	25W (min)
2.0K - 3.0K	10W (min)



**SPECIAL DETECTOR NOTE**

Install a video detection system for vehicle detection for zones 3A, 6A and 8A. Perform installation according to manufacturer's directions and NCDOT engineer -approved mounting locations to accomplish the detection schemes shown on the Signal Design Plans.

For Detection Zone 3A, the equipment placement and slots are typical for a NCDOT installation. Inputs associated with these slots are compatible with time of day instructions located on sheet 2 of this electrical detail.

New Installation - Temporary Design  
 (TMP Phase III Step 5) Electrical Detail - Sheet 1 of 2

Electrical and Programming Details For:

Prepared for the Offices of:

**RK&K**  
 P: (919) 878-9550  
 8801 Six Forks Road Suite 700 | Raleigh, North Carolina 27615-2965  
 NC License No. F-0112  
 Engineers | Construction Managers | Planners | Scientists  
 www.rk.com  
 Responsive People | Creative Solutions

US 158 WB (Reidsville Rd.)  
 at  
 SR 2385 (Darrow Road)

Division 9 Forsyth County Walkertown  
 PLAN DATE: February 2024 REVIEWED BY: DT Sears  
 PREPARED BY: WP Erickson-Jones REVIEWED BY:

REVISIONS: INIT. DATE

Seal: Porter Jones, Professional Engineer, No. 056142, State of North Carolina. Date: 2/12/2024.

DOCUMENT NOT CONSIDERED FINAL UNLESS ALL SIGNATURES COMPLETED

SIG. INVENTORY NO. 09-0984T