

MAXTIME OVERLAP PROGRAMMING DETAIL FOR DEFAULT PHASING

Front Panel
Main Menu >Controller >Overlap >Overlap Parameters/Overlap Timings

Web Interface
Home >Controller >Overlap Configuration >Overlaps

Overlap Plan 1

Overlap	1	2
Type	FYA 4 - Section	Normal
Included Phases	2	1,8
Modifier Phases	1	-
Modifier Overlaps	-	-
Trail Green	0	0
Trail Yellow	0.0	0.0
Trail Red	0.0	0.0

MAXTIME ALTERNATE PHASING ACTIVATION DETAIL

To run alternate phasing, select a Pattern that is programmed to run Overlap Plan 2 and Detector Plan 2. A Pattern can be selected through the scheduler or manually by changing the Operational Mode.

PHASING	OVERLAP PLAN	VEH DET PLAN
ACTIVE PLAN REQUIRED TO RUN DEFAULT PHASING	1	1
ACTIVE PLAN REQUIRED TO RUN ALTERNATE PHASING	2	2

ALTERNATE PHASING CHANGE SUMMARY

THE FOLLOWING IS A SUMMARY OF WHAT TAKES PLACE WHEN OVERLAP PLAN 2 AND VEHICLE DETECTOR PLAN 2 ACTIVATE TO CALL THE "ALTERNATE PHASING":

OVERLAP PLAN 2: Modifies overlap included phases for head 11 to run protected turns only.

VEH DET PLAN 2: Disables phase 6 call on loop 1A and reduces delay time for phase 1 call on loop 1A to 0 seconds.

MAXTIME OVERLAP PROGRAMMING DETAIL FOR ALTERNATE PHASING

Front Panel
Main Menu >Controller >Overlap >Overlap Parameters/Overlap Timings

Web Interface
Home >Controller >Overlap Configuration >Overlaps

In the table view of the web interface, right click on "Overlap" in the top left corner of the table. Copy the entire contents of Overlap Plan 1. Paste Overlap Plan 1 into Overlap Plan 2. Modify Overlap Plan 2 as shown below and save changes.

Overlap Plan 2

Overlap	1	2
Type	FYA 4 - Section	Normal
Included Phases	-	1,8
Modifier Phases	1	-
Modifier Overlaps	-	-
Trail Green	0	0
Trail Yellow	0.0	0.0
Trail Red	0.0	0.0

← NOTICE INCLUDED PHASE

MAXTIME DETECTOR PROGRAMMING DETAIL FOR ALTERNATE PHASING LOOP 1A

Front Panel
Main Menu >Controller >Detector >Veh Det Plans

Web Interface
Home >Controller >Detector Configuration >Vehicle Detectors

In the table view of web interface right click on "Detector" in the top left corner of the table. Copy the entire contents of Detector Plan 1. Paste Detector Plan 1 into Detector Plan 2. Modify Detector Plan 2 as shown below and save changes.

1A

Plan 2	Detector	Call Phase	Delay
	1	1	0
	29	0	3

MAXTIME ALTERNATE PHASING PATTERN PROGRAMMING DETAIL

Front Panel
Main Menu >Controller >Coordination >Patterns

Web Interface
Home >Controller >Coordination >Patterns

Pattern	Veh Det Plan	Overlap Plan
*	2	2

* The Pattern number(s) are to be determined by the Division and/or City Traffic Engineer.

FLASHER CIRCUIT MODIFICATION DETAIL

IN ORDER TO INSURE THAT SIGNALS FLASH CONCURRENTLY ON THE SAME APPROACH, MAKE THE FOLLOWING FLASHER CIRCUIT CHANGES:

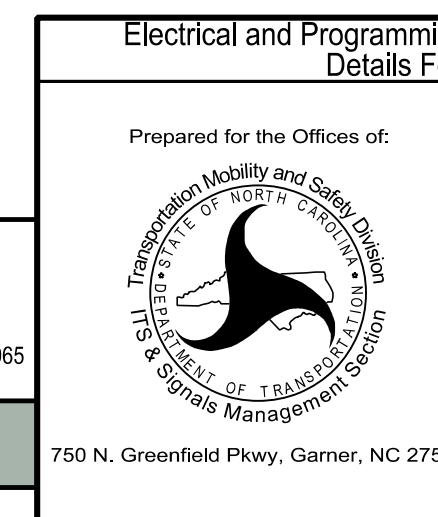
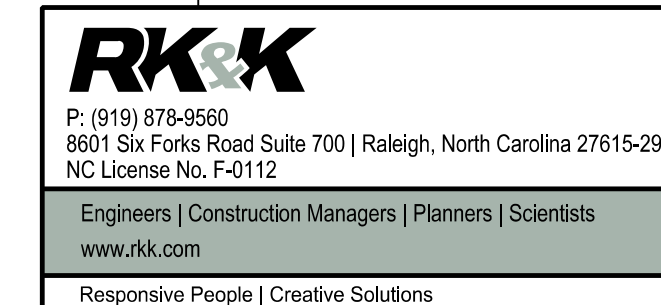
- ON REAR OF PDA - REMOVE WIRE FROM TERM. T2-4 AND TERMINATE ON T2-2.
- ON REAR OF PDA - REMOVE WIRE FROM TERM. T2-5 AND TERMINATE ON T2-3.
- REMOVE FLASHER UNIT 2.

THE CHANGES LISTED ABOVE TIES ALL PHASES AND OVERLAPS TO FLASHER UNIT 1.

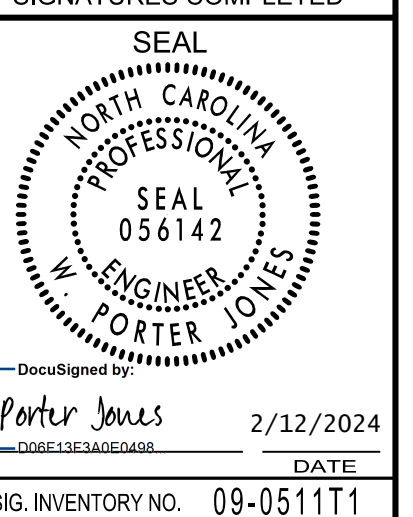
THIS ELECTRICAL DETAIL IS FOR
THE SIGNAL DESIGN: 09-0511T1
DESIGNED: February 2024
SEALED: February 12, 2024
REVISED:

Signal Upgrade - Temporary Design 1
(TMP Phase 1 Step 2) Electrical Detail- Sheet 2 of 2

DOCUMENT NOT CONSIDERED
FINAL UNLESS ALL
SIGNATURES COMPLETED



Electrical and Programming Details For:		US 158 (Reidsville Rd.) at NC 74 Westbound Ramps	
Prepared for the Offices of:	Division 9	Forsyth County	Winston-Salem
PLAN DATE: February 2024	REVIEWED BY: DT Sears	PREPARED BY: WP Erickson-Jones	REVIEWED BY:
REVISIONS			
	INIT.	DATE	



SIG. INVENTORY NO. 09-0511T1