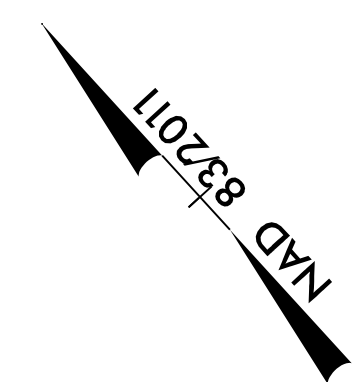
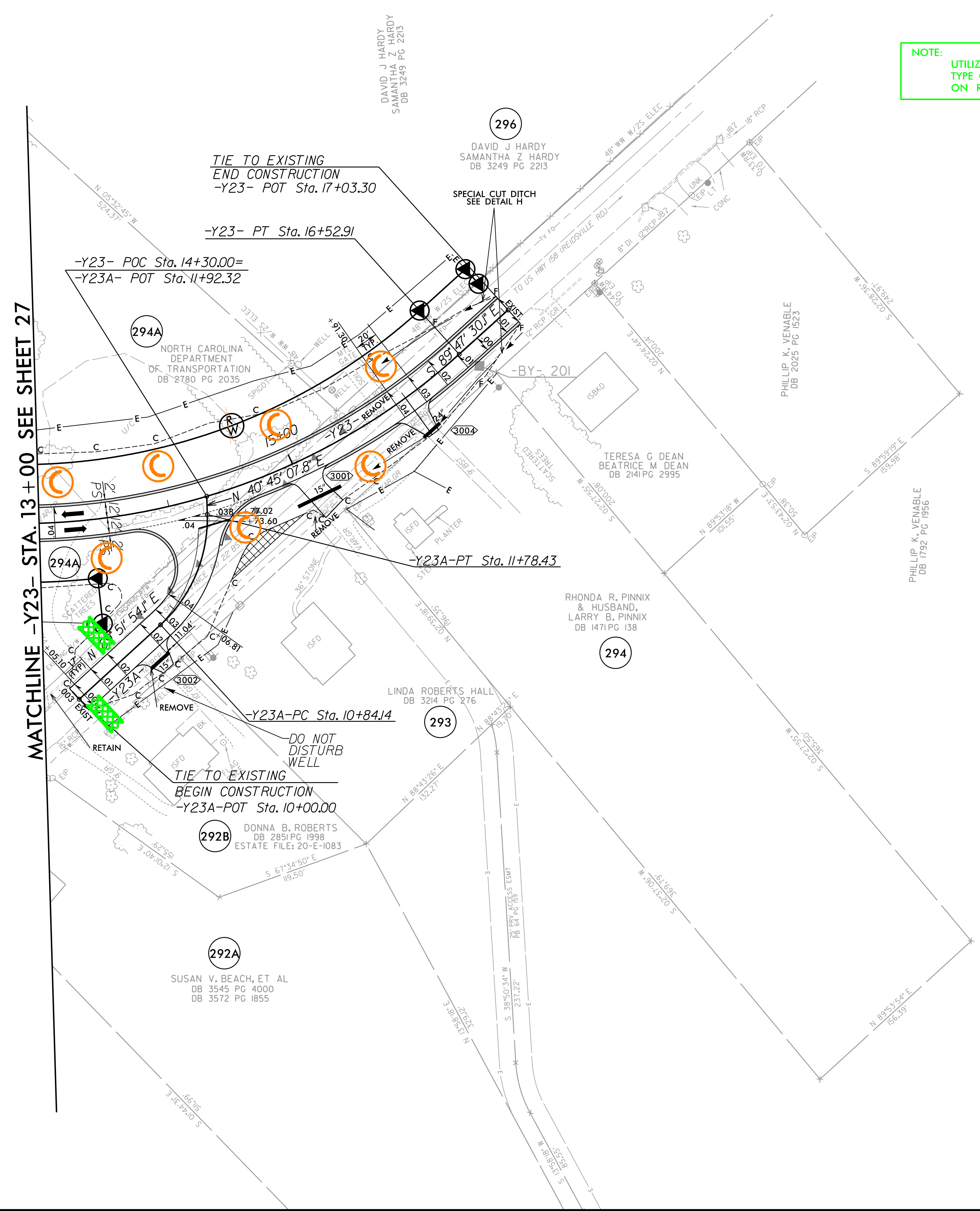


PROJECT REFERENCE NO. R-2577A	SHEET NO. FC-57/CONST.30
RW SHEET NO.	
ROADWAY DESIGN ENGINEER	HYDRAULICS ENGINEER



NOTE: UTILIZE FABRIC INSERT INLET PROTECTION IN LIEU OF TYPE C INLET PROTECTION WHERE WATER MIGHT POND ON ROADWAY USED BY PUBLIC TRAFFIC.



REMOVAL OF EXISTING PAVEMENT

RK&K
 P: (919) 378-9550
 8601 Six Forks Road, Forum 1, Suite 700
 Raleigh, North Carolina 27615-3960
 NC License No. F-0112
 Engineers | Construction Managers | Planners | Scientists
 www.rk.com
 Responsive People | Creative Solutions

8/17/99
 I:\16-2023\Projects\Roadway\EROSIONCONTROL\R-2577A-EC-ps57_Final.dgn
 R:\16-2023\Projects\Roadway\EROSIONCONTROL\R-2577A-EC-ps57_Final.dgn