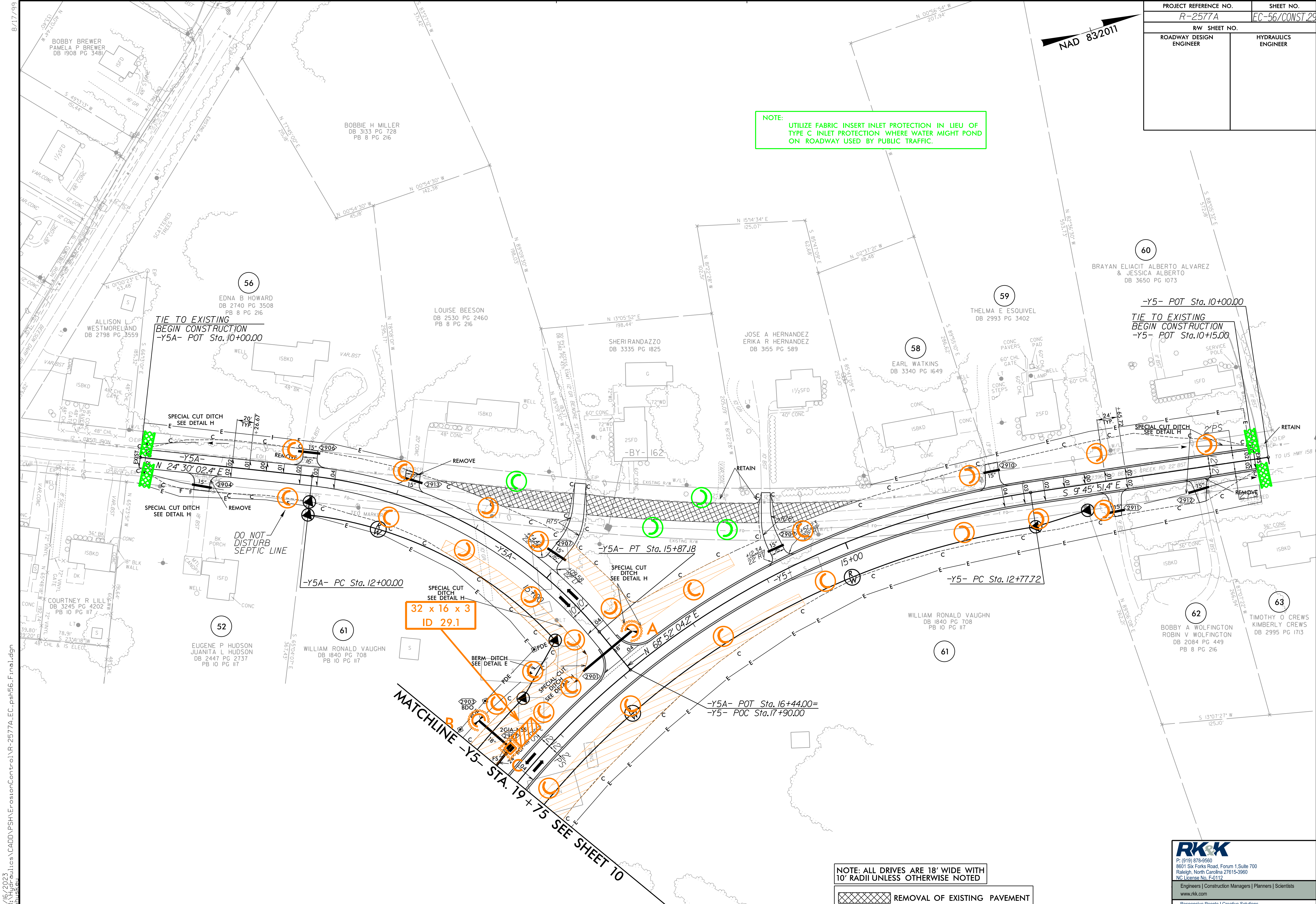


PROJECT REFERENCE NO. R-2577A	SHEET NO. FC-56/CONST.29
RW SHEET NO.	HYDRAULICS ENGINEER
ROADWAY DESIGN ENGINEER	

NAD 832011

NOTE: UTILIZE FABRIC INSERT INLET PROTECTION IN LIEU OF TYPE C INLET PROTECTION WHERE WATER MIGHT POND ON ROADWAY USED BY PUBLIC TRAFFIC.



NOTE: ALL DRIVES ARE 18' WIDE WITH 10' RADII UNLESS OTHERWISE NOTED

REMOVAL OF EXISTING PAVEMENT

8/17/199
R:\16_2023\Projects\Roadway\FC-56\Const\Control\N-2577A-EC-psh56-F.mol.dgn

RK&K
 P: (919) 378-9550
 8601 Six Forks Road, Forum 1, Suite 700
 Raleigh, North Carolina 27615-3960
 NC License No. F-0112
 Engineers | Construction Managers | Planners | Scientists
 www.rk.com
 Responsive People | Creative Solutions