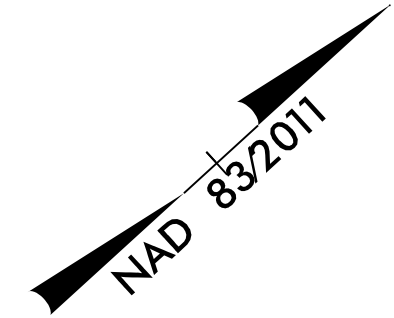
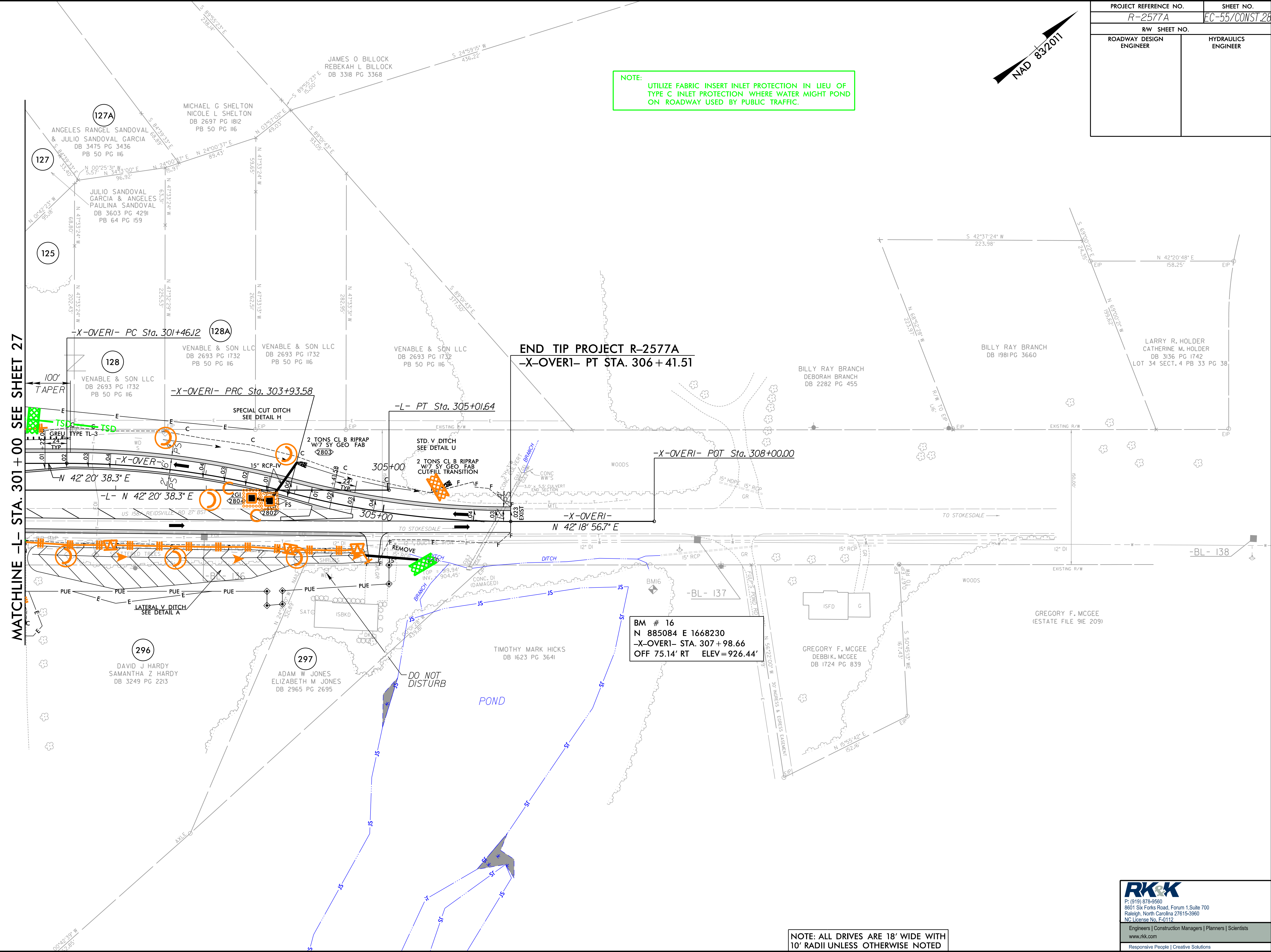


PROJECT REFERENCE NO. R-2577A	SHEET NO. EC-55/CONST.28
RW SHEET NO.	HYDRAULICS ENGINEER
ROADWAY DESIGN ENGINEER	



NOTE: UTILIZE FABRIC INSERT INLET PROTECTION IN LIEU OF TYPE C INLET PROTECTION WHERE WATER MIGHT POND ON ROADWAY USED BY PUBLIC TRAFFIC.



MATCHLINE -L- STA. 301 + 00 SEE SHEET 27

END TIP PROJECT R-2577A
-X-OVER- PT STA. 306 + 41.51

BM # 16
N 885084 E 1668230
-X-OVER- STA. 307 + 98.66
OFF 75.14' RT ELEV = 926.44'

NOTE: ALL DRIVES ARE 18' WIDE WITH 10' RADII UNLESS OTHERWISE NOTED

8/17/199
R:\Projects\2023\Projects\CADD\PSH\ERosionControl\N-2577A_EC_psh55.Final.dgn
8/16/2023
R.K.

RK&K
P: (919) 378-9550
8601 Six Forks Road, Forum 1, Suite 700
Raleigh, North Carolina 27615-3960
NC License No. F-0112
Engineers | Construction Managers | Planners | Scientists
www.rk.com
Responsive People | Creative Solutions