

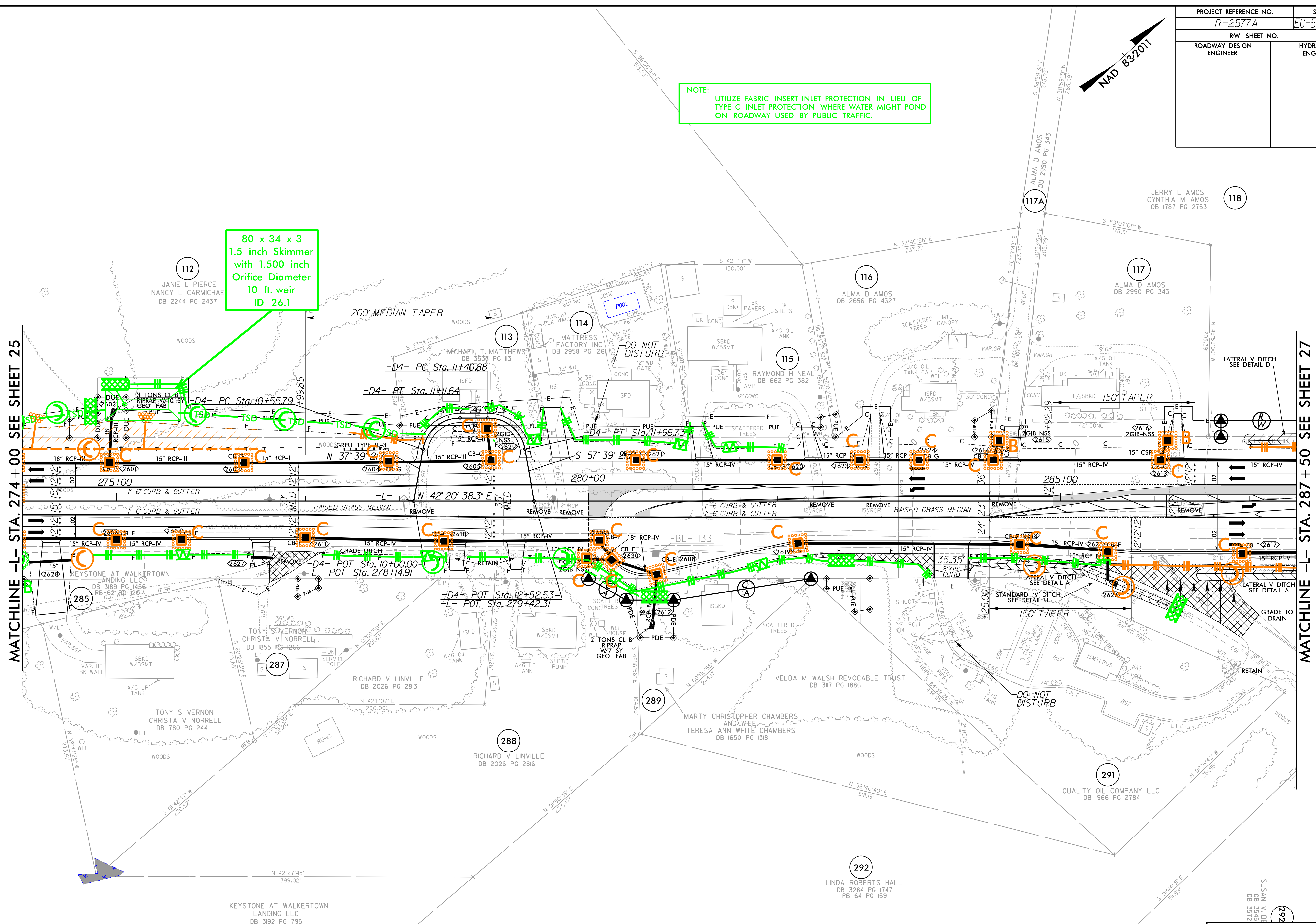
PROJECT REFERENCE NO. R-2577A	SHEET NO. EC-53/CONST.26
RW SHEET NO. ROADWAY DESIGN ENGINEER	HYDRAULICS ENGINEER

NOTE:
UTILIZE FABRIC INSERT INLET PROTECTION IN LIEU OF TYPE C INLET PROTECTION WHERE WATER MIGHT POND ON ROADWAY USED BY PUBLIC TRAFFIC.

80 x 34 x 3
1.5 inch Skimmer
with 1.500 inch
Orifice Diameter
10 ft. weir
ID 26.1

MATCHLINE -L- STA. 274 + 00 SEE SHEET 25

MATCHLINE -L- STA. 287 + 50 SEE SHEET 27



NOTE: ALL DRIVES ARE 18' WIDE WITH 10' RADII UNLESS OTHERWISE NOTED

REMOVAL OF EXISTING PAVEMENT

BM # 15
N 883107 E 1666974
-L- STA. 284 + 85.96 OFF 512.40 RT
ELEV = 932.74'

RK&K
P: (919) 378-9500
8601 Six Forks Road, Forum 1, Suite 700
Raleigh, North Carolina 27615-3960
NC License No. F-0112
Engineers | Construction Managers | Planners | Scientists
www.rk.com
Responsive People | Creative Solutions

8/17/99

I:\16-2023\Projects\Hydraulics\EC-53\Const\EC-53-Const.dgn