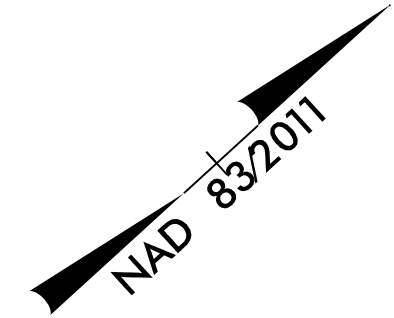


PROJECT REFERENCE NO. R-2577A	SHEET NO. EC-52/CONST.25
RW SHEET NO.	
ROADWAY DESIGN ENGINEER	HYDRAULICS ENGINEER



NOTE:  
UTILIZE FABRIC INSERT INLET PROTECTION IN LIEU OF TYPE C INLET PROTECTION WHERE WATER MIGHT POND ON ROADWAY USED BY PUBLIC TRAFFIC.

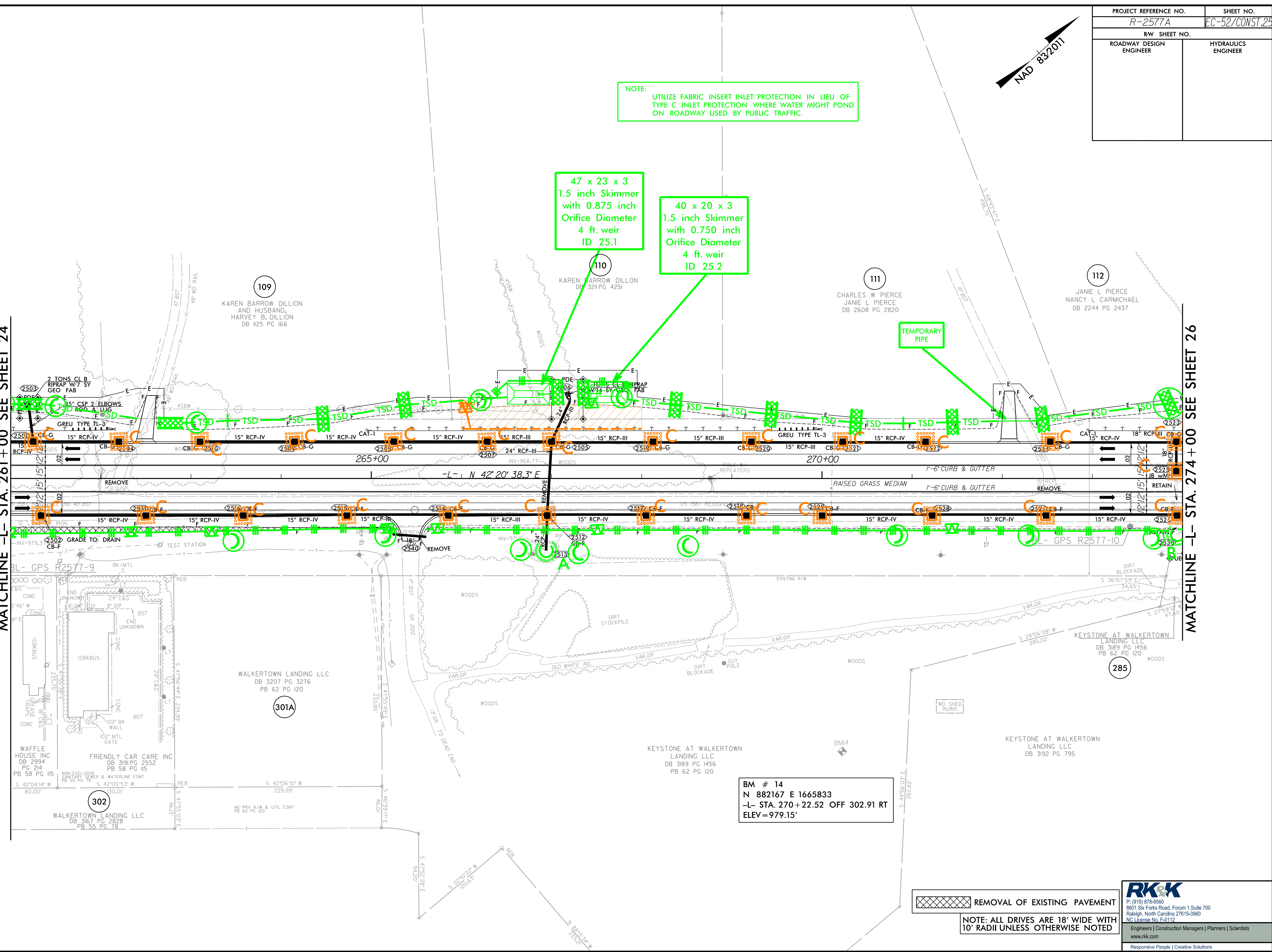
47 x 23 x 3  
1.5 inch Skimmer  
with 0.875 inch  
Orifice Diameter  
4 ft. weir  
ID 25.1

40 x 20 x 3  
1.5 inch Skimmer  
with 0.750 inch  
Orifice Diameter  
4 ft. weir  
ID 25.2

TEMPORARY  
PIPE

MATCHLINE -L- STA. 261+00 SEE SHEET 24

MATCHLINE -L- STA. 274+00 SEE SHEET 26



BM # 14  
N 882167 E 1665833  
-L- STA. 270+22.52 OFF 302.91 RT  
ELEV = 979.15'

REMOVAL OF EXISTING PAVEMENT

NOTE: ALL DRIVES ARE 18' WIDE WITH 10' RADII UNLESS OTHERWISE NOTED

**RKK**  
P: (919) 378-9550  
8601 Six Forks Road, Forum 1, Suite 700  
Raleigh, North Carolina 27615-3960  
NC License No. F-0112  
Engineers | Construction Managers | Planners | Scientists  
www.rkk.com  
Responsive People | Creative Solutions

8/17/99

K:\GIS\2023\Projects\Roads\2577A\EC-52\psh52.F.mxl.dgn  
1/16/2023 10:51:04 AM