

PROJECT REFERENCE NO. R-2577A	SHEET NO. EC-50/CONST.23
RW SHEET NO. ROADWAY DESIGN ENGINEER	HYDRAULICS ENGINEER

8/17/99

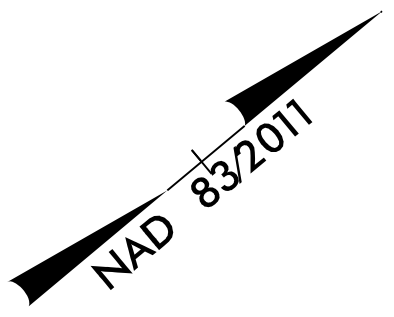
K:\16-2023\16-2023-Hydraulics\CAD\DWG\SH\EC-Const\Control\N-2577A-EC-ps-h50-F.mxd.dgn

NOTE: UTILIZE FABRIC INSERT INLET PROTECTION IN LIEU OF TYPE C INLET PROTECTION WHERE WATER MIGHT POND ON ROADWAY USED BY PUBLIC TRAFFIC.

PARCELS WITH U-5824 TIP NUMBER (84) WAS ACQUIRED UNDER THAT PROJECT; NO CLAIM ON R-2577A. EASEMENTS THAT ARE SHOWN BUT NOT FLAGGED WERE PURCHASED UNDER U-5824.

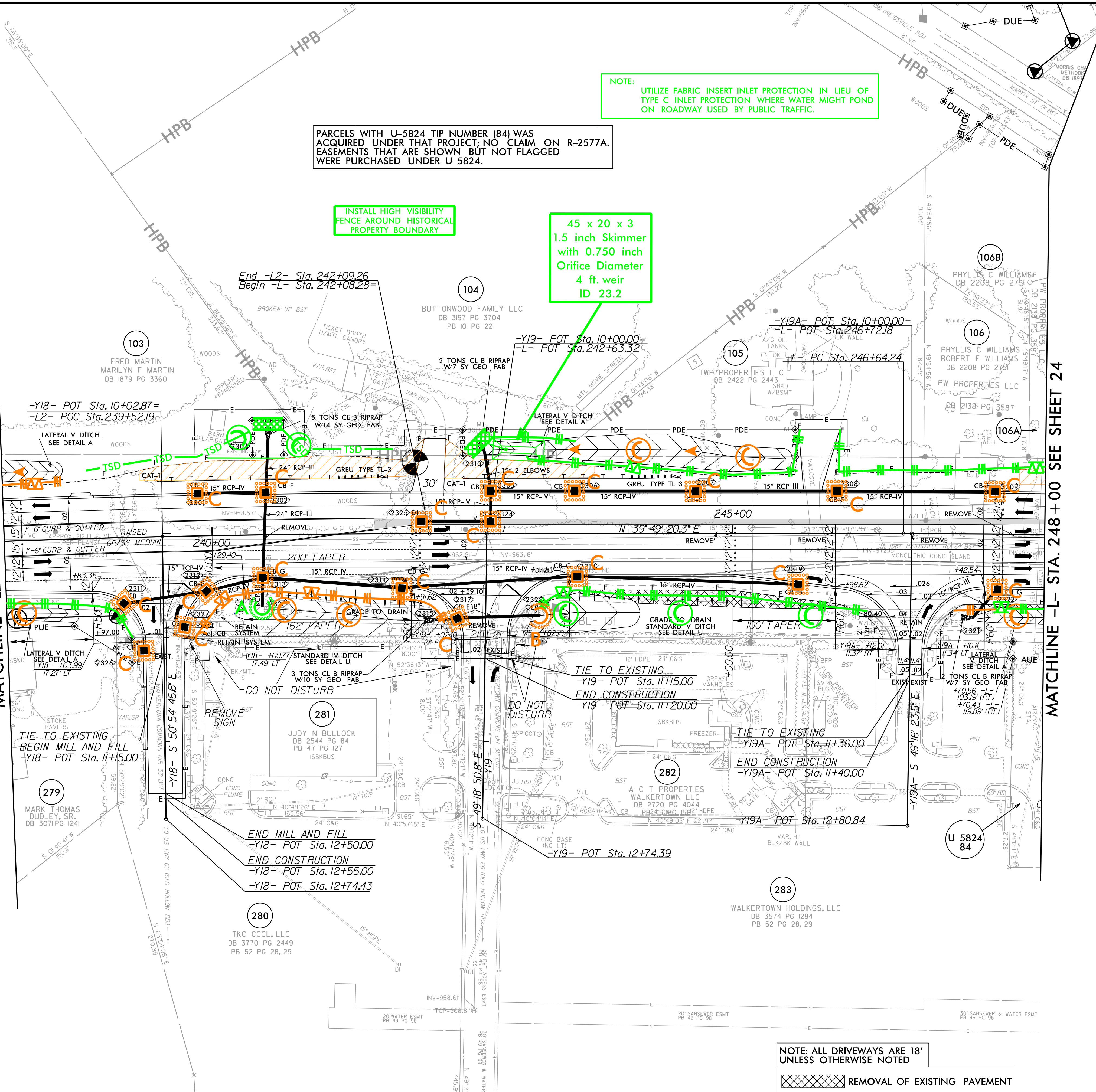
INSTALL HIGH VISIBILITY FENCE AROUND HISTORICAL PROPERTY BOUNDARY

45 x 20 x 3
1.5 inch Skimmer
with 0.750 inch
Orifice Diameter
4 ft. weir
ID 23.2



MATCHLINE -L2- STA. 238 + 00 SEE SHEET 22

MATCHLINE -L- STA. 248 + 00 SEE SHEET 24



-Y18- POT Sta. 10+02.87=
-L2- POC Sta. 239+52.19

End -L2- Sta. 242+09.26
Begin -L- Sta. 242+08.28

-Y19- POT Sta. 10+00.00=
-L- POT Sta. 242+63.32

-Y19A- POT Sta. 10+00.00=
-L- POT Sta. 246+72.18

-L- PC Sta. 246+64.24

TIE TO EXISTING
BEGIN MILL AND FILL
-Y18- POT Sta. 11+15.00

END MILL AND FILL
-Y18- POT Sta. 12+50.00

END CONSTRUCTION
-Y18- POT Sta. 12+55.00

-Y18- POT Sta. 12+74.43

TIE TO EXISTING
-Y19- POT Sta. 11+15.00

END CONSTRUCTION
-Y19- POT Sta. 11+20.00

-Y19- POT Sta. 12+74.39

TIE TO EXISTING
-Y19A- POT Sta. 11+36.00

END CONSTRUCTION
-Y19A- POT Sta. 11+40.00

-Y19A- POT Sta. 12+80.84

NOTE: ALL DRIVEWAYS ARE 18' UNLESS OTHERWISE NOTED

REMOVAL OF EXISTING PAVEMENT

RK&K
P: (919) 378-9550
8601 Six Forks Road, Forum 1, Suite 700
Raleigh, North Carolina 27615-3960
NC License No. F-0112
Engineers | Construction Managers | Planners | Scientists
www.rk.com
Responsive People | Creative Solutions