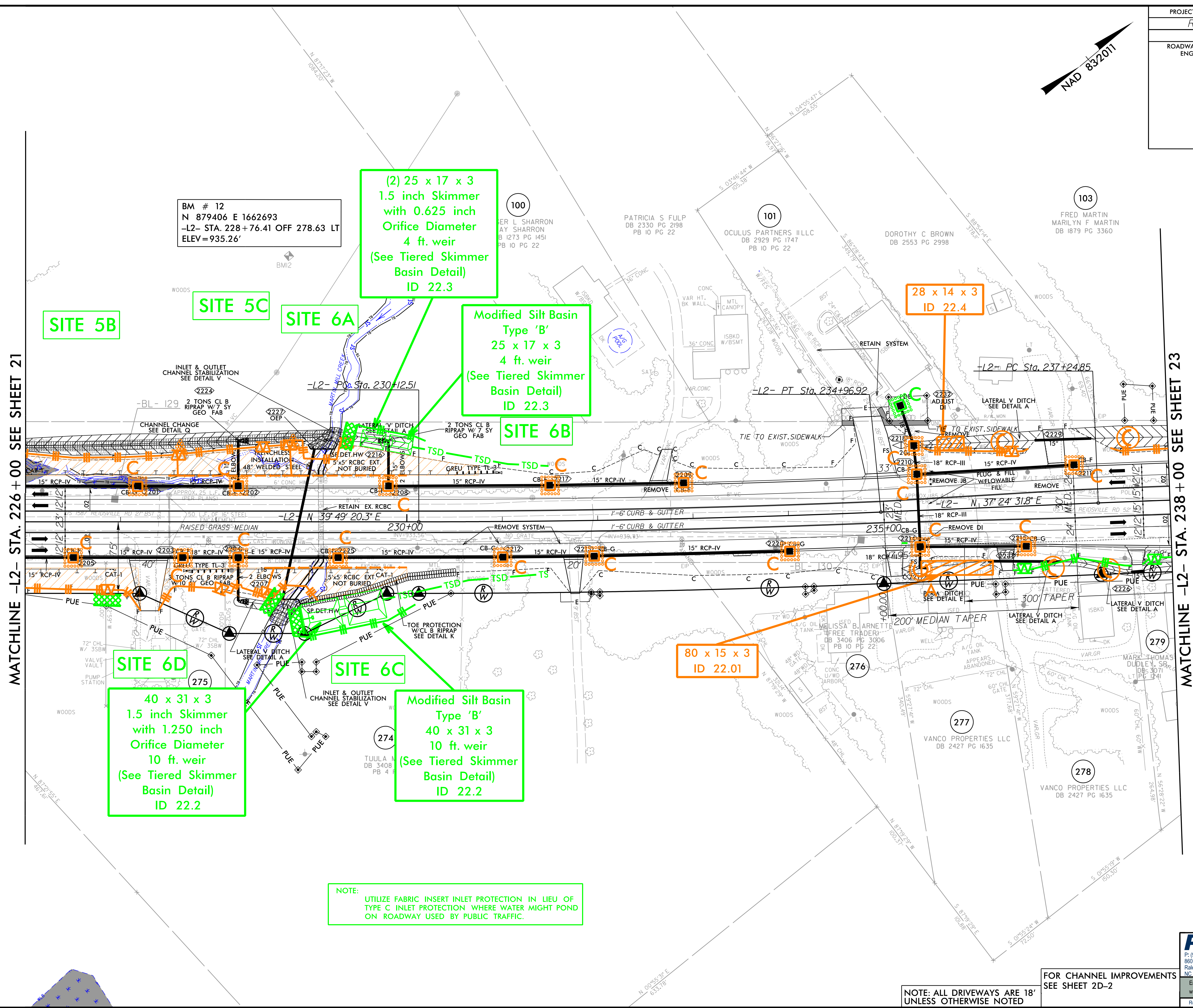


PROJECT REFERENCE NO. R-2577A	SHEET NO. EC-49/CONST.22
RW SHEET NO.	HYDRAULICS ENGINEER
ROADWAY DESIGN ENGINEER	



BM # 12
N 879406 E 1662693
-L2- STA. 228 + 76.41 OFF 278.63 LT
ELEV = 935.26'

SITE 5B

SITE 5C

SITE 6A

Modified Silt Basin
Type 'B'
25 x 17 x 3
4 ft. weir
(See Tiered Skimmer
Basin Detail)
ID 22.3

SITE 6B

28 x 14 x 3
ID 22.4

SITE 6D

40 x 31 x 3
1.5 inch Skimmer
with 1.250 inch
Orifice Diameter
10 ft. weir
(See Tiered Skimmer
Basin Detail)
ID 22.2

SITE 6C

Modified Silt Basin
Type 'B'
40 x 31 x 3
10 ft. weir
(See Tiered Skimmer
Basin Detail)
ID 22.2

80 x 15 x 3
ID 22.01

NOTE:
UTILIZE FABRIC INSERT INLET PROTECTION IN LIEU OF
TYPE C INLET PROTECTION WHERE WATER MIGHT POND
ON ROADWAY USED BY PUBLIC TRAFFIC.

NOTE: ALL DRIVEWAYS ARE 18'
UNLESS OTHERWISE NOTED

FOR CHANNEL IMPROVEMENTS
SEE SHEET 2D-2

RK&K
P: (919) 378-9550
8601 Six Forks Road, Forum 1, Suite 700
Raleigh, North Carolina 27615-3960
NC License No. F-0112
Engineers | Construction Managers | Planners | Scientists
www.rk.com
Responsive People | Creative Solutions

8/17/19

I:\16-2023
R\16-2023\Projects\EC-49\Const\Control\N-R-2577A-EC-psk49_F.mxd.dgn