

PROJECT REFERENCE NO. R-2577A	SHEET NO. EC-48/CONST.2
RW SHEET NO.	HYDRAULICS ENGINEER
ROADWAY DESIGN ENGINEER	



NOTE:
UTILIZE FABRIC INSERT INLET PROTECTION IN LIEU OF TYPE C INLET PROTECTION WHERE WATER MIGHT POND ON ROADWAY USED BY PUBLIC TRAFFIC.

(2) 25 x 17 x 3
1.5 inch Skimmer
with 0.625 inch
Orifice Diameter
4 ft. weir
(See Tiered Skimmer
Basin Detail)
ID 21.2

SITE 5A

Modified Silt Basin
Type 'B'
25 x 17 x 3
4 ft. weir
(See Tiered Skimmer
Basin Detail)
ID 21.2

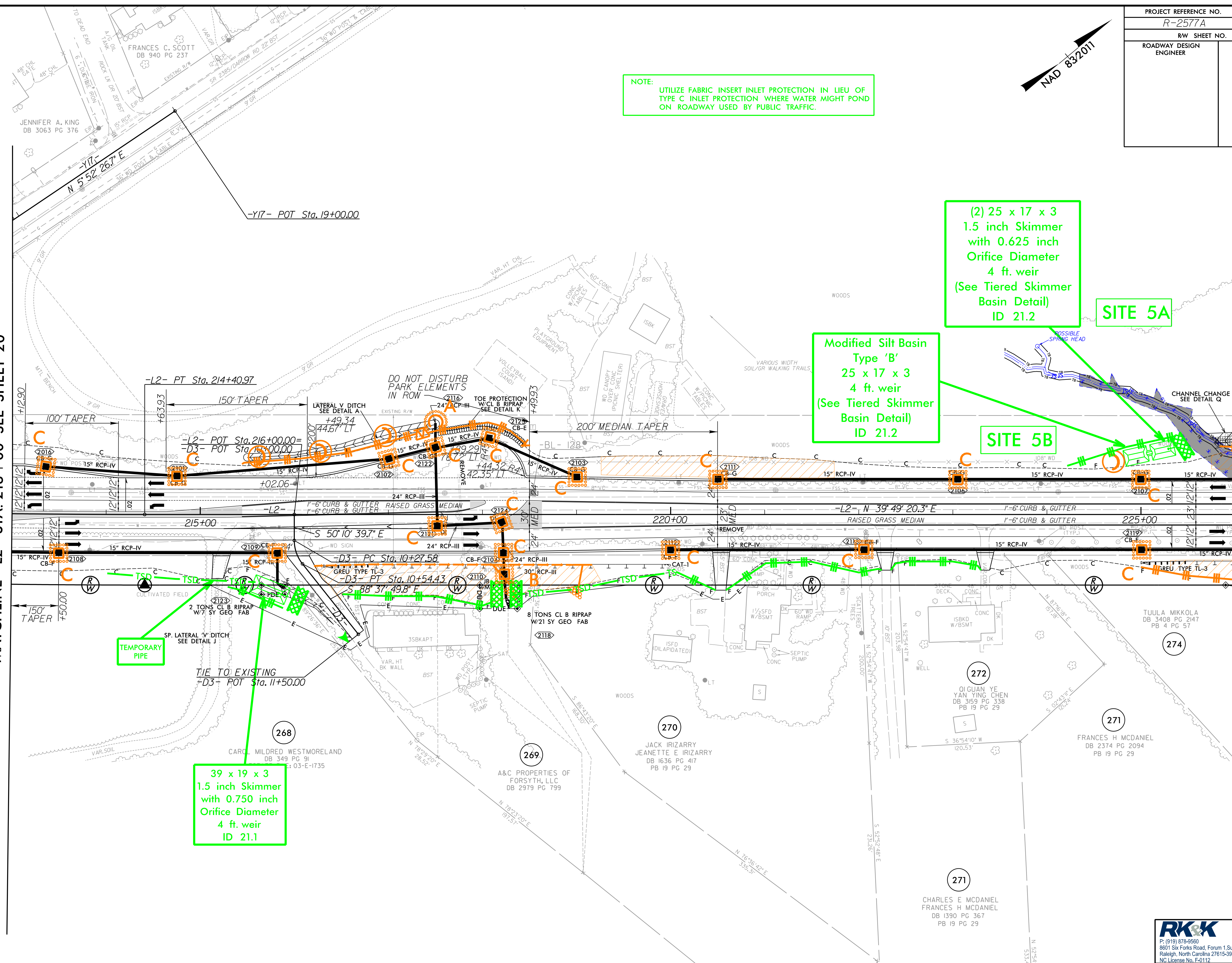
SITE 5B

39 x 19 x 3
1.5 inch Skimmer
with 0.750 inch
Orifice Diameter
4 ft. weir
ID 21.1

TEMPORARY
PIPE

MATCHLINE -L2- STA. 213 + 00 SEE SHEET 20

MATCHLINE -L2- STA. 226 + 00 SEE SHEET 22



NOTE: PROPOSED LANDSCAPE
SCREENING - SEE LANDSCAPE
PLANS

NOTE: ALL DRIVEWAYS ARE 18'
UNLESS OTHERWISE NOTED

RK&K
P: (919) 378-9550
8601 Six Forks Road, Forum 1, Suite 700
Raleigh, North Carolina 27615-3960
NC License No. F-0112
Engineers | Construction Managers | Planners | Scientists
www.rk.com
Responsive People | Creative Solutions

8/17/99
R:\16_2023\Projects\EC-48\Const\Control\N-R-2577A-EC_psh48_F.mxd.dgn
16/08/2023 10:51:41 AM