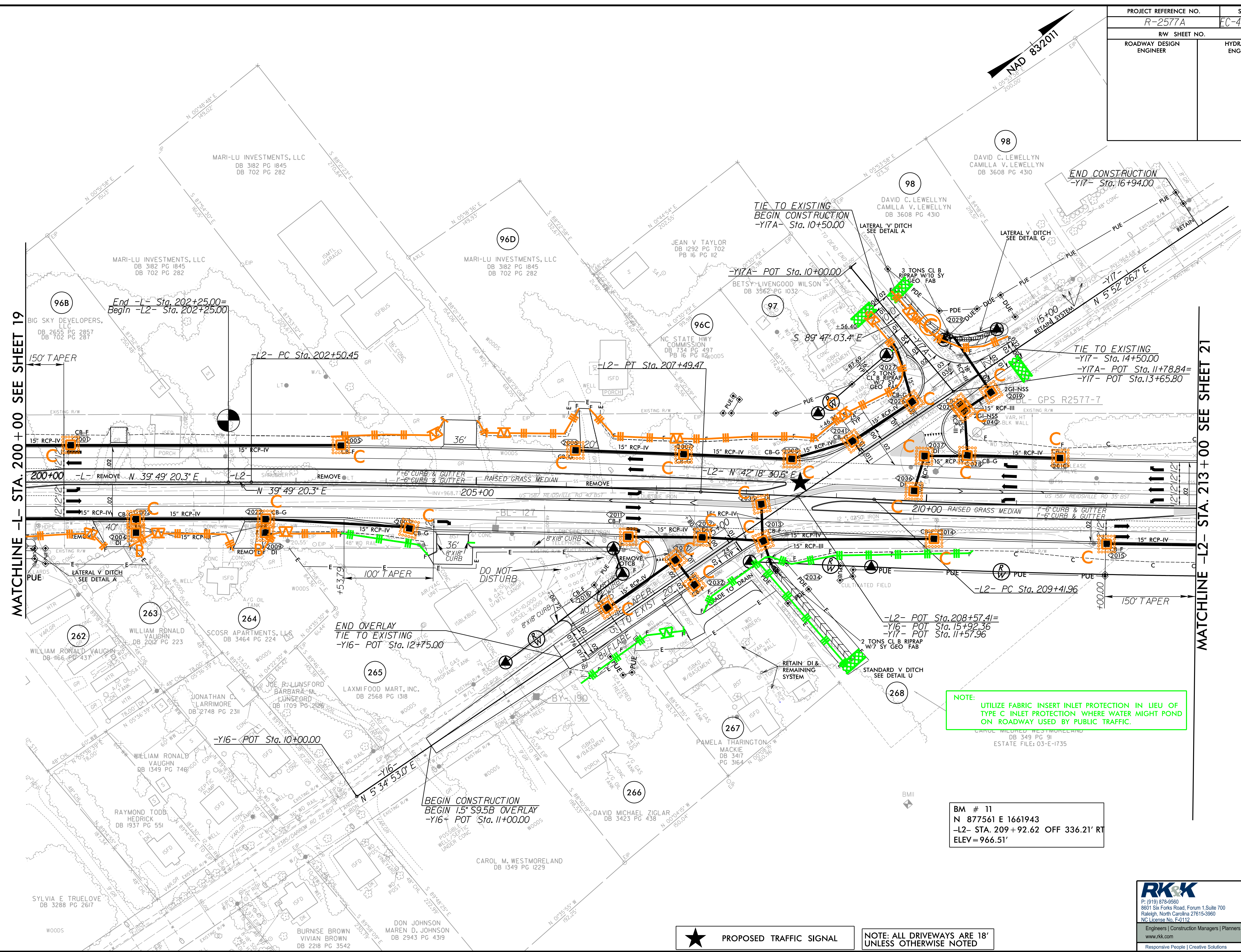


PROJECT REFERENCE NO. R-2577A	SHEET NO. EC-47/CONST.20
RW SHEET NO. ROADWAY DESIGN ENGINEER	HYDRAULICS ENGINEER

8/17/19
I:\16_2023\Projects\SH\ERoston\Control\NR-2577A_EC-psk47_F.mxd.dgn



MATCHLINE -L- STA. 200+00 SEE SHEET 19

MATCHLINE -L2- STA. 213+00 SEE SHEET 21

NOTE: UTILIZE FABRIC INSERT INLET PROTECTION IN LIEU OF TYPE C INLET PROTECTION WHERE WATER MIGHT POND ON ROADWAY USED BY PUBLIC TRAFFIC.

BM # 11
N 877561 E 1661943
-L2- STA. 209+92.62 OFF 336.21' RT
ELEV=966.51'

★ PROPOSED TRAFFIC SIGNAL

NOTE: ALL DRIVEWAYS ARE 18' UNLESS OTHERWISE NOTED

RK&K
P: (919) 378-9550
8601 Six Forks Road, Forum 1, Suite 700
Raleigh, North Carolina 27615-3960
NC License No. F-0112
Engineers | Construction Managers | Planners | Scientists
www.rk.com
Responsive People | Creative Solutions