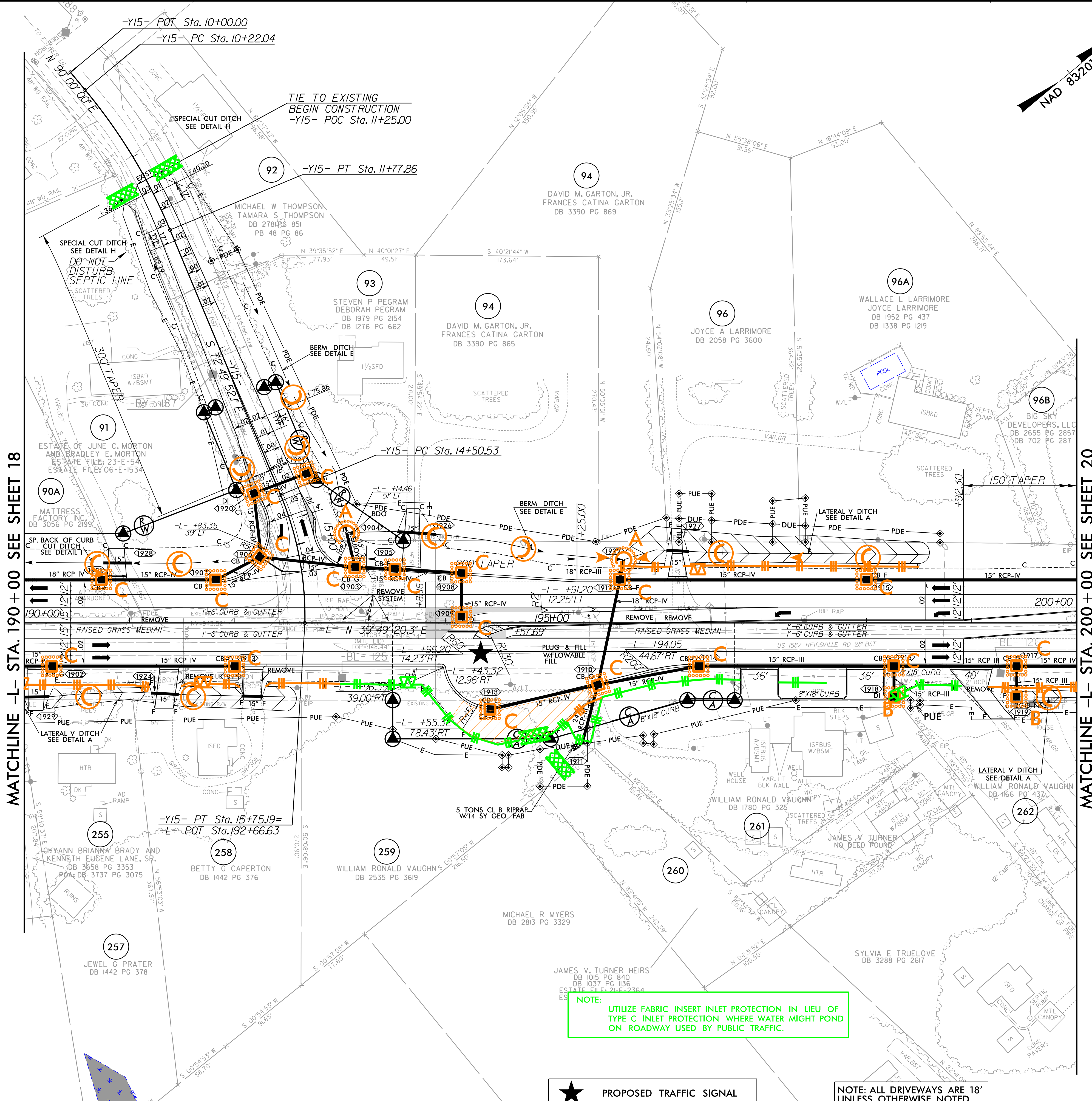


PROJECT REFERENCE NO. R-2577A	SHEET NO. EC-46/CONST.19
RW SHEET NO. ROADWAY DESIGN ENGINEER	HYDRAULICS ENGINEER



MATCHLINE -L- STA. 190+00 SEE SHEET 18

MATCHLINE -L- STA. 200+00 SEE SHEET 20

NOTE: UTILIZE FABRIC INSERT INLET PROTECTION IN LIEU OF TYPE C INLET PROTECTION WHERE WATER MIGHT POND ON ROADWAY USED BY PUBLIC TRAFFIC.

★ PROPOSED TRAFFIC SIGNAL

NOTE: ALL DRIVEWAYS ARE 18' UNLESS OTHERWISE NOTED

8/17/19

I:\16-2023\16-2023-Hydraulics\CA00D\PSH\ER-osstonControl\N-2577A-EC_psh46_F.mxd.dgn

RK&K
 P: (919) 378-9550
 8601 Six Forks Road, Forum 1, Suite 700
 Raleigh, North Carolina 27615-3960
 NC License No. F-0112
 Engineers | Construction Managers | Planners | Scientists
 www.rk.com
 Responsive People | Creative Solutions