

PROJECT REFERENCE NO.	R-2577A	SHEET NO.	EC-41/CONST.14
ROADWAY DESIGN ENGINEER		HYDRAULICS ENGINEER	

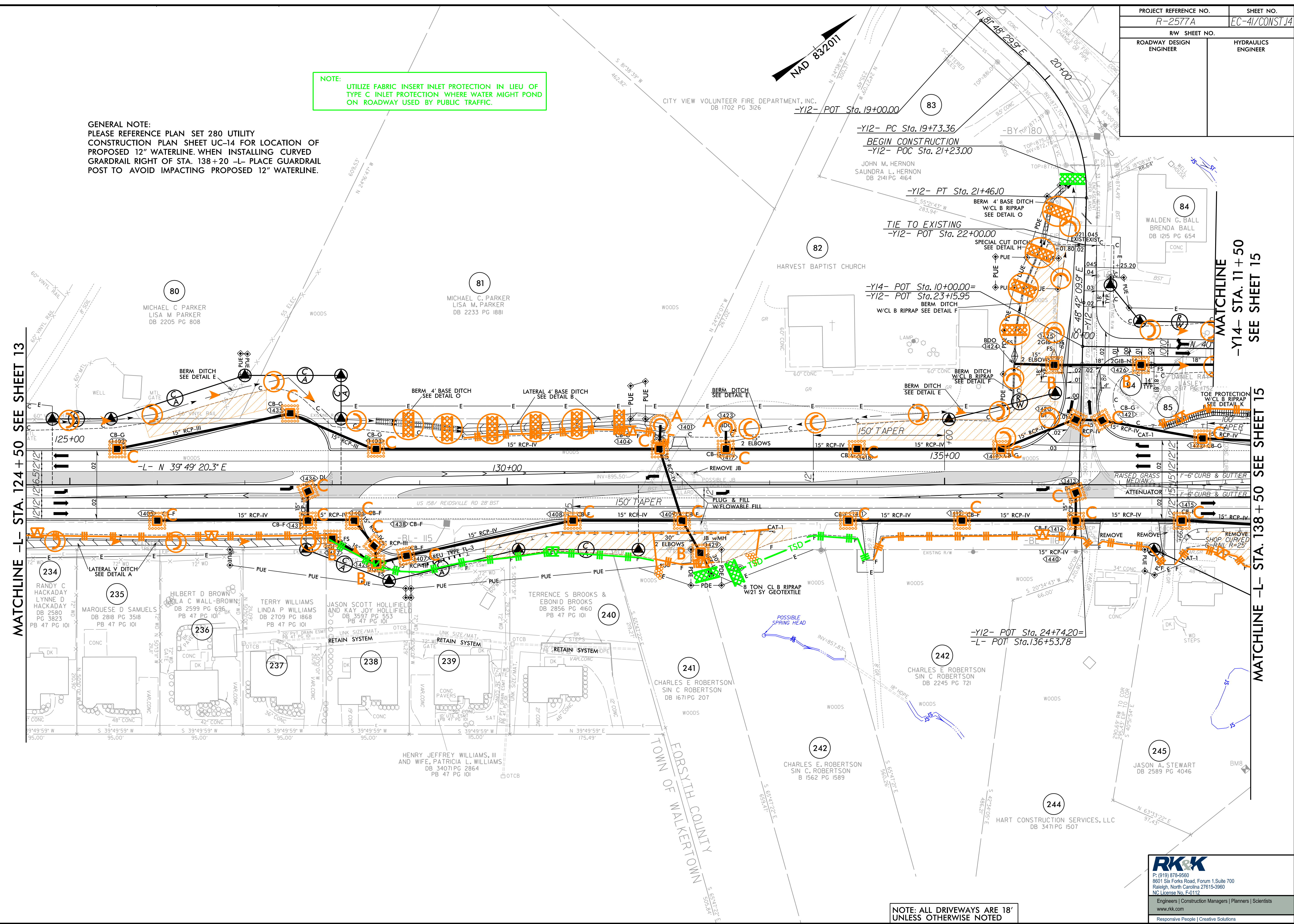
NOTE:
UTILIZE FABRIC INSERT INLET PROTECTION IN LIEU OF TYPE C INLET PROTECTION WHERE WATER MIGHT POND ON ROADWAY USED BY PUBLIC TRAFFIC.

GENERAL NOTE:
PLEASE REFERENCE PLAN SET 280 UTILITY CONSTRUCTION PLAN SHEET UC-14 FOR LOCATION OF PROPOSED 12" WATERLINE. WHEN INSTALLING CURVED GRADRAIL RIGHT OF STA. 138+20 -L- PLACE GUARDRAIL POST TO AVOID IMPACTING PROPOSED 12" WATERLINE.

MATCHLINE -L- STA. 124+50 SEE SHEET 13

MATCHLINE
-Y14- STA. 11+50
SEE SHEET 15

MATCHLINE -L- STA. 138+50 SEE SHEET 15



NOTE: ALL DRIVEWAYS ARE 18' UNLESS OTHERWISE NOTED

RK&K
P: (919) 978-9550
8601 Six Forks Road, Forum 1, Suite 700
Raleigh, North Carolina 27615-3960
NC License No. F-0112

Engineers | Construction Managers | Planners | Scientists
www.rk.com

Responsive People | Creative Solutions

8/17/19

I:\6-2023\Projects\SH\EC-Const\Contra\1\N-2577A-EC-psk41.F.mxd