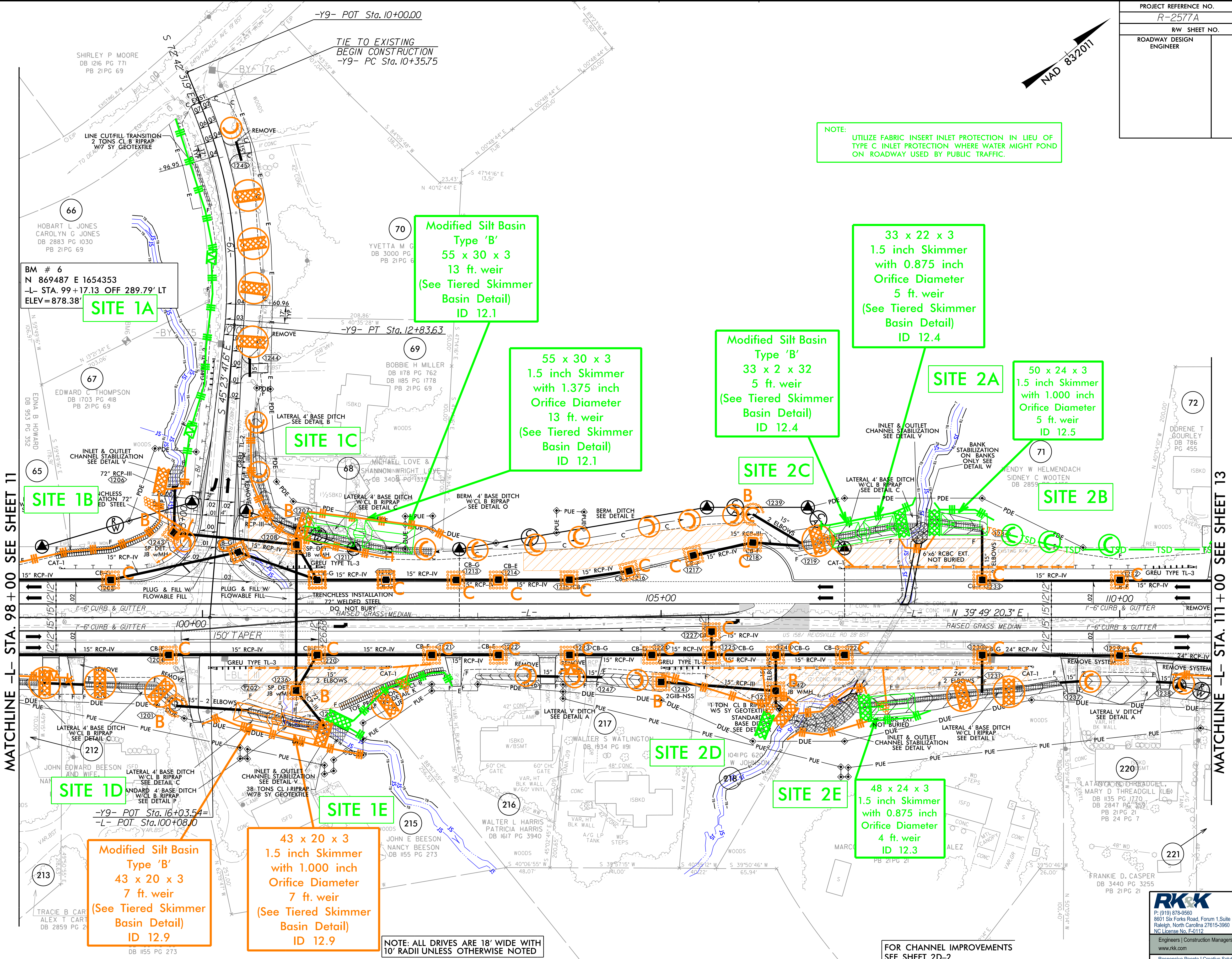


| | |
|----------------------------------|-----------------------------|
| PROJECT REFERENCE NO. R-2577A | SHEET NO. EC-39/CONST 12 |
| RW SHEET NO. | HYDRAULICS ENGINEER |
| ROADWAY DESIGN ENGINEER | |



NOTE: UTILIZE FABRIC INSERT INLET PROTECTION IN LIEU OF TYPE C INLET PROTECTION WHERE WATER MIGHT POND ON ROADWAY USED BY PUBLIC TRAFFIC.



BM # 6
N 869487 E 1654353
-L- STA. 99+17.13 OFF 289.79' LT
ELEV = 878.38'

Modified Silt Basin
Type 'B'
55 x 30 x 3
13 ft. weir
(See Tiered Skimmer
Basin Detail)
ID 12.1

33 x 22 x 3
1.5 inch Skimmer
with 0.875 inch
Orifice Diameter
5 ft. weir
(See Tiered Skimmer
Basin Detail)
ID 12.4

55 x 30 x 3
1.5 inch Skimmer
with 1.375 inch
Orifice Diameter
13 ft. weir
(See Tiered Skimmer
Basin Detail)
ID 12.1

Modified Silt Basin
Type 'B'
33 x 2 x 32
5 ft. weir
(See Tiered Skimmer
Basin Detail)
ID 12.4

50 x 24 x 3
1.5 inch Skimmer
with 1.000 inch
Orifice Diameter
5 ft. weir
ID 12.5

SITE 1B

SITE 1C

SITE 2C

SITE 2B

SITE 1D

SITE 1E

SITE 2D

SITE 2E

Modified Silt Basin
Type 'B'
43 x 20 x 3
7 ft. weir
(See Tiered Skimmer
Basin Detail)
ID 12.9

43 x 20 x 3
1.5 inch Skimmer
with 1.000 inch
Orifice Diameter
7 ft. weir
(See Tiered Skimmer
Basin Detail)
ID 12.9

48 x 24 x 3
1.5 inch Skimmer
with 0.875 inch
Orifice Diameter
4 ft. weir
ID 12.3

NOTE: ALL DRIVES ARE 18' WIDE WITH 10' RADII UNLESS OTHERWISE NOTED

FOR CHANNEL IMPROVEMENTS
SEE SHEET 2D-2

RK&K
P: (919) 378-9550
8601 Six Forks Road, Forum 1, Suite 700
Raleigh, North Carolina 27615-3960
NC License No. F-0112
www.rk.com

Engineers | Construction Managers | Planners | Scientists
Responsive People | Creative Solutions

8/17/99
C:\ADD\PSH\ER\osonControl\N-r-2577A-EC-ps39_F.mol.dgn
1/16/2023

MATCHLINE -L- STA. 98+00 SEE SHEET 11

MATCHLINE -L- STA. 111+00 SEE SHEET 13