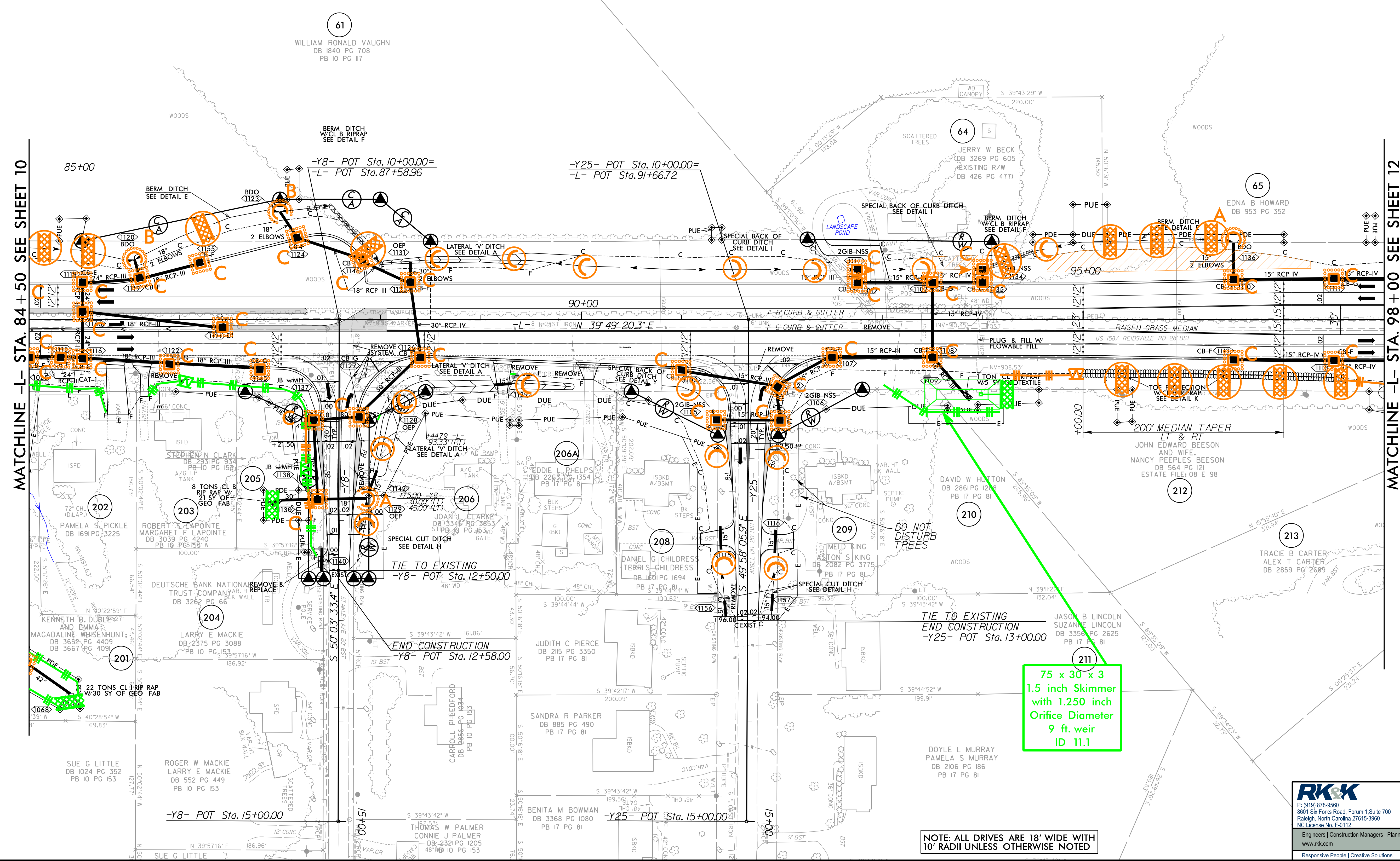


PROJECT REFERENCE NO. R-2577A	SHEET NO. EC-38/CONST II
RW SHEET NO.	HYDRAULICS ENGINEER
ROADWAY DESIGN ENGINEER	

NOTE:
UTILIZE FABRIC INSERT INLET PROTECTION IN LIEU OF TYPE C INLET PROTECTION WHERE WATER MIGHT POND ON ROADWAY USED BY PUBLIC TRAFFIC.



75 x 30 x 3
1.5 inch Skimmer
with 1.250 inch
Orifice Diameter
9 ft. weir
ID 11.1

NOTE: ALL DRIVES ARE 18' WIDE WITH 10' RADII UNLESS OTHERWISE NOTED

RK&K
P: (919) 378-9550
8601 Six Forks Road, Forum 1, Suite 700
Raleigh, North Carolina 27615-3960
NC License No. F-0112

Engineers | Construction Managers | Planners | Scientists
www.rk.com
Responsive People | Creative Solutions

8/17/99
I:\16-2023\Hydraulics\CAADD\PSH\ErasonControl\A-R-2577A-EC-ps38.F.mol.dgn