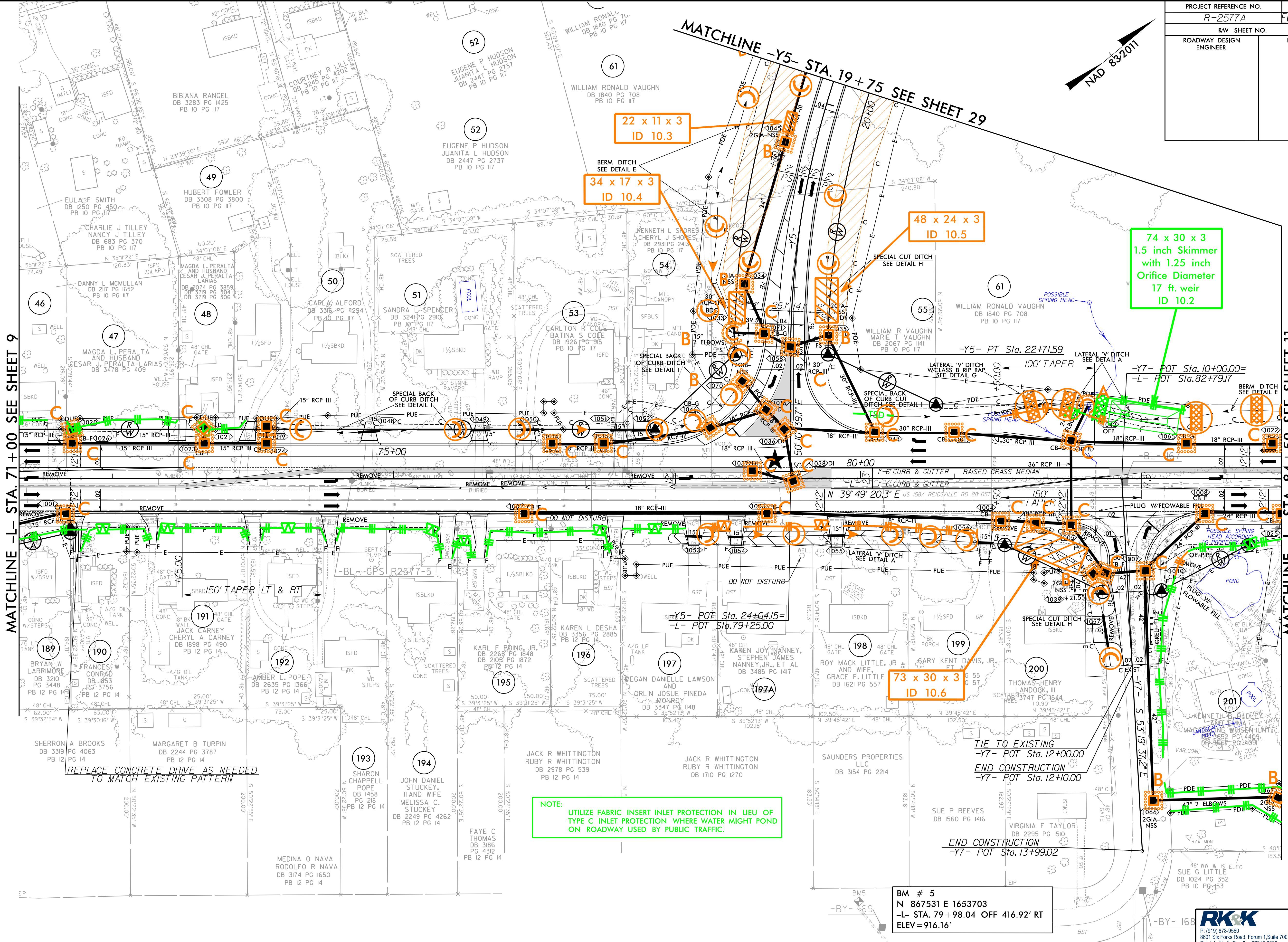


PROJECT REFERENCE NO. R-2577A	SHEET NO. EC-37/CONST.10
ROADWAY DESIGN ENGINEER	HYDRAULICS ENGINEER



MATCHLINE -L- STA. 71+00 SEE SHEET 9

MATCHLINE -L- STA. 84+50 SEE SHEET 11

MATCHLINE -Y5- STA. 19+75 SEE SHEET 29

NOTE: UTILIZE FABRIC INSERT INLET PROTECTION IN LIEU OF TYPE C INLET PROTECTION WHERE WATER MIGHT POND ON ROADWAY USED BY PUBLIC TRAFFIC.

REPLACE CONCRETE DRIVE AS NEEDED TO MATCH EXISTING PATTERN

BM # 5
N 867531 E 1653703
-L- STA. 79+98.04 OFF 416.92' RT
ELEV = 916.16'

★ PROPOSED TRAFFIC SIGNAL

NOTE: ALL DRIVEWAYS ARE 18' UNLESS OTHERWISE NOTED

MANNA BAPTIST CHURCH
DB 1636 PG 1729

RK&K
P: (919) 378-9550
8601 Six Forks Road, Forum 1, Suite 700
Raleigh, North Carolina 27615-3960
NC License No. F-0112
Engineers | Construction Managers | Planners | Scientists
www.rk.com
Responsive People | Creative Solutions

8/17/2023 C:\ADD\PSH\EC-Const\ol\NR-2577A-EC-psh37_F.mxd.dgn