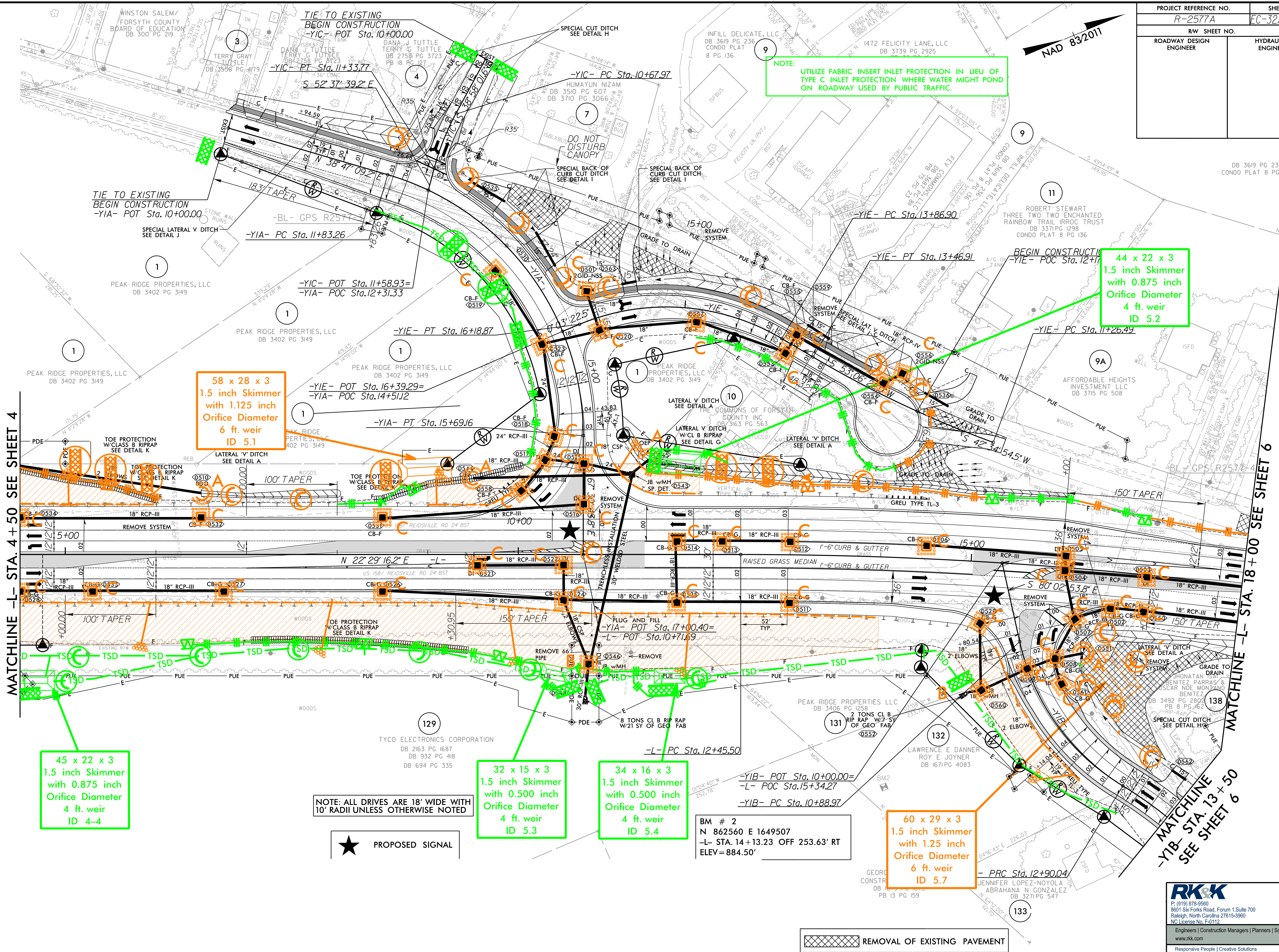


8/17/19

I:\16-2023\Projects\Roadway\EC-32\Const\Drawings\EC-32-Const-5.dgn  
 1/16/2023 10:11:15 AM  
 User: jkennedy



**NOTE:** UTILIZE FABRIC INSERT INLET PROTECTION IN LIEU OF TYPE C INLET PROTECTION WHERE WATER MIGHT POND ON ROADWAY USED BY PUBLIC TRAFFIC.

44 x 22 x 3  
1.5 inch Skimmer  
with 0.875 inch  
Orifice Diameter  
4 ft. weir  
ID 5.2

58 x 28 x 3  
1.5 inch Skimmer  
with 1.125 inch  
Orifice Diameter  
6 ft. weir  
ID 5.1

45 x 22 x 3  
1.5 inch Skimmer  
with 0.875 inch  
Orifice Diameter  
4 ft. weir  
ID 4.4

32 x 15 x 3  
1.5 inch Skimmer  
with 0.500 inch  
Orifice Diameter  
4 ft. weir  
ID 5.3

34 x 16 x 3  
1.5 inch Skimmer  
with 0.500 inch  
Orifice Diameter  
4 ft. weir  
ID 5.4

60 x 29 x 3  
1.5 inch Skimmer  
with 1.25 inch  
Orifice Diameter  
6 ft. weir  
ID 5.7

**NOTE:** ALL DRIVES ARE 18' WIDE WITH 10' RADII UNLESS OTHERWISE NOTED

★ PROPOSED SIGNAL

BM # 2  
N 862560 E 1649507  
-L- STA. 14 + 13.23 OFF 253.63' RT  
ELEV = 884.50'

REMOVAL OF EXISTING PAVEMENT