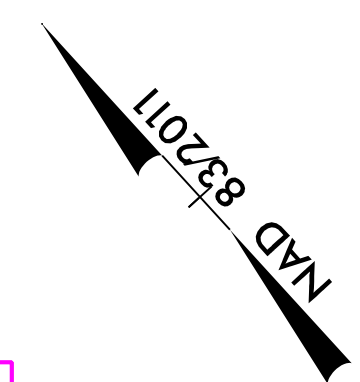


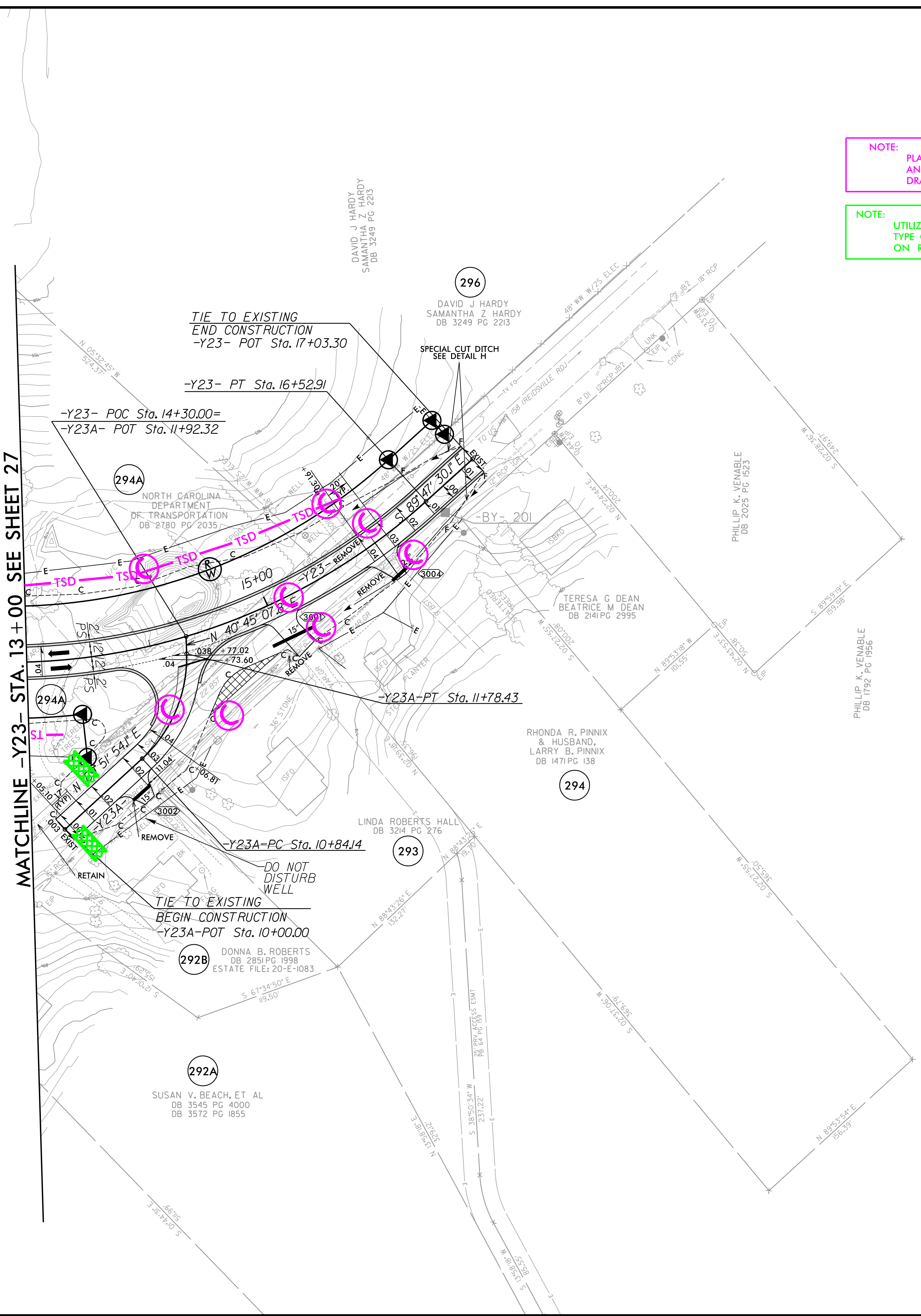
|                                  |                             |
|----------------------------------|-----------------------------|
| PROJECT REFERENCE NO.<br>R-2577A | SHEET NO.<br>EC-30/CONST.30 |
| RW SHEET NO.                     |                             |
| ROADWAY DESIGN ENGINEER          | HYDRAULICS ENGINEER         |



NOTE: PLACE TEMPORARY ROCK SEDIMENT DAMS TYPE - B AND TEMPORARY ROCK SILT CHECKS TYPE - A AT DRAINAGE OUTLETS.

CLEARING AND GRUBBING EROSION CONTROL FOR CONSTRUCTION SHEET 30

NOTE: UTILIZE FABRIC INSERT INLET PROTECTION IN LIEU OF TYPE C INLET PROTECTION WHERE WATER MIGHT POND ON ROADWAY USED BY PUBLIC TRAFFIC.



MATCHLINE -Y23- STA. 13+00 SEE SHEET 27

REMOVAL OF EXISTING PAVEMENT

**RK&K**  
 P: (919) 378-9550  
 8601 Six Forks Road, Forum 1, Suite 700  
 Raleigh, North Carolina 27615-3960  
 NC License No. F-0112  
 Engineers | Construction Managers | Planners | Scientists  
 www.rk.com  
 Responsive People | Creative Solutions

8/17/99  
 C:\Users\jch\Documents\CADD\PSH\ER\osonControl\R-2577A\_EC\_psh.30.dgn  
 12/14/2023  
 jch