

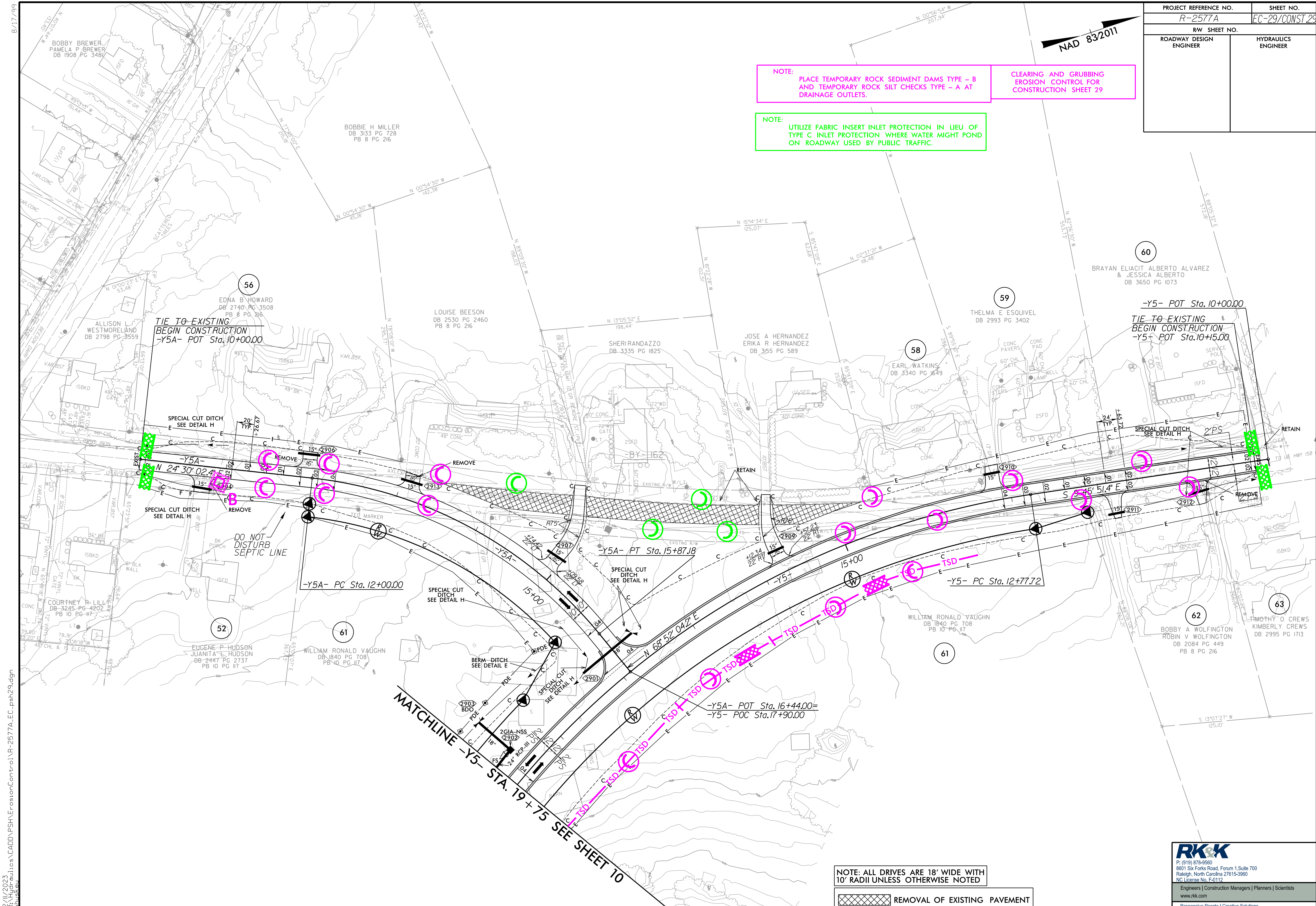
PROJECT REFERENCE NO. R-2577A	SHEET NO. FC-29/CONST.29
RW SHEET NO. ROADWAY DESIGN ENGINEER	HYDRAULICS ENGINEER

NAD 832011

NOTE:
PLACE TEMPORARY ROCK SEDIMENT DAMS TYPE - B AND TEMPORARY ROCK SILT CHECKS TYPE - A AT DRAINAGE OUTLETS.

CLEARING AND GRUBBING EROSION CONTROL FOR CONSTRUCTION SHEET 29

NOTE:
UTILIZE FABRIC INSERT INLET PROTECTION IN LIEU OF TYPE C INLET PROTECTION WHERE WATER MIGHT POND ON ROADWAY USED BY PUBLIC TRAFFIC.



NOTE: ALL DRIVES ARE 18' WIDE WITH 10' RADII UNLESS OTHERWISE NOTED

REMOVAL OF EXISTING PAVEMENT

8/17/19 12/14/2023 C:\Users\jshelton\OneDrive\Documents\Projects\2577A\FC-29\CONST.29.dgn

RK&K
 P: (919) 378-9550
 8601 Six Forks Road, Forum 1, Suite 700
 Raleigh, North Carolina 27615-3960
 NC License No. F-0112
 Engineers | Construction Managers | Planners | Scientists
 www.rk.com
 Responsive People | Creative Solutions