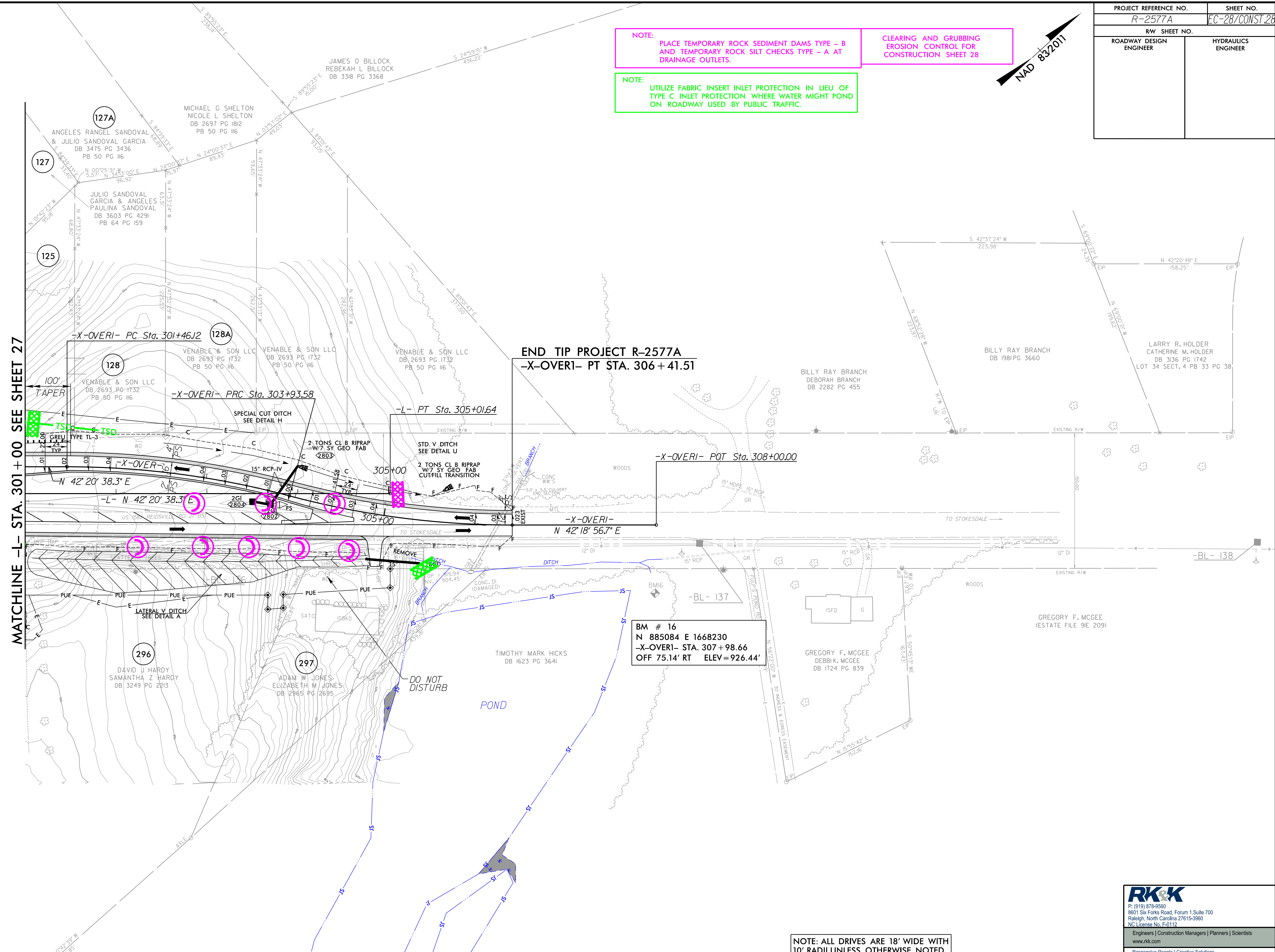
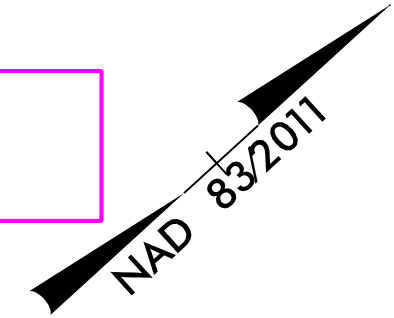


PROJECT REFERENCE NO. R-2577A	SHEET NO. EC-28/CONST.28
RW SHEET NO.	HYDRAULICS ENGINEER
ROADWAY DESIGN ENGINEER	

**NOTE:**  
PLACE TEMPORARY ROCK SEDIMENT DAMS - B AND TEMPORARY ROCK SILT CHECKS TYPE - A AT DRAINAGE OUTLETS.

**NOTE:**  
UTILIZE FABRIC INSERT INLET PROTECTION IN LIEU OF TYPE C INLET PROTECTION WHERE WATER MIGHT POND ON ROADWAY USED BY PUBLIC TRAFFIC.

CLEARING AND GRUBBING EROSION CONTROL FOR CONSTRUCTION SHEET 28



MATCHLINE -L- STA. 301 + 00 SEE SHEET 27

**END TIP PROJECT R-2577A**  
-X-OVER- PT STA. 306 + 41.51

BM # 16  
N 885084 E 1668230  
-X-OVER- STA. 307 + 98.66  
OFF 75.14' RT ELEV = 926.44'

NOTE: ALL DRIVES ARE 18' WIDE WITH 10' RADII UNLESS OTHERWISE NOTED

**RK&K**  
P: (919) 378-9550  
8601 Six Forks Road, Forum 1, Suite 700  
Raleigh, North Carolina 27615-3960  
NC License No. F-0112

Engineers | Construction Managers | Planners | Scientists  
www.rk.com  
Responsive People | Creative Solutions

8/17/199  
R:\Projects\2023\Projects\EC-28/CONST.28.dgn  
8/17/2023  
R:\Projects\2023\Projects\EC-28/CONST.28.dgn