

**Modified Silt Basin
Type 'B'**
110 x 32 x 3
27 ft. weir
(See Tiered Skimmer
Basin Detail)
ID 27.1

NOTE:
PLACE TEMPORARY ROCK SEDIMENT DAMS TYPE - B AND TEMPORARY ROCK SILT CHECKS TYPE - A AT DRAINAGE OUTLETS.

NOTE:
UTILIZE FABRIC INSERT INLET PROTECTION IN LIEU OF TYPE C INLET PROTECTION WHERE WATER MIGHT POND ON ROADWAY USED BY PUBLIC TRAFFIC.

**CLEARING AND GRUBBING
EROSION CONTROL FOR
CONSTRUCTION SHEET 27**

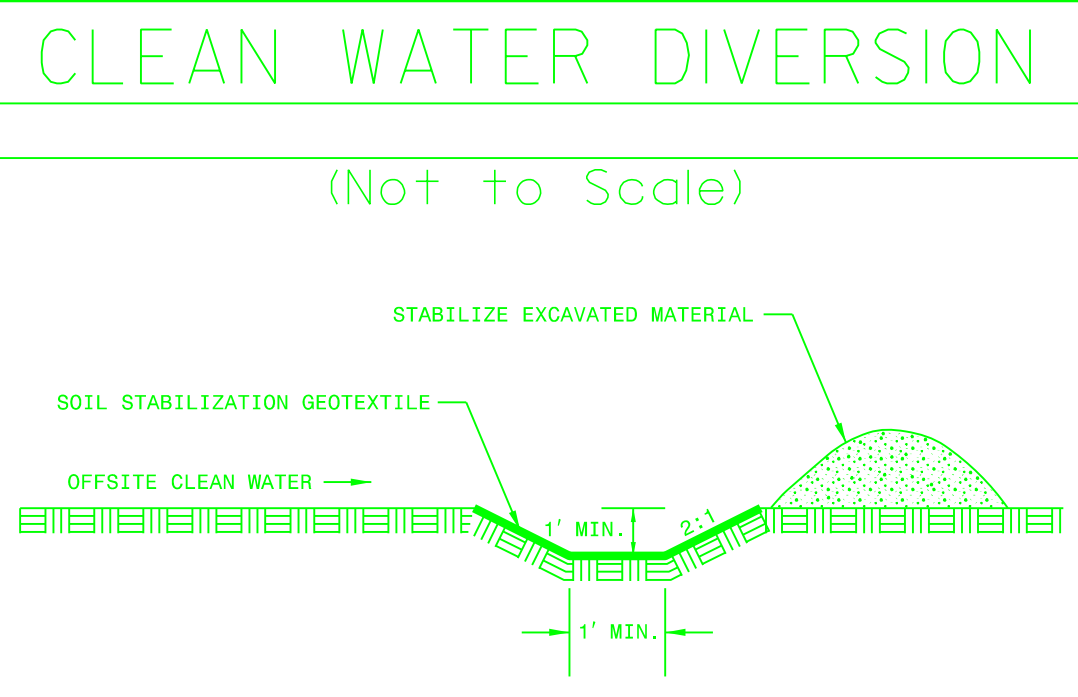
**(2) 110 x 32 x 3
2.0 inch Skimmer
with 2.000 inch
Orifice Diameter
27 ft. weir
(See Tiered Skimmer
Basin Detail)
ID 27.1**

**40 x 20 x 3
1.5 inch Skimmer
with 0.750 inch
Orifice Diameter
4 ft. weir
ID 27.3**

**74 x 37 x 3
1.5 inch Skimmer
with 1.500 inch
Orifice Diameter
10 ft. weir
ID 27.2**

SITE 7A

SITE 7B



★ PROPOSED TRAFFIC SIGNAL

REMOVAL OF EXISTING PAVEMENT

**NOTE: ALL DRIVEWAYS ARE 18'
UNLESS OTHERWISE NOTED**

MATCHLINE -L- STA. 287+50 SEE SHEET 26

MATCHLINE -Y23- STA. 13+00 SEE SHEET 30

MATCHLINE -L- STA. 301+00 SEE SHEET 28

8/17/99

8/14/2023
C:\Users\jshah\OneDrive\Documents\Projects\2577A_EC-27.dgn