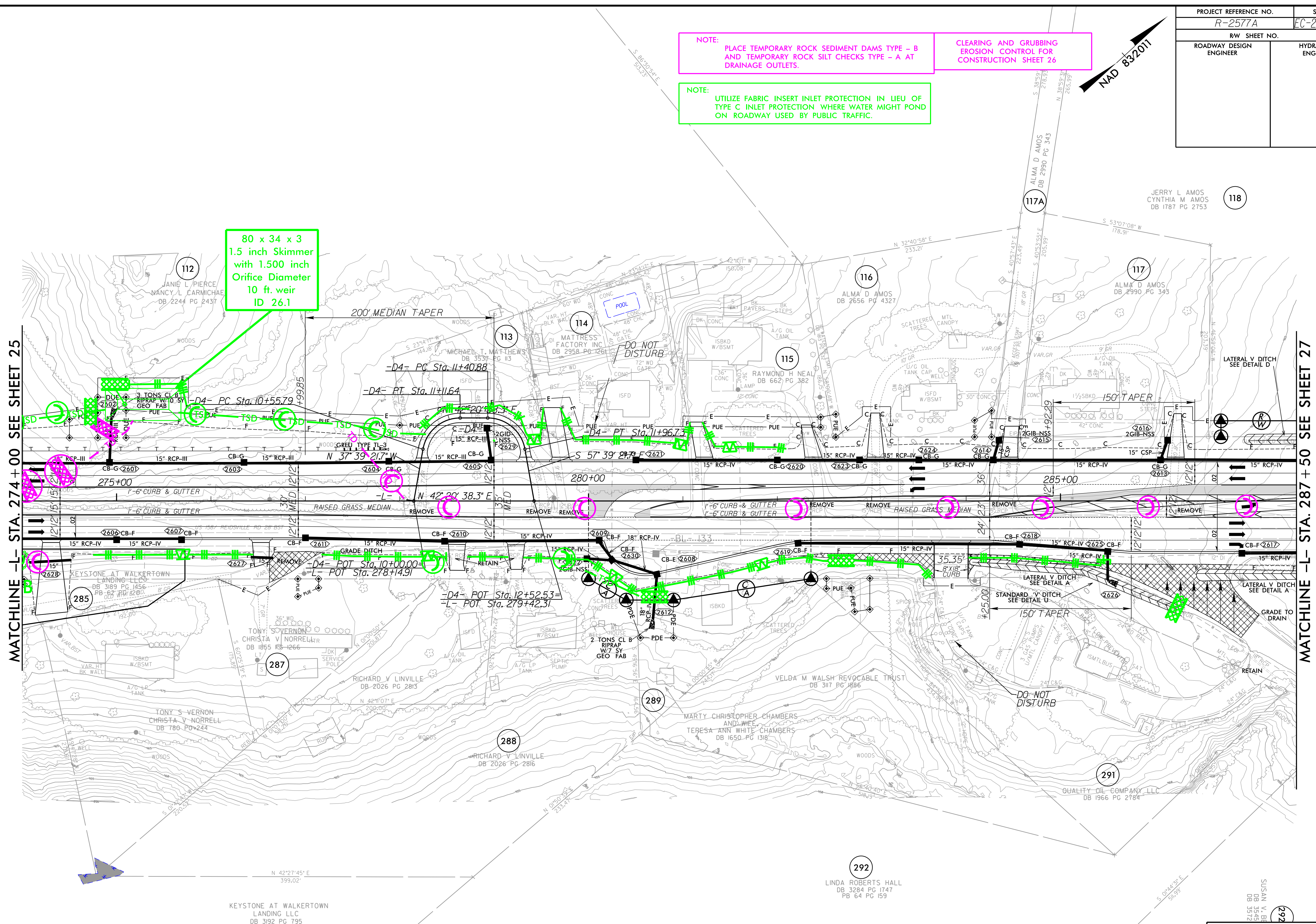
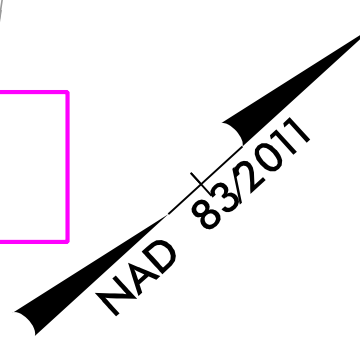


PROJECT REFERENCE NO. R-2577A	SHEET NO. EC-26/CONST.26
RW SHEET NO.	HYDRAULICS ENGINEER
ROADWAY DESIGN ENGINEER	

NOTE: PLACE TEMPORARY ROCK SEDIMENT DAMS TYPE - B AND TEMPORARY ROCK SILT CHECKS TYPE - A AT DRAINAGE OUTLETS.

CLEARING AND GRUBBING EROSION CONTROL FOR CONSTRUCTION SHEET 26

NOTE: UTILIZE FABRIC INSERT INLET PROTECTION IN LIEU OF TYPE C INLET PROTECTION WHERE WATER MIGHT POND ON ROADWAY USED BY PUBLIC TRAFFIC.



80 x 34 x 3
1.5 inch Skimmer
with 1.500 inch
Orifice Diameter
10 ft. weir
ID 26.1

MATCHLINE -L- STA. 274+00 SEE SHEET 25

MATCHLINE -L- STA. 287+50 SEE SHEET 27

NOTE: ALL DRIVES ARE 18' WIDE WITH 10' RADII UNLESS OTHERWISE NOTED

REMOVAL OF EXISTING PAVEMENT

BM # 15
N 883107 E 1666974
-L- STA. 284 + 85.96 OFF 512.40 RT
ELEV = 932.74'

RK&K
P: (919) 978-9550
8601 Six Forks Road, Forum 1, Suite 700
Raleigh, North Carolina 27615-3960
NC License No. F-0112
Engineers | Construction Managers | Planners | Scientists
www.rk.com
Responsive People | Creative Solutions

8/17/99
12/14/2023
C:\Users\jshah\OneDrive\Documents\Projects\2577A\EC-26.dgn
S:\Projects\2577A\EC-26.dgn