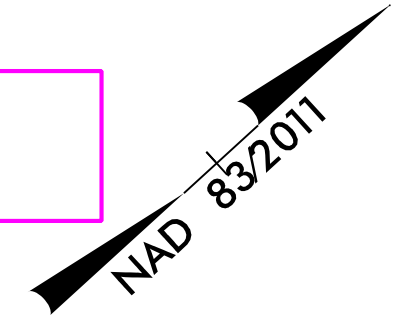


PROJECT REFERENCE NO. R-2577A	SHEET NO. EC-25/CONST.25
RW SHEET NO.	HYDRAULICS ENGINEER
ROADWAY DESIGN ENGINEER	

NOTE: PLACE TEMPORARY ROCK SEDIMENT DAMS TYPE - B AND TEMPORARY ROCK SILT CHECKS TYPE - A AT DRAINAGE OUTLETS.

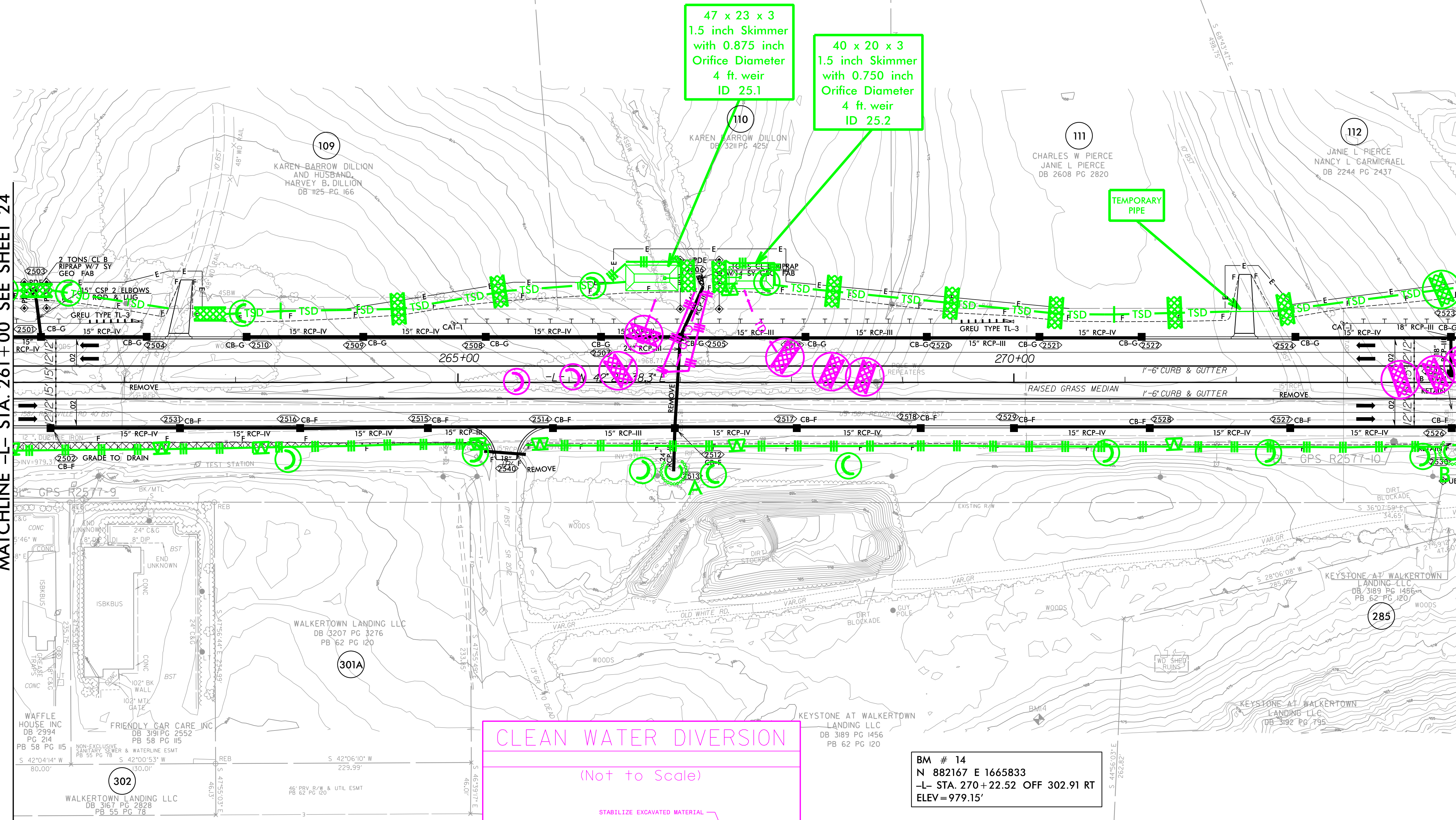
CLEARING AND GRUBBING EROSION CONTROL FOR CONSTRUCTION SHEET 25

NOTE: UTILIZE FABRIC INSERT INLET PROTECTION IN LIEU OF TYPE C INLET PROTECTION WHERE WATER MIGHT POND ON ROADWAY USED BY PUBLIC TRAFFIC.



MATCHLINE -L- STA. 261+00 SEE SHEET 24

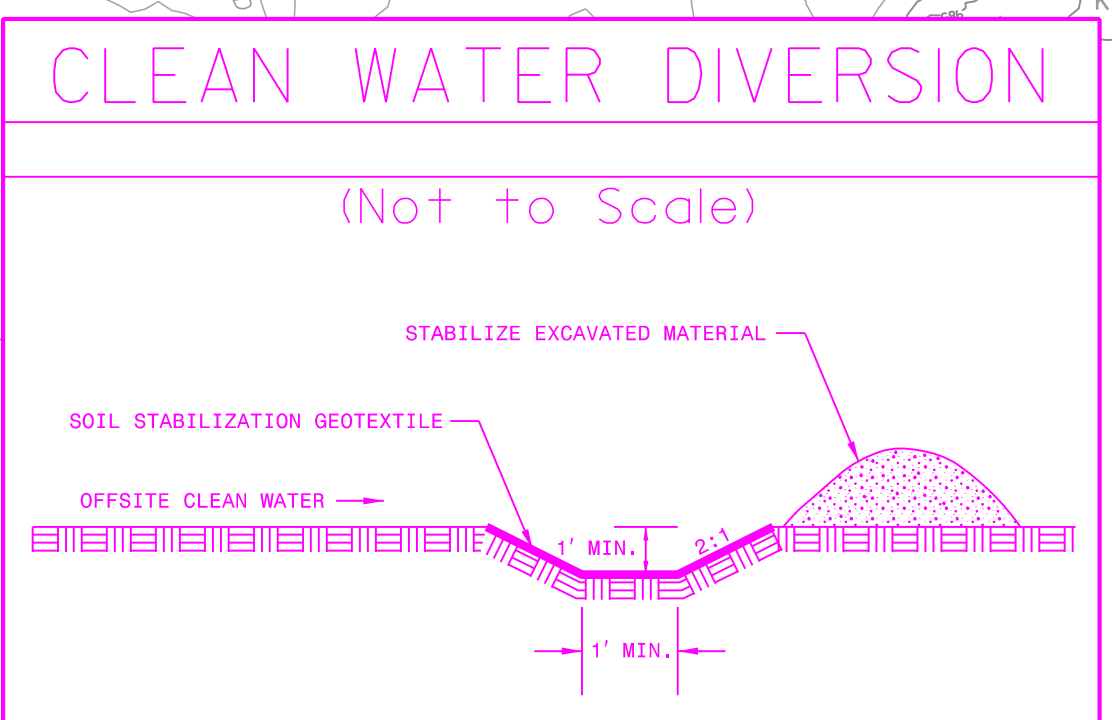
MATCHLINE -L- STA. 274+00 SEE SHEET 26



47 x 23 x 3
1.5 inch Skimmer
with 0.875 inch
Orifice Diameter
4 ft. weir
ID 25.1

40 x 20 x 3
1.5 inch Skimmer
with 0.750 inch
Orifice Diameter
4 ft. weir
ID 25.2

TEMPORARY PIPE



BM # 14
N 882167 E 1665833
-L- STA. 270+22.52 OFF 302.91 RT
ELEV = 979.15'

REMOVAL OF EXISTING PAVEMENT

NOTE: ALL DRIVES ARE 18' WIDE WITH 10' RADII UNLESS OTHERWISE NOTED

RK&K
P: (919) 378-9550
6601 Six Forks Road, Forum 1, Suite 700
Raleigh, North Carolina 27615-3960
NC License No. F-0112
Engineers | Construction Managers | Planners | Scientists
www.rk.com
Responsive People | Creative Solutions

8/17/99

I:\14\2023\Projects\Hydraulics\CADD\PSH\ERosionControl\NR-2577A_EC_psh25.dgn