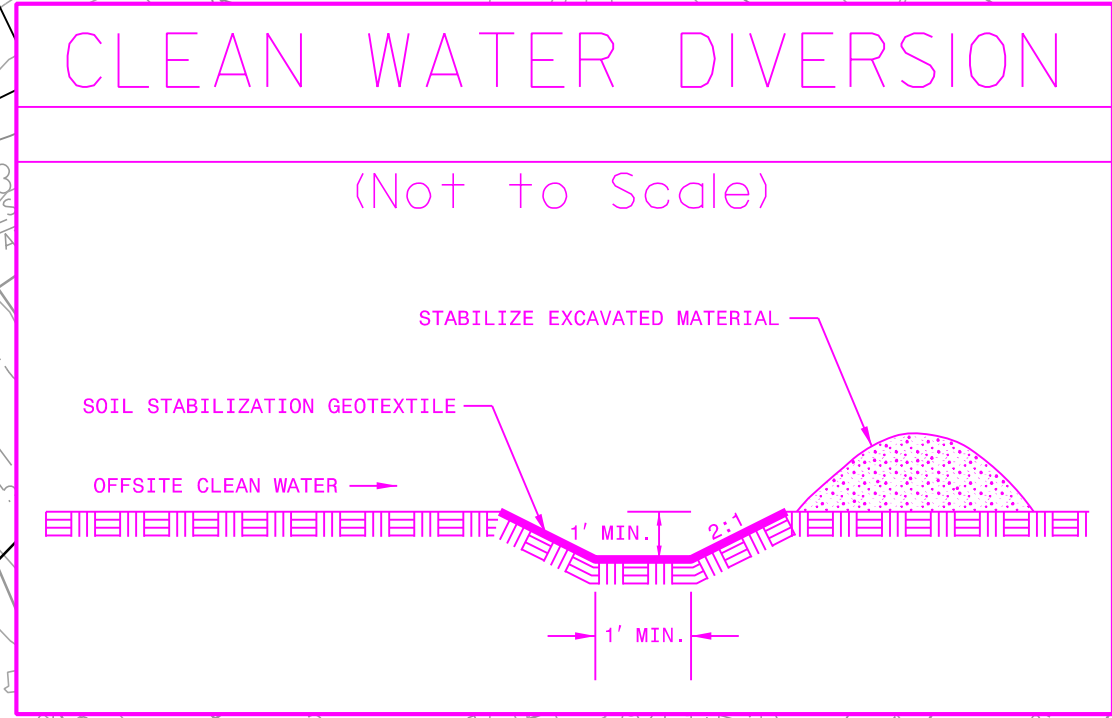
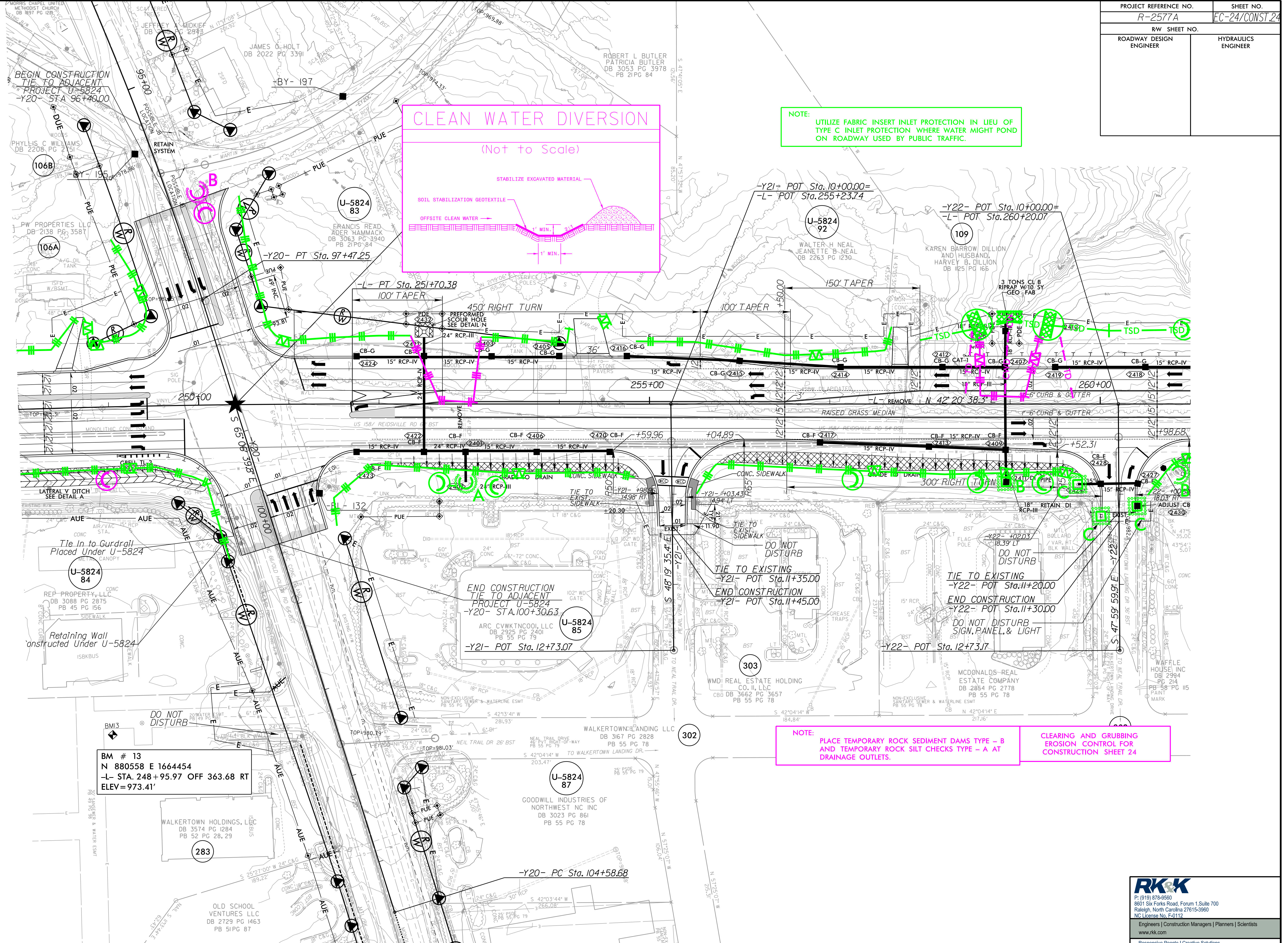


|                                         |  |                                    |  |
|-----------------------------------------|--|------------------------------------|--|
| PROJECT REFERENCE NO.<br><b>R-2577A</b> |  | SHEET NO.<br><b>EC-24/CONST.24</b> |  |
| RW SHEET NO.                            |  | HYDRAULICS ENGINEER                |  |
| ROADWAY DESIGN ENGINEER                 |  | HYDRAULICS ENGINEER                |  |



NOTE:  
UTILIZE FABRIC INSERT INLET PROTECTION IN LIEU OF TYPE C INLET PROTECTION WHERE WATER MIGHT POND ON ROADWAY USED BY PUBLIC TRAFFIC.



**BM # 13**  
N 880558 E 1664454  
-L- STA. 248 + 95.97 OFF 363.68 RT  
ELEV = 973.41'

NOTE:  
PLACE TEMPORARY ROCK SEDIMENT DAMS TYPE - B AND TEMPORARY ROCK SILT CHECKS TYPE - A AT DRAINAGE OUTLETS.

CLEARING AND GRUBBING EROSION CONTROL FOR CONSTRUCTION SHEET 24

8/17/19

R:\2023\Projects\CADD\PSH\Engineering\Control\N-2577A-EC-psh24.dgn