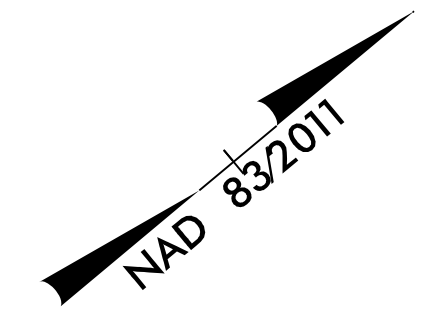


PROJECT REFERENCE NO. R-2577A	SHEET NO. EC-23/CONST.23
RW SHEET NO.	HYDRAULICS ENGINEER
ROADWAY DESIGN ENGINEER	



NOTE: PLACE TEMPORARY ROCK SEDIMENT DAMS TYPE - B AND TEMPORARY ROCK SILT CHECKS TYPE - A AT DRAINAGE OUTLETS.

NOTE: UTILIZE FABRIC INSERT INLET PROTECTION IN LIEU OF TYPE C INLET PROTECTION WHERE WATER MIGHT POND ON ROADWAY USED BY PUBLIC TRAFFIC.

CLEARING AND GRUBBING EROSION CONTROL FOR CONSTRUCTION SHEET 23

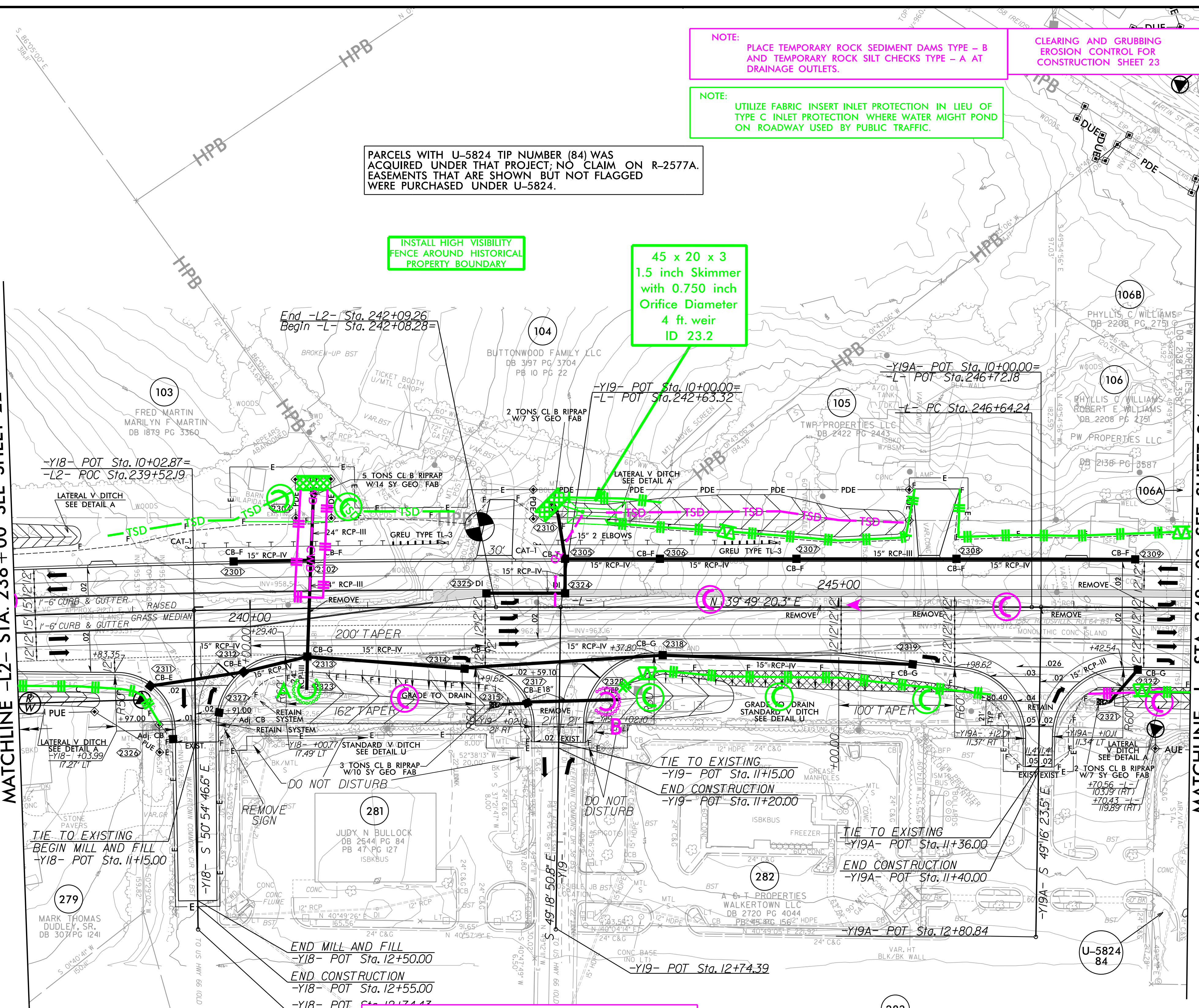
PARCELS WITH U-5824 TIP NUMBER (84) WAS ACQUIRED UNDER THAT PROJECT; NO CLAIM ON R-2577A. EASEMENTS THAT ARE SHOWN BUT NOT FLAGGED WERE PURCHASED UNDER U-5824.

INSTALL HIGH VISIBILITY FENCE AROUND HISTORICAL PROPERTY BOUNDARY

45 x 20 x 3
1.5 inch Skimmer
with 0.750 inch
Orifice Diameter
4 ft. weir
ID 23.2

MATCHLINE -L2- STA. 238 + 00 SEE SHEET 22

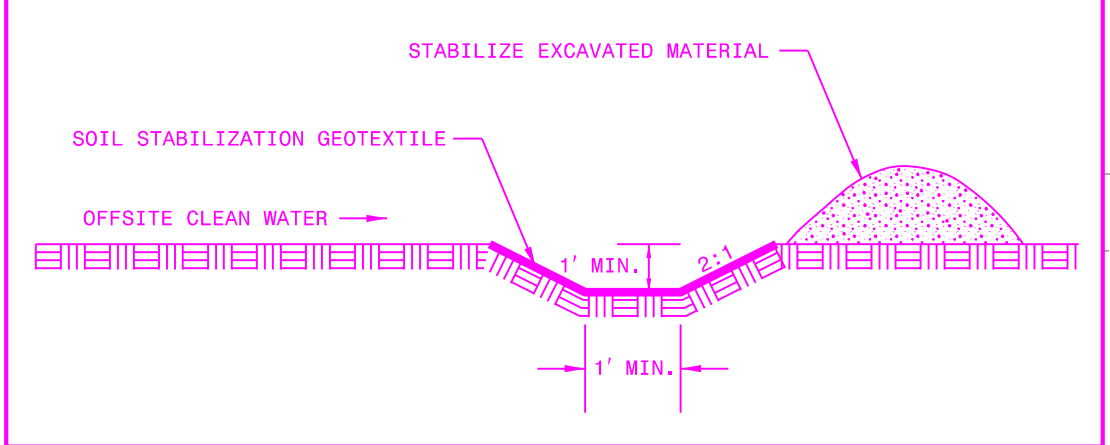
MATCHLINE -L- STA. 248 + 00 SEE SHEET 24



CLEAN WATER DIVERSION

--- CWD --- CWD --- CWD --- CWD --- CWD --- CWD ---

(Not to Scale)



NOTE: ALL DRIVEWAYS ARE 18' UNLESS OTHERWISE NOTED

REMOVAL OF EXISTING PAVEMENT

8/17/99

I:\11\2023\Projects\Roadway\EC-23\Const\EC-23.dgn

RK&K
 P: (919) 378-9550
 8601 Six Forks Road, Forum 1, Suite 700
 Raleigh, North Carolina 27615-3960
 NC License No. F-0112
 Engineers | Construction Managers | Planners | Scientists
 www.rk.com
 Responsive People | Creative Solutions