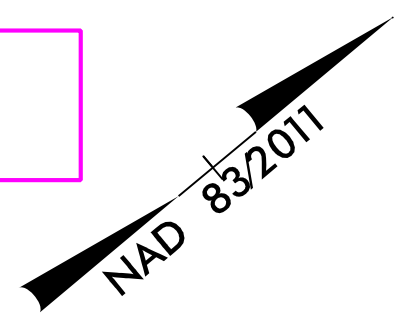


PROJECT REFERENCE NO. R-2577A	SHEET NO. EC-21/CONST.21
RW SHEET NO.	HYDRAULICS ENGINEER
ROADWAY DESIGN ENGINEER	

NOTE: PLACE TEMPORARY ROCK SEDIMENT DAMS TYPE - B AND TEMPORARY ROCK SILT CHECKS TYPE - A AT DRAINAGE OUTLETS.

NOTE: UTILIZE FABRIC INSERT INLET PROTECTION IN LIEU OF TYPE C INLET PROTECTION WHERE WATER MIGHT POND ON ROADWAY USED BY PUBLIC TRAFFIC.

CLEARING AND GRUBBING EROSION CONTROL FOR CONSTRUCTION SHEET 21



NCDOT WILL FIELD LOCATE THE AREA FOR THE FENCE AND LANDSCAPING AT THE PARK.

INSTALL SAFETY FENCE ALONG WALKING TRAIL UNTIL CHAIN LINK FENCE IS INSTALLED.

(2) 25 x 17 x 3
1.5 inch Skimmer
with 0.625 inch
Orifice Diameter
4 ft. weir
(See Tiered Skimmer
Basin Detail)
ID 21.2

SITE 5A

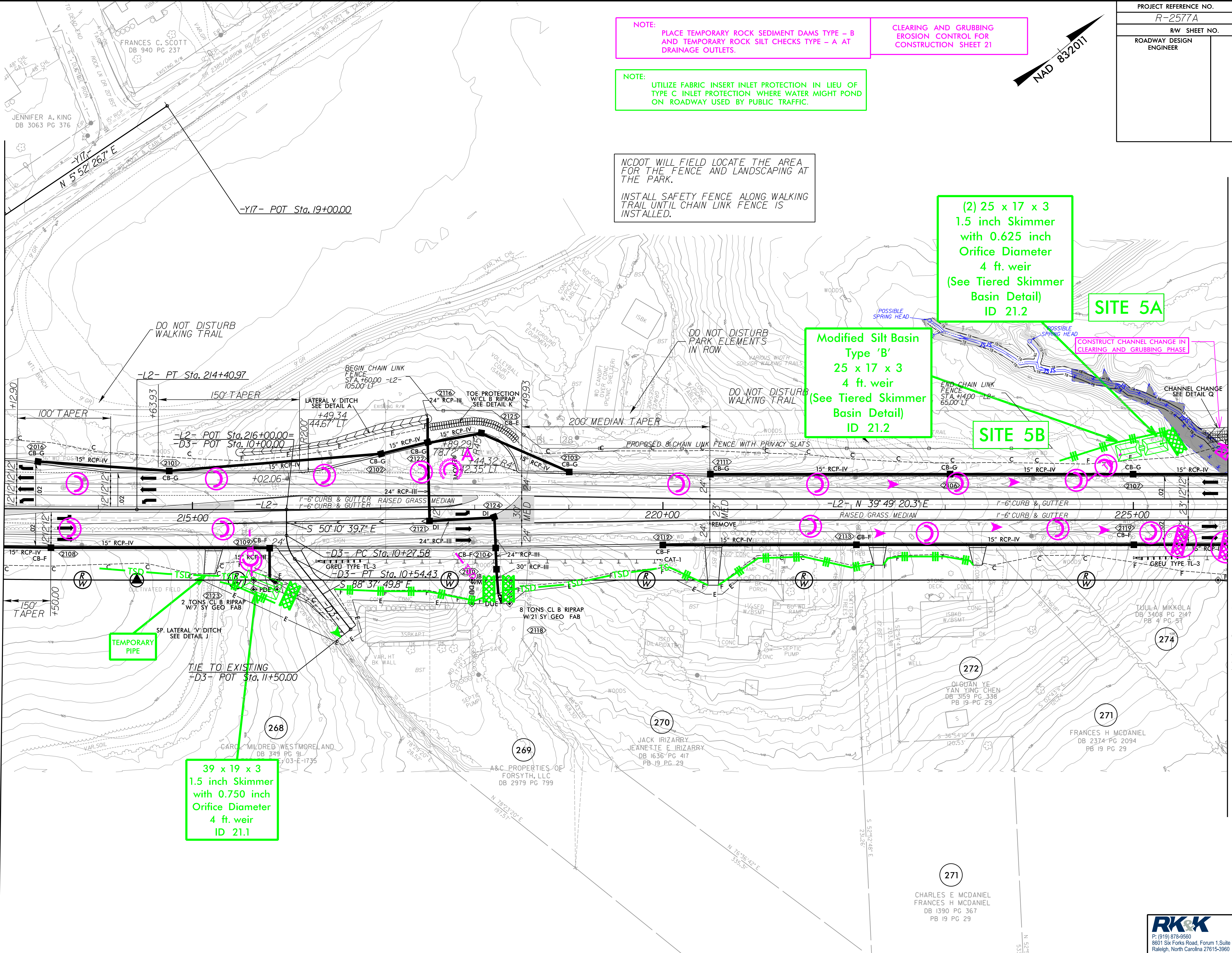
Modified Silt Basin
Type 'B'
25 x 17 x 3
4 ft. weir
(See Tiered Skimmer
Basin Detail)
ID 21.2

SITE 5B

CONSTRUCT CHANNEL CHANGE IN CLEARING AND GRUBBING PHASE

MATCHLINE -L2- STA. 213+00 SEE SHEET 20

MATCHLINE -L2- STA. 226+00 SEE SHEET 22



TEMPORARY PIPE

39 x 19 x 3
1.5 inch Skimmer
with 0.750 inch
Orifice Diameter
4 ft. weir
ID 21.1

NOTE: PROPOSED LANDSCAPE SCREENING - SEE LANDSCAPE PLANS

NOTE: ALL DRIVEWAYS ARE 18' UNLESS OTHERWISE NOTED

RK&K
P: (919) 378-9550
8601 Six Forks Road, Forum 1, Suite 700
Raleigh, North Carolina 27615-3960
NC License No. F-0112

Engineers | Construction Managers | Planners | Scientists
www.rk.com
Responsive People | Creative Solutions

8/17/99
C:\Users\jking\OneDrive\Documents\Projects\2577A\EC-21.dgn
12/14/2023
C:\Users\jking\OneDrive\Documents\Projects\2577A\EC-21.dgn