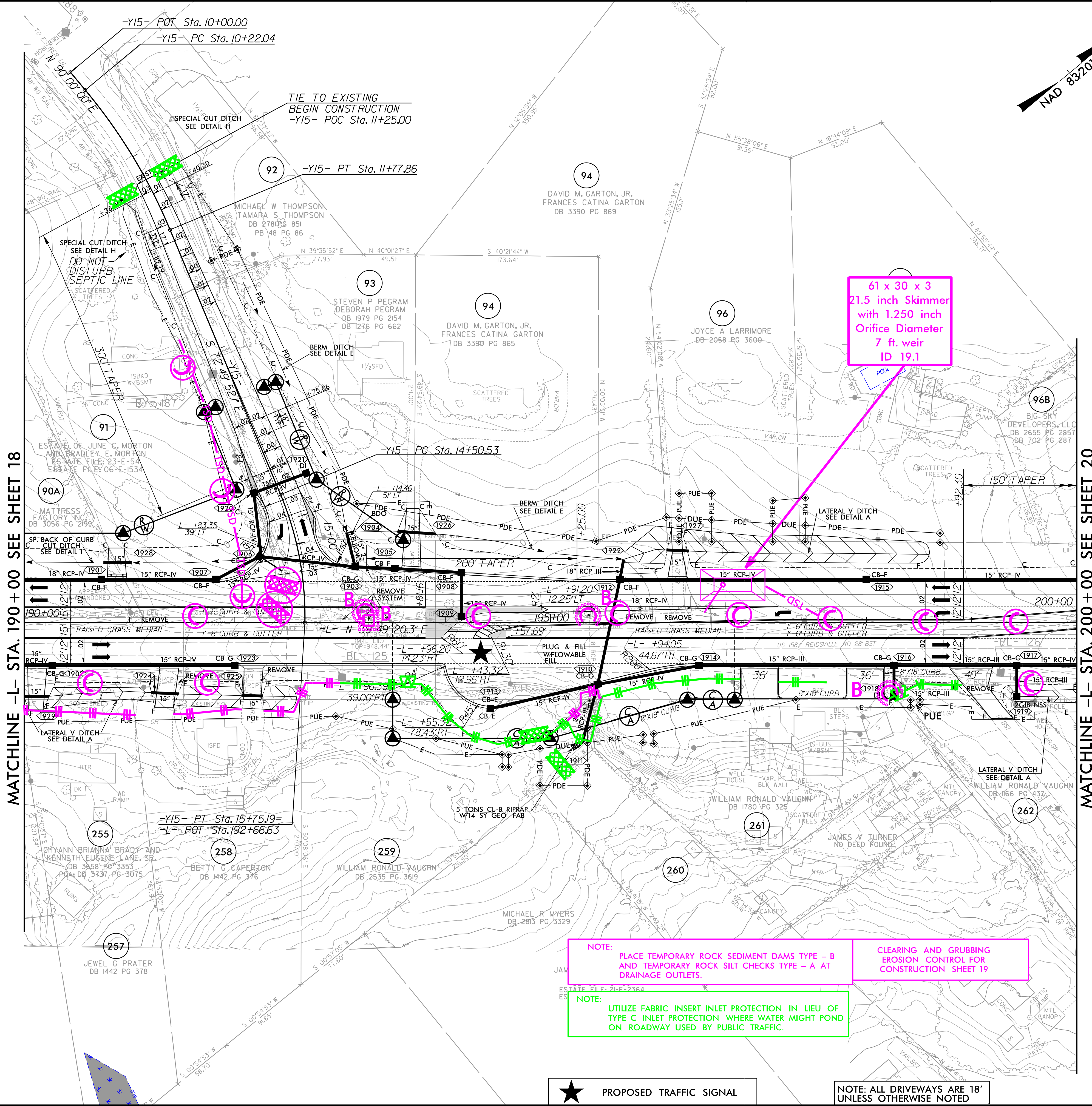


PROJECT REFERENCE NO. R-2577A	SHEET NO. EC-19/CONST.19
RW SHEET NO. ROADWAY DESIGN ENGINEER	HYDRAULICS ENGINEER



MATCHLINE -L- STA. 190 + 00 SEE SHEET 18

MATCHLINE -L- STA. 200 + 00 SEE SHEET 20

61 x 30 x 3
21.5 inch Skimmer
with 1.250 inch
Orifice Diameter
7 ft. weir
ID 19.1

NOTE: PLACE TEMPORARY ROCK SEDIMENT DAMS TYPE - B AND TEMPORARY ROCK SILT CHECKS TYPE - A AT DRAINAGE OUTLETS.

CLEARING AND GRUBBING EROSION CONTROL FOR CONSTRUCTION SHEET 19

NOTE: UTILIZE FABRIC INSERT INLET PROTECTION IN LIEU OF TYPE C INLET PROTECTION WHERE WATER MIGHT POND ON ROADWAY USED BY PUBLIC TRAFFIC.

★ PROPOSED TRAFFIC SIGNAL

NOTE: ALL DRIVEWAYS ARE 18' UNLESS OTHERWISE NOTED

8/17/19

I:\2023\Projects\Roadway\EC-19\Const\19.dgn

RK&K
P: (919) 378-9550
6601 Six Forks Road, Forum 1, Suite 700
Raleigh, North Carolina 27615-3960
NC License No. F-0112
Engineers | Construction Managers | Planners | Scientists
www.rk.com
Responsive People | Creative Solutions