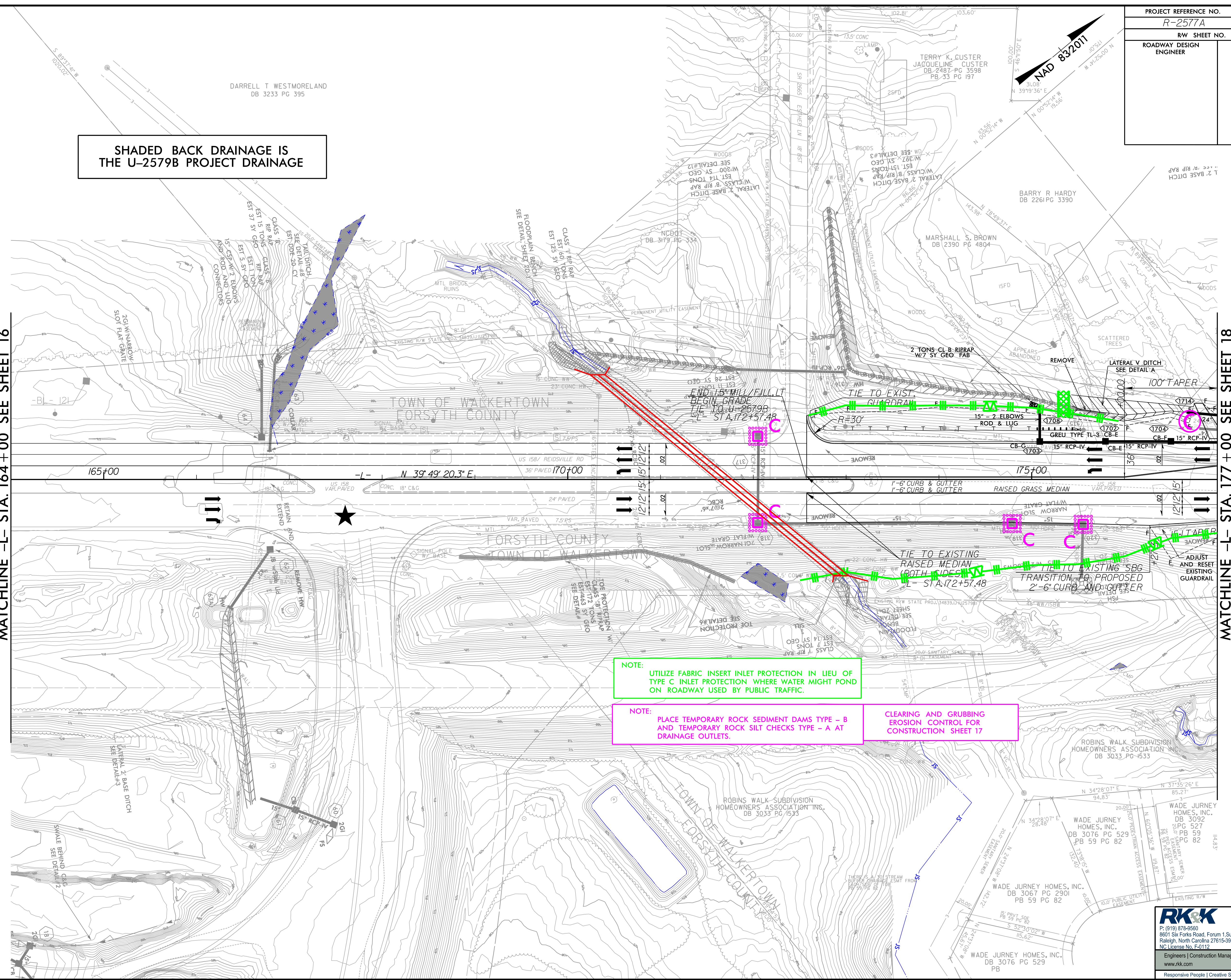


PROJECT REFERENCE NO. R-2577A	SHEET NO. EC-17/CONST.17
RW SHEET NO. ROADWAY DESIGN ENGINEER	HYDRAULICS ENGINEER

SHADED BACK DRAINAGE IS THE U-2579B PROJECT DRAINAGE

MATCHLINE -L- STA. 164+00 SEE SHEET 16

MATCHLINE -L- STA. 177+00 SEE SHEET 18



NOTE:  
UTILIZE FABRIC INSERT INLET PROTECTION IN LIEU OF TYPE C INLET PROTECTION WHERE WATER MIGHT POND ON ROADWAY USED BY PUBLIC TRAFFIC.

NOTE:  
PLACE TEMPORARY ROCK SEDIMENT DAMS TYPE - B AND TEMPORARY ROCK SILT CHECKS TYPE - A AT DRAINAGE OUTLETS.

CLEARING AND GRUBBING EROSION CONTROL FOR CONSTRUCTION SHEET 17

8/17/199  
I:\6-2023\Projects\Hydraulics\CA00D\PSH\ErosionControl\NR-2577A\_EC\_psh17.dgn

**RK&K**  
P: (919) 378-9550  
8601 Six Forks Road, Forum 1, Suite 700  
Raleigh, North Carolina 27615-3960  
NC License No. F-0112

Engineers | Construction Managers | Planners | Scientists  
www.rk.com

Responsive People | Creative Solutions