

PROJECT REFERENCE NO. R-2577A	SHEET NO. EC-14/CONST.14
RW SHEET NO. ROADWAY DESIGN ENGINEER	HYDRAULICS ENGINEER

NOTE: PLACE TEMPORARY ROCK SEDIMENT DAMS TYPE - B AND TEMPORARY ROCK SILT CHECKS TYPE - A AT DRAINAGE OUTLETS.

CLEARING AND GRUBBING EROSION CONTROL FOR CONSTRUCTION SHEET 14

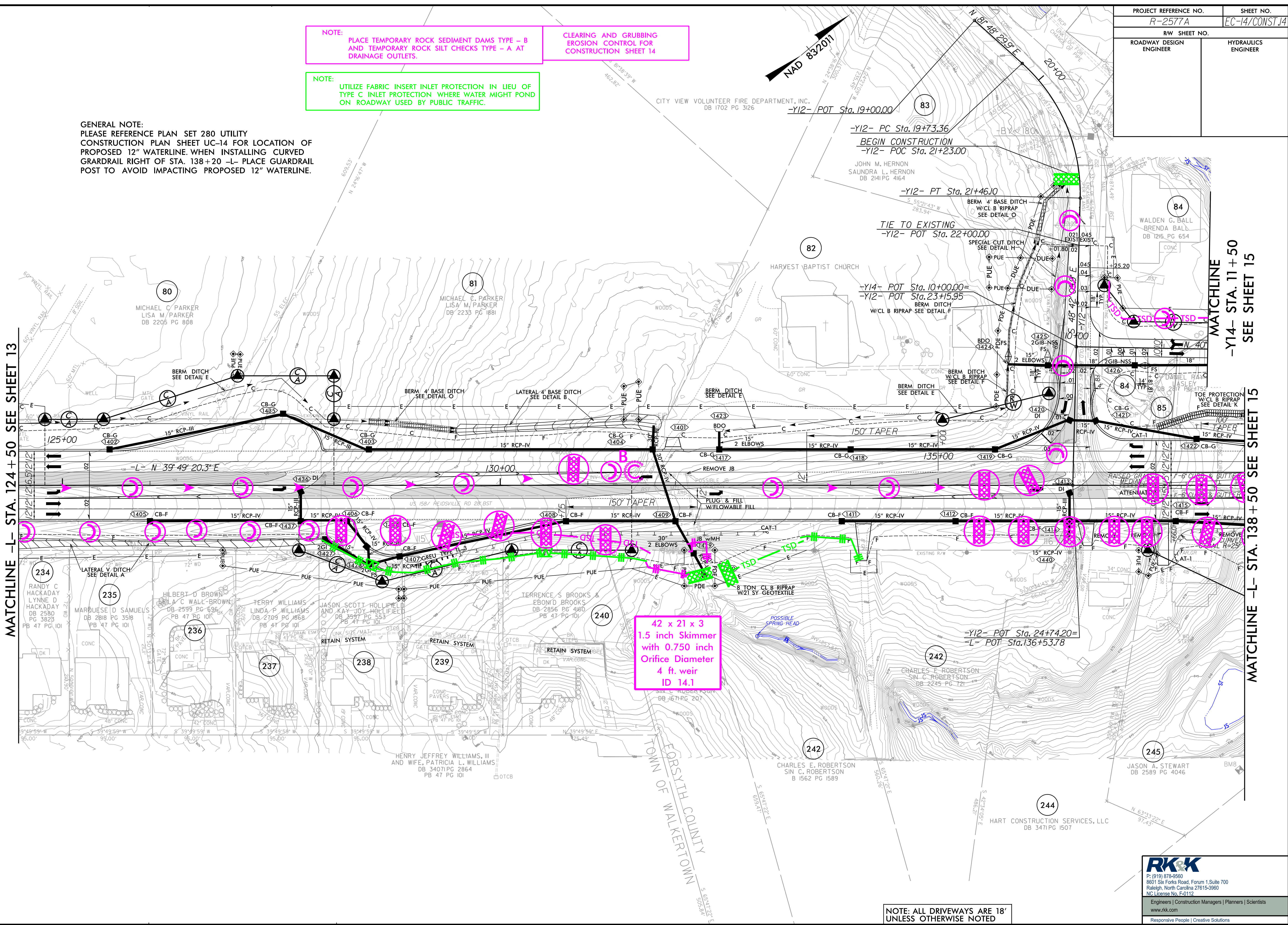
NOTE: UTILIZE FABRIC INSERT INLET PROTECTION IN LIEU OF TYPE C INLET PROTECTION WHERE WATER MIGHT POND ON ROADWAY USED BY PUBLIC TRAFFIC.

GENERAL NOTE: PLEASE REFERENCE PLAN SET 280 UTILITY CONSTRUCTION PLAN SHEET UC-14 FOR LOCATION OF PROPOSED 12" WATERLINE. WHEN INSTALLING CURVED GUARDRAIL RIGHT OF STA. 138+20 -L- PLACE GUARDRAIL POST TO AVOID IMPACTING PROPOSED 12" WATERLINE.

MATCHLINE -L- STA. 124+50 SEE SHEET 13

MATCHLINE -Y14- STA. 11+50 SEE SHEET 15

MATCHLINE -L- STA. 138+50 SEE SHEET 15



42 x 21 x 3  
1.5 inch Skimmer  
with 0.750 inch  
Orifice Diameter  
4 ft. weir  
ID 14.1

NOTE: ALL DRIVEWAYS ARE 18' UNLESS OTHERWISE NOTED

**RK&K**  
 P: (919) 378-9500  
 8601 Six Forks Road, Forum 1, Suite 700  
 Raleigh, North Carolina 27615-3960  
 NC License No. F-0112  
 Engineers | Construction Managers | Planners | Scientists  
 www.rk.com  
 Responsive People | Creative Solutions

8/17/19

C:\Users\Public\OneDrive\Documents\Projects\2577A\EC-14.dgn