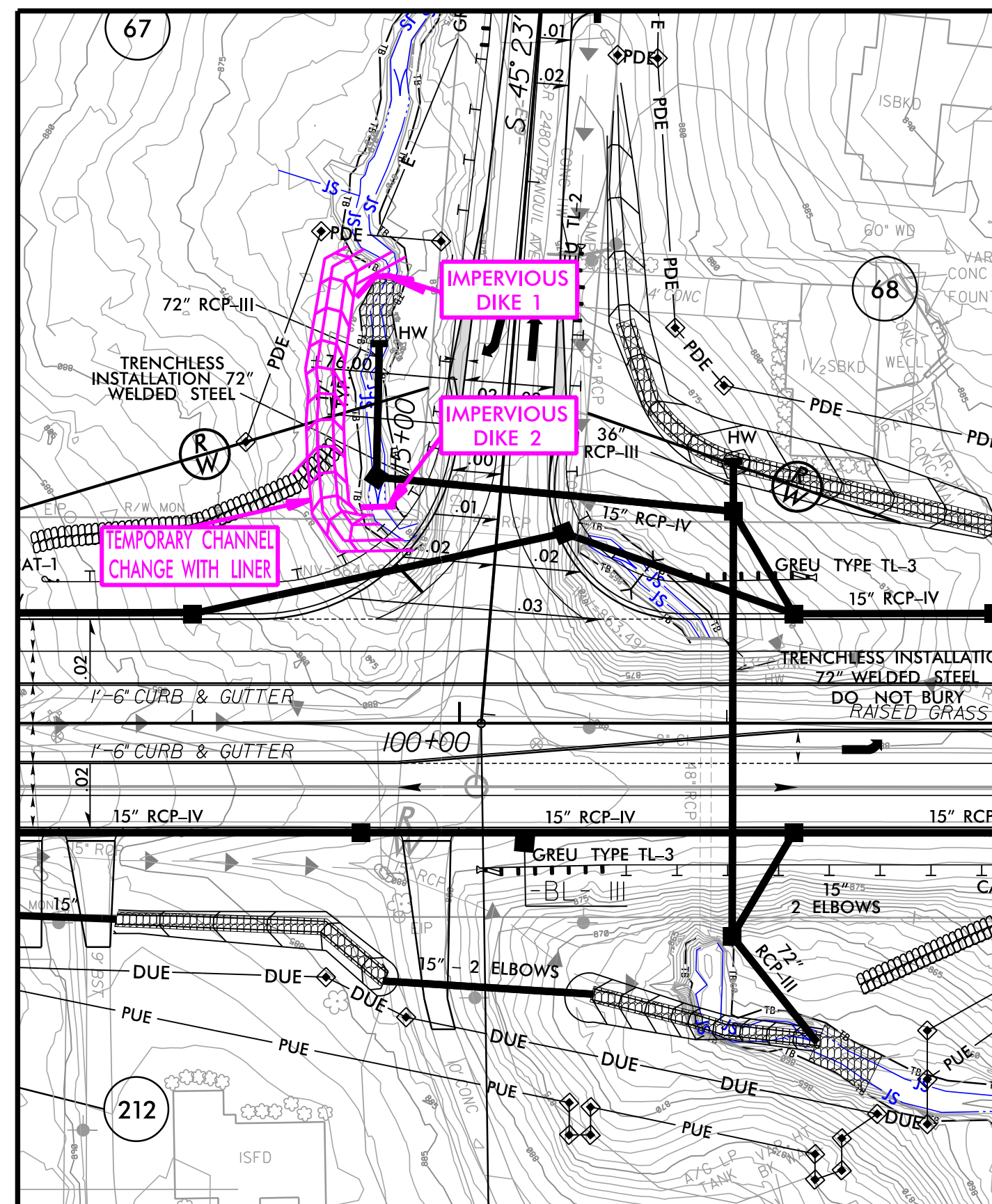


PROJECT REFERENCE NO. R-2577A	SHEET NO. EC-12/CONST.12B
RW SHEET NO.	
ROADWAY DESIGN ENGINEER	HYDRAULICS ENGINEER

CROSS-PIPE INSTALLATION SEQUENCE -Y9- STA. 14+65 PHASE 3



1. CONSTRUCT TRENCH FOR 72" RCP IN EMPTY, RELOCATED STREAM BED.
2. INSTALL 72" RCP-III AND CONSTRUCT HEAD WALL.
3. CONNECT THE DOWNSTREAM END OF 72" RCP TO STRUCTURE 1243.
4. CONSTRUCT CHANNEL IMPROVEMENTS AND TIE JS STREAM TO INLET END OF PROPOSED 72" RCP-III. REMOVE TEMPORARY CHANNEL CHANGE.
5. CONSTRUCT PROPOSED ROADWAY PAVEMENT, SLOPES, AND DITCHES PER ROADWAY PLANS.

8/17/99

I:\11\2023\12\14\Hydraulics\CADD\PSH\ERostonControl\R-2577A_EC_psh12B.dgn