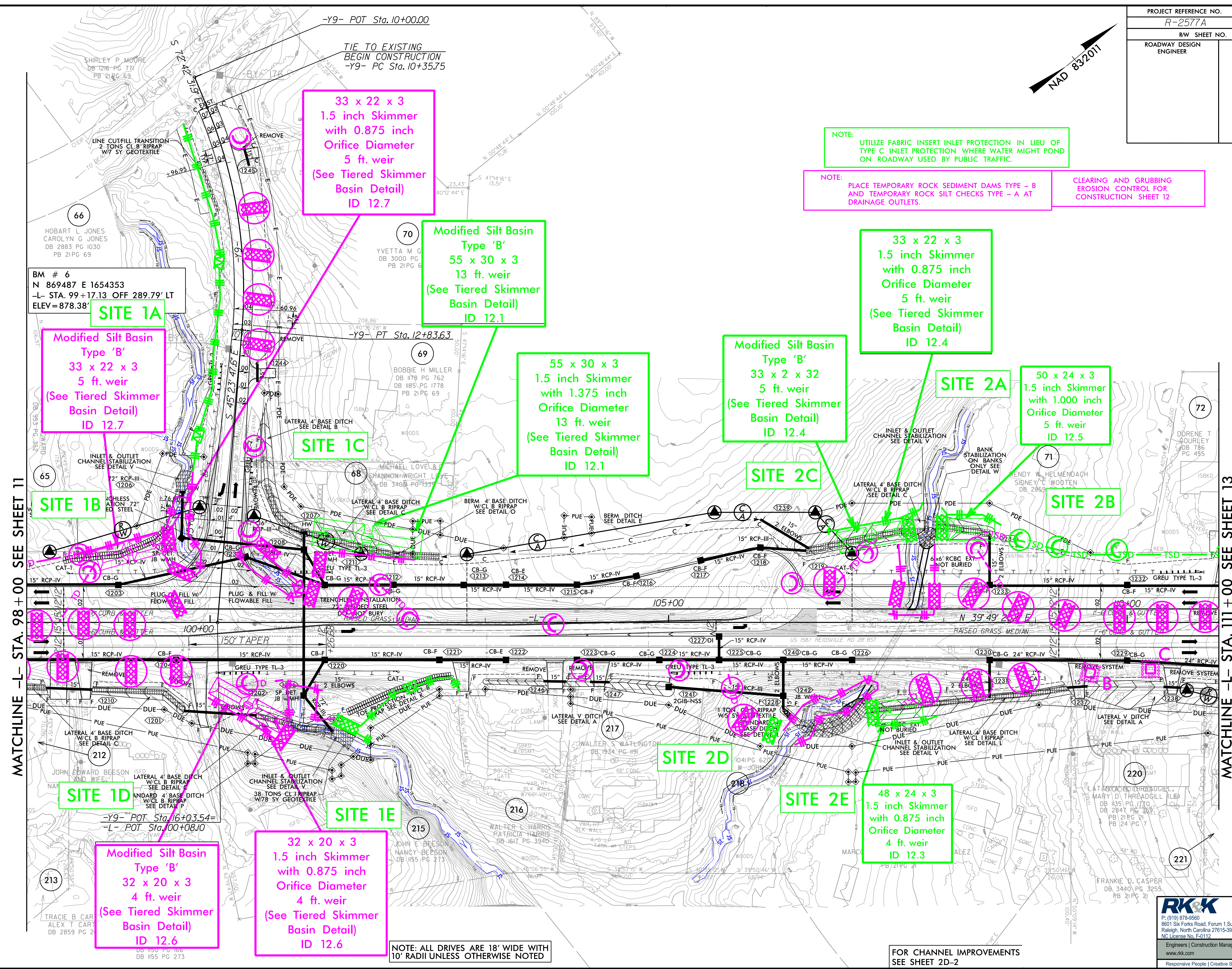


|                                  |                             |
|----------------------------------|-----------------------------|
| PROJECT REFERENCE NO.<br>R-2577A | SHEET NO.<br>EC-12/CONST.12 |
| RW SHEET NO.                     | HYDRAULICS ENGINEER         |
| ROADWAY DESIGN ENGINEER          |                             |



33 x 22 x 3  
1.5 inch Skimmer  
with 0.875 inch  
Orifice Diameter  
5 ft. weir  
(See Tiered Skimmer  
Basin Detail)  
ID 12.7

Modified Silt Basin  
Type 'B'  
55 x 30 x 3  
13 ft. weir  
(See Tiered Skimmer  
Basin Detail)  
ID 12.1

NOTE:  
UTILIZE FABRIC INSERT INLET PROTECTION IN LIEU OF  
TYPE C INLET PROTECTION WHERE WATER MIGHT POND  
ON ROADWAY USED BY PUBLIC TRAFFIC.

NOTE:  
PLACE TEMPORARY ROCK SEDIMENT DAMS TYPE - B  
AND TEMPORARY ROCK SILT CHECKS TYPE - A AT  
DRAINAGE OUTLETS.

CLEARING AND GRUBBING  
EROSION CONTROL FOR  
CONSTRUCTION SHEET 12

BM # 6  
N 869487 E 1654353  
-L- STA. 99+17.13 OFF 289.79' LT  
ELEV = 878.38'

Modified Silt Basin  
Type 'B'  
33 x 22 x 3  
5 ft. weir  
(See Tiered Skimmer  
Basin Detail)  
ID 12.7

55 x 30 x 3  
1.5 inch Skimmer  
with 1.375 inch  
Orifice Diameter  
13 ft. weir  
(See Tiered Skimmer  
Basin Detail)  
ID 12.1

Modified Silt Basin  
Type 'B'  
33 x 2 x 32  
5 ft. weir  
(See Tiered Skimmer  
Basin Detail)  
ID 12.4

33 x 22 x 3  
1.5 inch Skimmer  
with 0.875 inch  
Orifice Diameter  
5 ft. weir  
(See Tiered Skimmer  
Basin Detail)  
ID 12.4

50 x 24 x 3  
1.5 inch Skimmer  
with 1.000 inch  
Orifice Diameter  
5 ft. weir  
ID 12.5

MATCHLINE -L- STA. 98 + 00 SEE SHEET 11

MATCHLINE -L- STA. 111 + 00 SEE SHEET 13

Modified Silt Basin  
Type 'B'  
32 x 20 x 3  
4 ft. weir  
(See Tiered Skimmer  
Basin Detail)  
ID 12.6

32 x 20 x 3  
1.5 inch Skimmer  
with 0.875 inch  
Orifice Diameter  
4 ft. weir  
(See Tiered Skimmer  
Basin Detail)  
ID 12.6

48 x 24 x 3  
1.5 inch Skimmer  
with 0.875 inch  
Orifice Diameter  
4 ft. weir  
ID 12.3

NOTE: ALL DRIVES ARE 18' WIDE WITH  
10' RADII UNLESS OTHERWISE NOTED

FOR CHANNEL IMPROVEMENTS  
SEE SHEET 2D-2

**RK&K**  
P: (919) 378-9550  
6601 Six Forks Road, Forum 1, Suite 700  
Raleigh, North Carolina 27615-3960  
NC License No. F-0112  
Engineers | Construction Managers | Planners | Scientists  
www.rk.com  
Responsive People | Creative Solutions

8/17/99  
12/14/2023  
C:\H:\Projects\Roadway\EC-12\Const\12.dgn  
12/14/2023  
C:\H:\Projects\Roadway\EC-12\Const\12.dgn