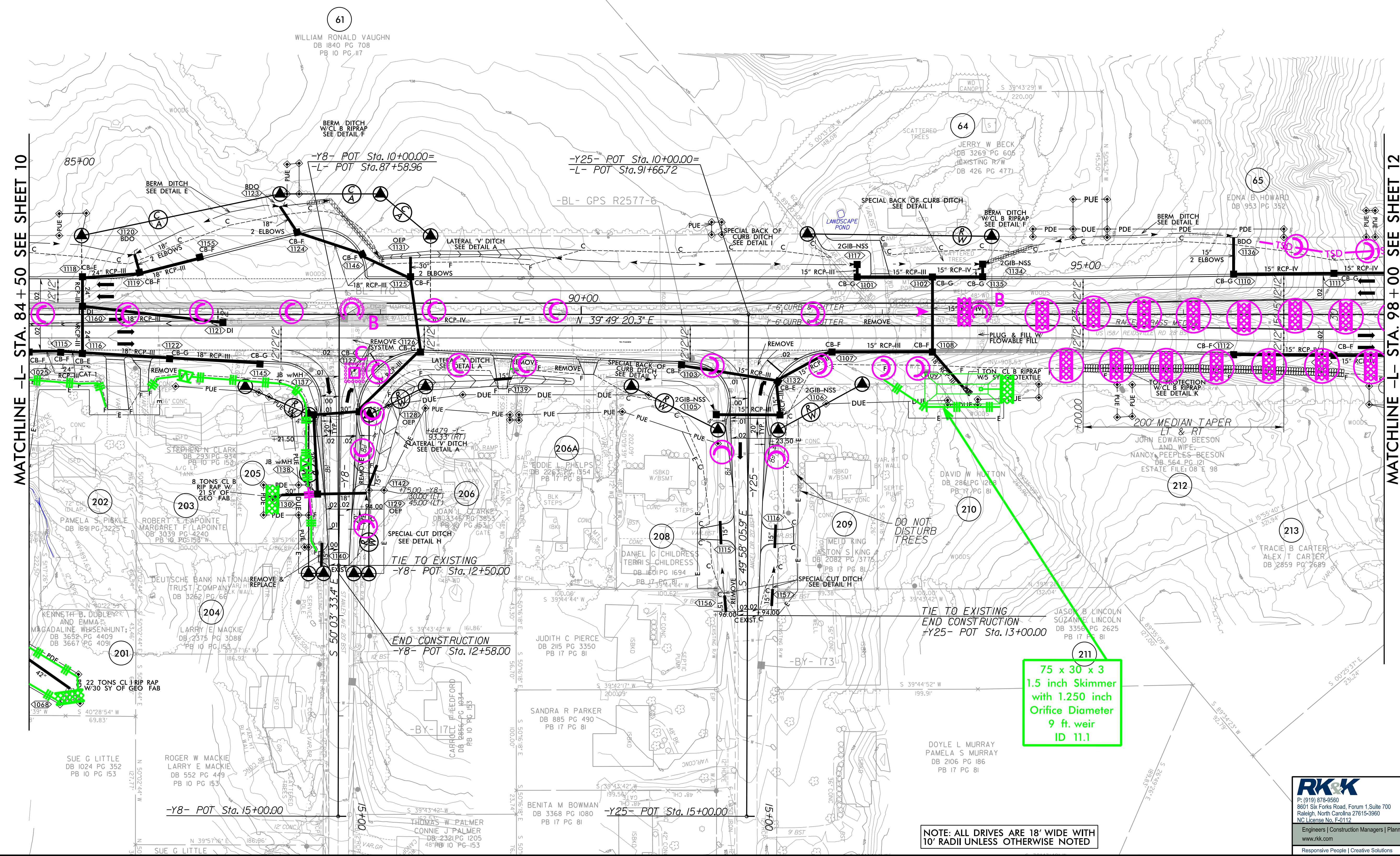
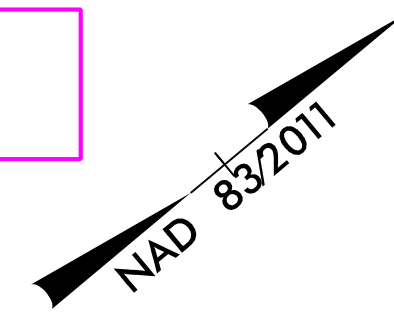


PROJECT REFERENCE NO. R-2577A	SHEET NO. EC-11/CONST.11
RW SHEET NO.	HYDRAULICS ENGINEER
ROADWAY DESIGN ENGINEER	HYDRAULICS ENGINEER

NOTE: PLACE TEMPORARY ROCK SEDIMENT DAMS TYPE - B AND TEMPORARY ROCK SILT CHECKS TYPE - A AT DRAINAGE OUTLETS.

NOTE: UTILIZE FABRIC INSERT INLET PROTECTION IN LIEU OF TYPE C INLET PROTECTION WHERE WATER MIGHT POND ON ROADWAY USED BY PUBLIC TRAFFIC.

CLEARING AND GRUBBING EROSION CONTROL FOR CONSTRUCTION SHEET 11



MATCHLINE -L- STA. 84 + 50 SEE SHEET 10

MATCHLINE -L- STA. 98 + 00 SEE SHEET 12

75 x 30 x 3
1.5 inch Skimmer
with 1.250 inch
Orifice Diameter
9 ft. weir
ID 11.1

NOTE: ALL DRIVES ARE 18' WIDE WITH 10' RADII UNLESS OTHERWISE NOTED

RK&K
 P. (919) 378-9550
 8601 Six Forks Road, Forum 1, Suite 700
 Raleigh, North Carolina 27615-3960
 NC License No. F-0112
 Engineers | Construction Managers | Planners | Scientists
 www.rk.com
 Responsive People | Creative Solutions

8/17/2023 12:14:43 PM C:\DD\PSH\ER\osonControl\NR-2577A_EC_psh11.dgn