

PROJECT REFERENCE NO. R-2577A	SHEET NO. EC-10/CONST.10
RW SHEET NO.	HYDRAULICS ENGINEER
ROADWAY DESIGN ENGINEER	HYDRAULICS ENGINEER

**NOTE:** PLACE TEMPORARY ROCK SEDIMENT DAMS TYPE - B AND TEMPORARY ROCK SILT CHECKS TYPE - A AT DRAINAGE OUTLETS.

**CLEARING AND GRUBBING EROSION CONTROL FOR CONSTRUCTION SHEET 10**

**95 x 45 x 3  
2.0 inch Skimmer  
with 1.750 inch  
Orifice Diameter  
16 ft. weir  
ID 10.1**

**74 x 30 x 3  
1.5 inch Skimmer  
with 1.25 inch  
Orifice Diameter  
17 ft. weir  
ID 10.2**

**NOTE:** UTILIZE FABRIC INSERT INLET PROTECTION IN LIEU OF TYPE C INLET PROTECTION WHERE WATER MIGHT POND ON ROADWAY USED BY PUBLIC TRAFFIC.

**REPLACE CONCRETE DRIVE AS NEEDED TO MATCH EXISTING PATTERN**

**BM # 5  
N 867531 E 1653703  
-L- STA. 79+98.04 OFF 416.92' RT  
ELEV = 916.16'**

**★ PROPOSED TRAFFIC SIGNAL**

**NOTE: ALL DRIVEWAYS ARE 18' UNLESS OTHERWISE NOTED**

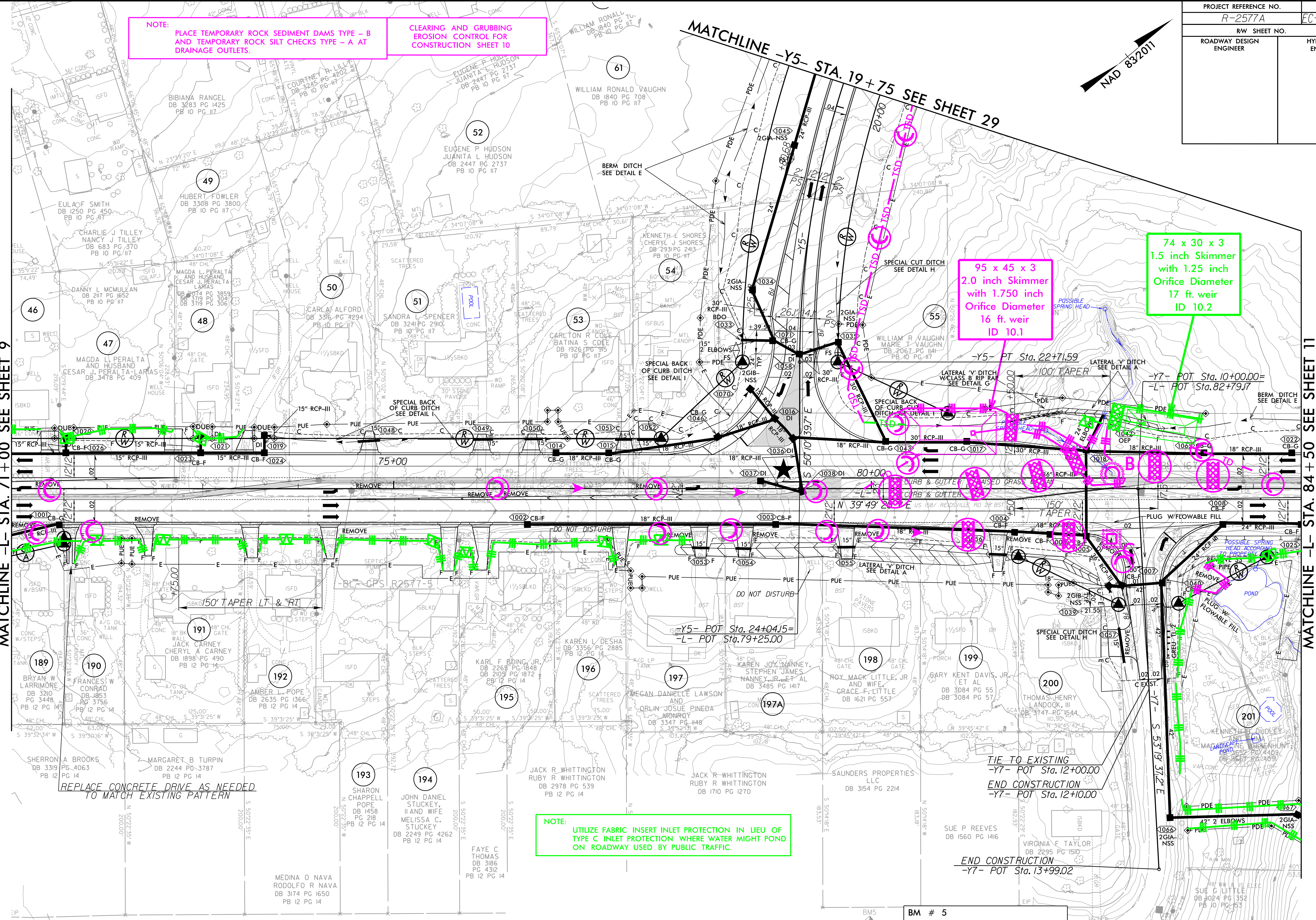
**RK&K**  
P: (919) 378-9550  
8601 Six Forks Road, Forum 1, Suite 700  
Raleigh, North Carolina 27615-3960  
NC License No. F-0112  
Engineers | Construction Managers | Planners | Scientists  
www.rk.com  
Responsive People | Creative Solutions

MANNA BAPTIST CHURCH  
DB 1636 PG 1729

MATCHLINE -L- STA. 71+00 SEE SHEET 9

MATCHLINE -L- STA. 84+50 SEE SHEET 11

MATCHLINE -Y5- STA. 19+75 SEE SHEET 29



8/17/19

C:\Users\jacob\OneDrive\Documents\Projects\2577A\EC-10.dgn