

PROJECT REFERENCE NO. R-2577A	SHEET NO. EC-08/CONST.8
RW SHEET NO.	HYDRAULICS ENGINEER
ROADWAY DESIGN ENGINEER	

NOTE: PLACE TEMPORARY ROCK SEDIMENT DAMS TYPE - B AND TEMPORARY ROCK SILT CHECKS TYPE - A AT DRAINAGE OUTLETS.

CLEARING AND GRUBBING EROSION CONTROL FOR CONSTRUCTION SHEET 8

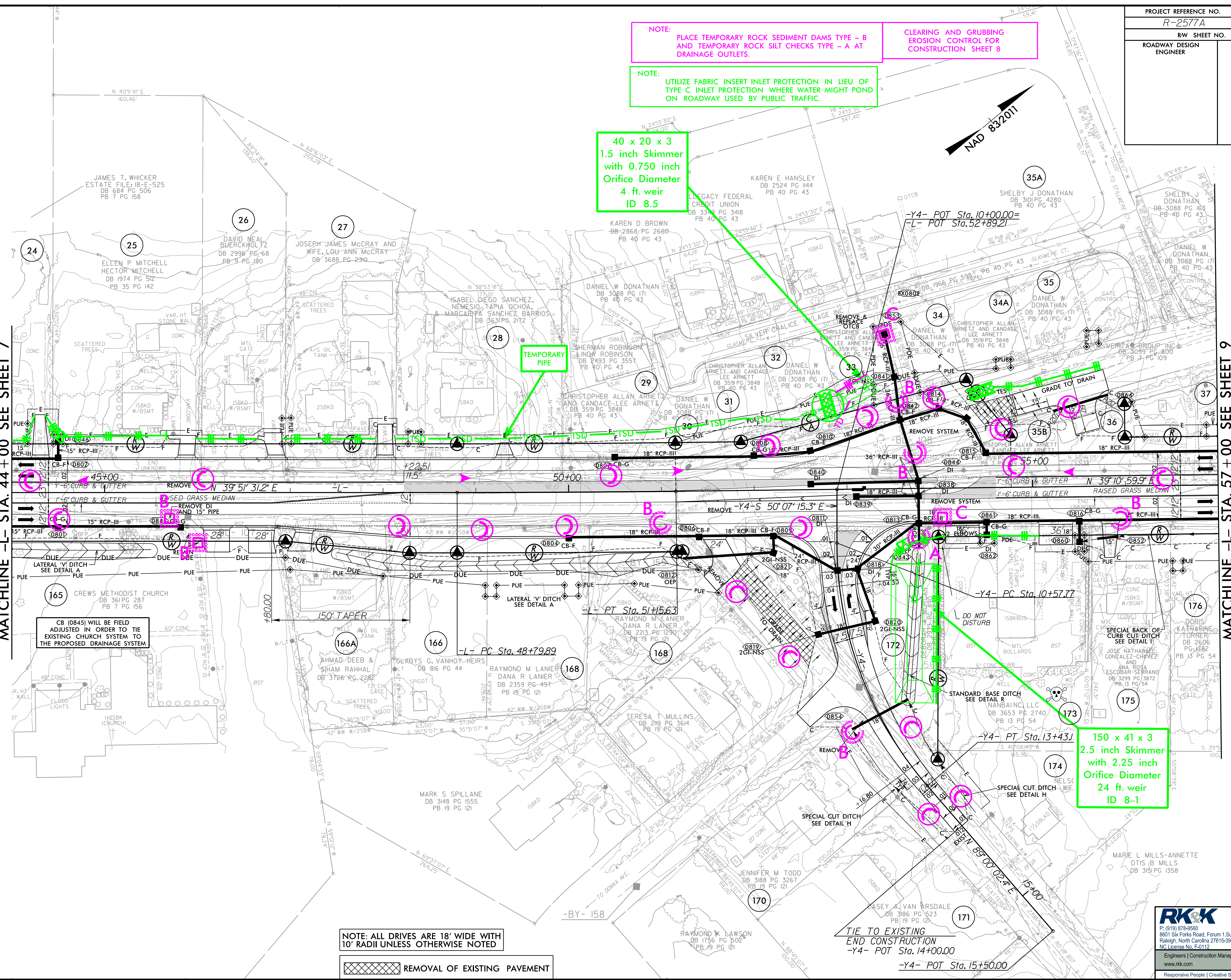
NOTE: UTILIZE FABRIC INSERT INLET PROTECTION IN LIEU OF TYPE C INLET PROTECTION WHERE WATER MIGHT POND ON ROADWAY USED BY PUBLIC TRAFFIC.

40 x 20 x 3
1.5 inch Skimmer
with 0.750 inch
Orifice Diameter
4 ft. weir
ID 8.5

150 x 41 x 3
2.5 inch Skimmer
with 2.25 inch
Orifice Diameter
24 ft. weir
ID 8-1

MATCHLINE -L- STA. 44 + 00 SEE SHEET 7

MATCHLINE -L- STA. 57 + 00 SEE SHEET 9



CB (0845) WILL BE FIELD ADJUSTED IN ORDER TO TIE EXISTING CHURCH SYSTEM TO THE PROPOSED DRAINAGE SYSTEM.

NOTE: ALL DRIVES ARE 18' WIDE WITH 10' RADII UNLESS OTHERWISE NOTED

REMOVAL OF EXISTING PAVEMENT

TIE TO EXISTING END CONSTRUCTION
-Y4- POT Sta. 14+00.00
-Y4- POT Sta. 15+50.00

RK&K
P: (919) 378-9550
8601 Six Forks Road, Forum 1, Suite 700
Raleigh, North Carolina 27615-3960
NC License No. F-0112
Engineers | Construction Managers | Planners | Scientists
www.rk.com
Responsive People | Creative Solutions

8/17/99

C:\Users\jch\Documents\CADD\PSH\ER-osonContr\01\NR-2577A_EC_psh08.dgn