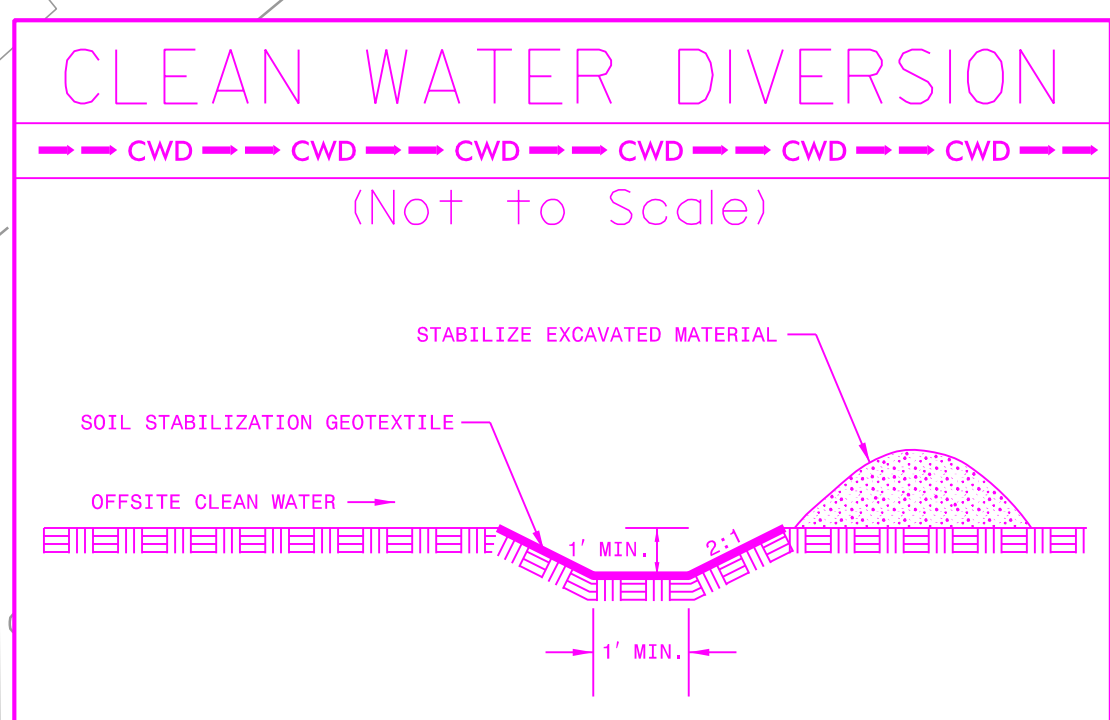
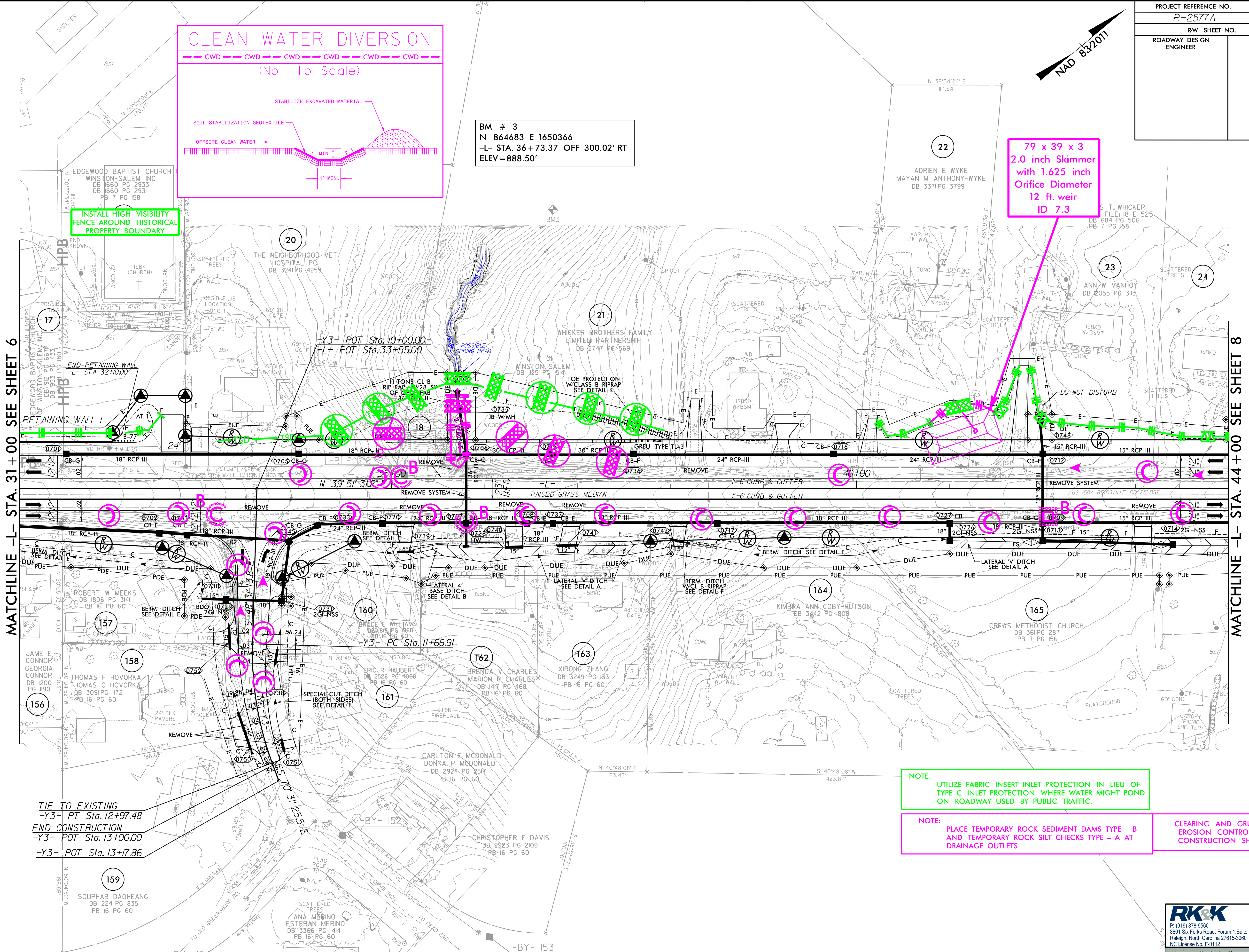


PROJECT REFERENCE NO. R-2577A	SHEET NO. EC-07/CONST.7
RW SHEET NO.	HYDRAULICS ENGINEER
ROADWAY DESIGN ENGINEER	



BM # 3
N 864683 E 1650366
-L- STA. 36+73.37 OFF 300.02' RT
ELEV = 888.50'

79 x 39 x 3
2.0 inch Skimmer
with 1.625 inch
Orifice Diameter
12 ft. weir
ID 7.3



MATCHLINE -L- STA. 31+00 SEE SHEET 6

MATCHLINE -L- STA. 44+00 SEE SHEET 8

TIE TO EXISTING
-Y3- PT Sta. 12+97.48
END CONSTRUCTION
-Y3- POT Sta. 13+00.00
-Y3- POT Sta. 13+17.86

NOTE:
UTILIZE FABRIC INSERT INLET PROTECTION IN LIEU OF
TYPE C INLET PROTECTION WHERE WATER MIGHT POND
ON ROADWAY USED BY PUBLIC TRAFFIC.

NOTE:
PLACE TEMPORARY ROCK SEDIMENT DAMS TYPE - B
AND TEMPORARY ROCK SILT CHECKS TYPE - A AT
DRAINAGE OUTLETS.

CLEARING AND GRUBBING
EROSION CONTROL FOR
CONSTRUCTION SHEET 7

NOTE: ALL DRIVES ARE 18' WIDE WITH
10' RADII UNLESS OTHERWISE NOTED

RK&K
P: (919) 378-9550
6601 Six Forks Road, Forum 1, Suite 700
Raleigh, North Carolina 27615-3960
NC License No. F-0112
Engineers | Construction Managers | Planners | Scientists
www.rk.com
Responsive People | Creative Solutions

8/17/2023 12:14:44 PM C:\ADD\PSH\ERosionControl\N-2577A-EC-ps07.dgn