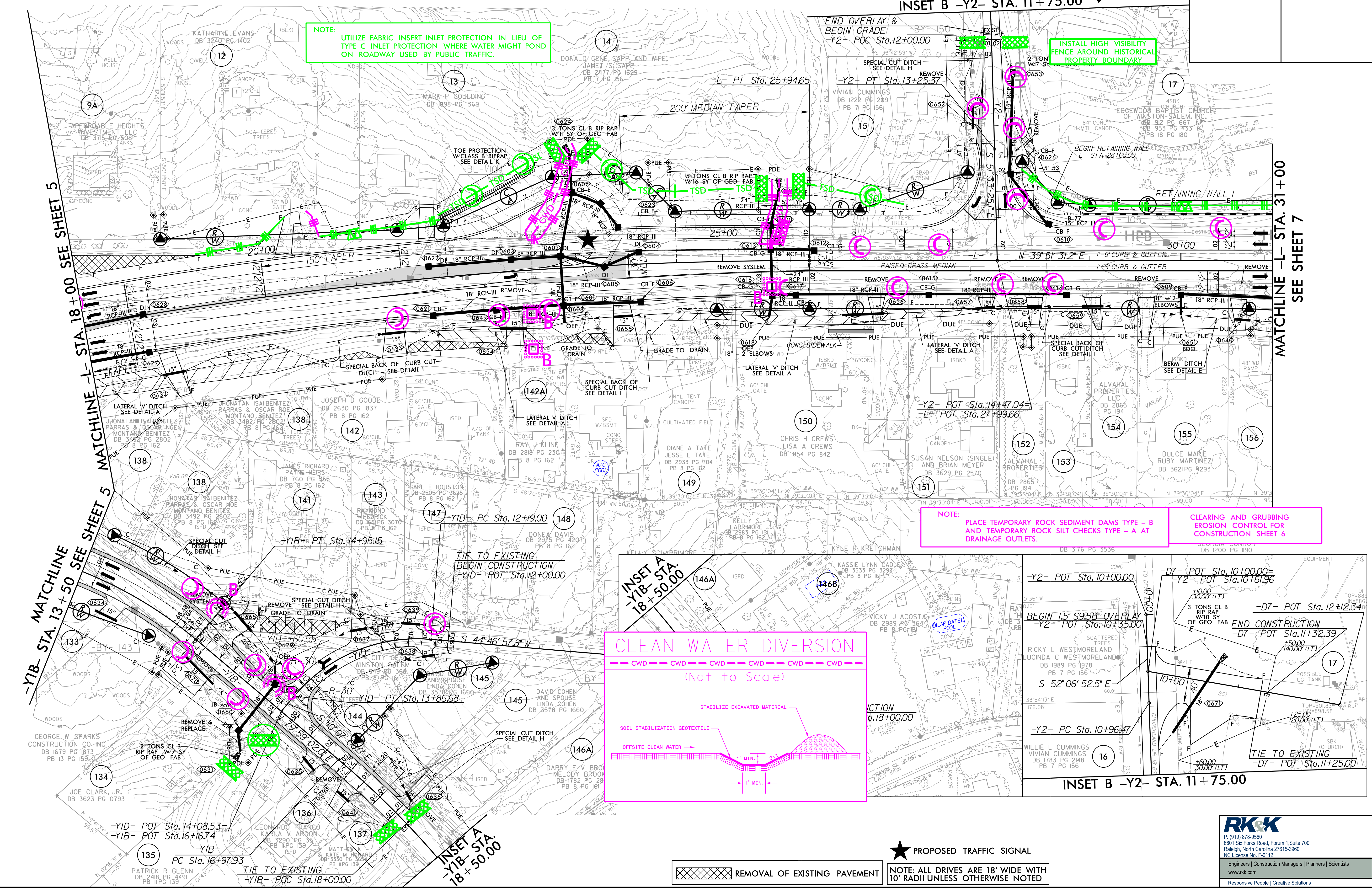


PROJECT REFERENCE NO. R-2577A	SHEET NO. EC-06/CONST.6
RW SHEET NO. ROADWAY DESIGN ENGINEER	HYDRAULICS ENGINEER

917.50' E  
92.04'

NAD 83/2011

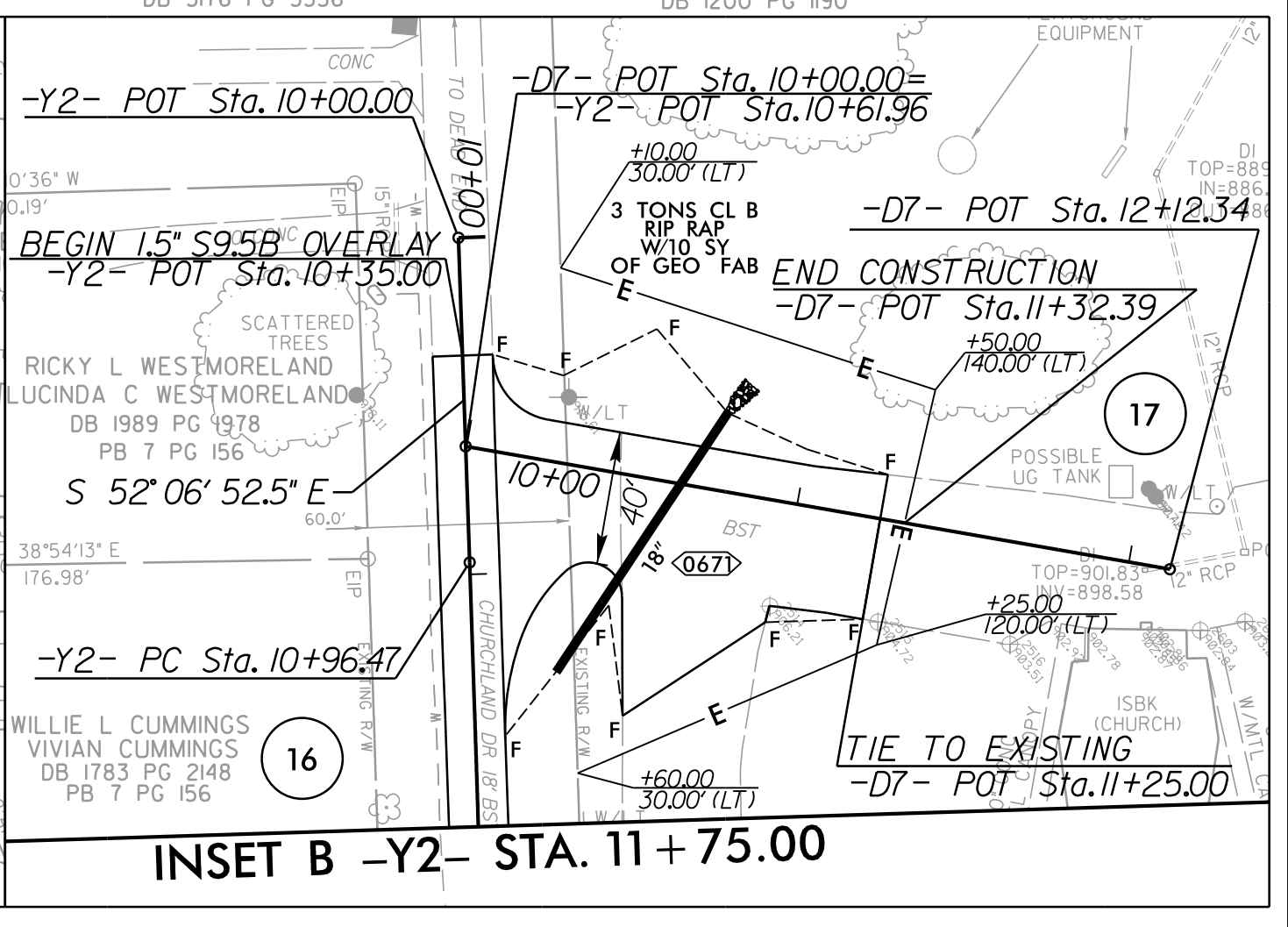


**NOTE:**  
UTILIZE FABRIC INSERT INLET PROTECTION IN LIEU OF TYPE C INLET PROTECTION WHERE WATER MIGHT POND ON ROADWAY USED BY PUBLIC TRAFFIC.

**INSTALL HIGH VISIBILITY FENCE AROUND HISTORICAL PROPERTY BOUNDARY**

**NOTE:** PLACE TEMPORARY ROCK SEDIMENT DAMS TYPE - B AND TEMPORARY ROCK SILT CHECKS TYPE - A AT DRAINAGE OUTLETS.

**CLEARING AND GRUBBING EROSION CONTROL FOR CONSTRUCTION SHEET 6**



REMOVAL OF EXISTING PAVEMENT

★ PROPOSED TRAFFIC SIGNAL  
NOTE: ALL DRIVES ARE 18' WIDE WITH 10' RADII UNLESS OTHERWISE NOTED

**RK&K**  
P: (919) 378-9550  
8601 Six Forks Road, Forum 1, Suite 700  
Raleigh, North Carolina 27615-3960  
NC License No. F-0112  
www.rk.com  
Engineers | Construction Managers | Planners | Scientists  
Responsive People | Creative Solutions

8/17/19  
C:\Users\pshh\OneDrive\Documents\Projects\2577A\_EC-06.dgn  
12/14/2023 10:41:14 AM