

PROJECT REFERENCE NO.	SHEET NO.
R-2577A	EC-05/CONST.5
RW SHEET NO.	HYDRAULICS ENGINEER
ROADWAY DESIGN ENGINEER	

DB 3619 PG 236
CONDO PLAT 8 PG 136

ROBERT STEWART
THREE TWO ENCHANTED
RAINBOW TRAIL TRUST
DB 1337 PG 1298
CONDO PLAT 8 PG 136

9A
AFFORDABLE HEIGHTS
INVESTMENT, LLC
DB 3715 PG 500

138
SPECIAL CUT DITCH
SEE DETAIL H

139
TYCO ELECTRONICS CORPORATION
DB 2163 PG 1687
DB 932 PG 418
DB 694 PG 335

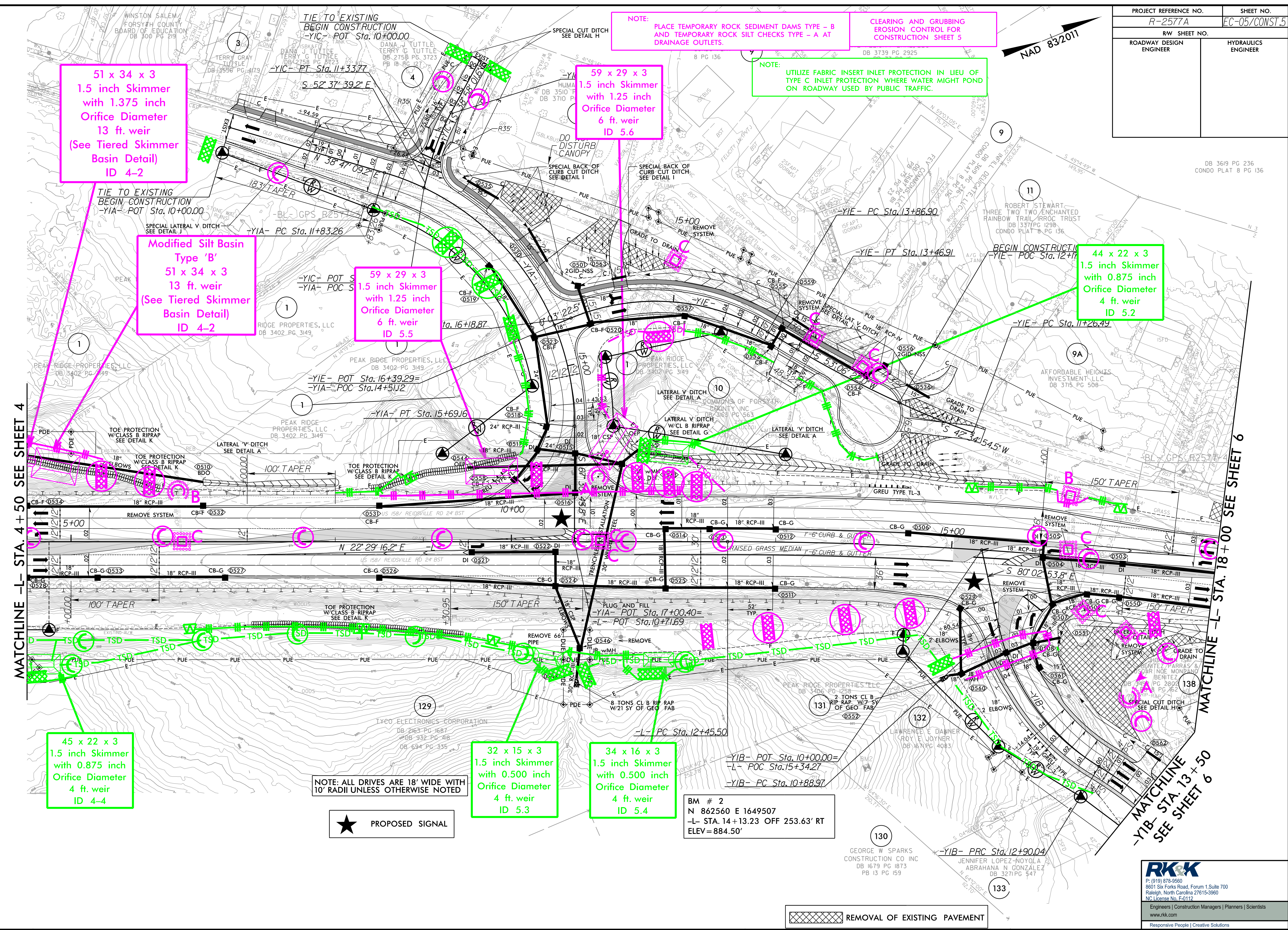
130
GEORGE W SPARKS
CONSTRUCTION CO INC
DB 1679 PG 1873
PB 13 PG 159

133
JENNIFER LOPEZ-NOYOLA
ABRAHAMA N GONZALEZ
DB 3271 PG 547

RK&K
P: (919) 378-9550
8601 Six Forks Road, Forum 1, Suite 700
Raleigh, North Carolina 27615-3960
NC License No. F-0112

Engineers | Construction Managers | Planners | Scientists
www.rk.com
Responsive People | Creative Solutions

8/17/19



51 x 34 x 3
1.5 inch Skimmer
with 1.375 inch
Orifice Diameter
13 ft. weir
(See Tiered Skimmer
Basin Detail)
ID 4-2

Modified Silt Basin
Type 'B'
51 x 34 x 3
13 ft. weir
(See Tiered Skimmer
Basin Detail)
ID 4-2

59 x 29 x 3
1.5 inch Skimmer
with 1.25 inch
Orifice Diameter
6 ft. weir
ID 5.5

59 x 29 x 3
1.5 inch Skimmer
with 1.25 inch
Orifice Diameter
6 ft. weir
ID 5.6

44 x 22 x 3
1.5 inch Skimmer
with 0.875 inch
Orifice Diameter
4 ft. weir
ID 5.2

45 x 22 x 3
1.5 inch Skimmer
with 0.875 inch
Orifice Diameter
4 ft. weir
ID 4-4

32 x 15 x 3
1.5 inch Skimmer
with 0.500 inch
Orifice Diameter
4 ft. weir
ID 5.3

34 x 16 x 3
1.5 inch Skimmer
with 0.500 inch
Orifice Diameter
4 ft. weir
ID 5.4

NOTE: PLACE TEMPORARY ROCK SEDIMENT DAMS TYPE - B AND TEMPORARY ROCK SILT CHECKS TYPE - A AT DRAINAGE OUTLETS.

CLEARING AND GRUBBING EROSION CONTROL FOR CONSTRUCTION SHEET 5

NOTE: UTILIZE FABRIC INSERT INLET PROTECTION IN LIEU OF TYPE C INLET PROTECTION WHERE WATER MIGHT POND ON ROADWAY USED BY PUBLIC TRAFFIC.

NOTE: ALL DRIVES ARE 18' WIDE WITH 10' RADII UNLESS OTHERWISE NOTED

★ PROPOSED SIGNAL

BM # 2
N 862560 E 1649507
-L- STA. 14+13.23 OFF 253.63' RT
ELEV=884.50'

REMOVAL OF EXISTING PAVEMENT

8/17/19
C:\Users\jch\OneDrive\Documents\Projects\2577A\EC-05\Const\5.dgn