

6/2/09

**Location and Surveys**

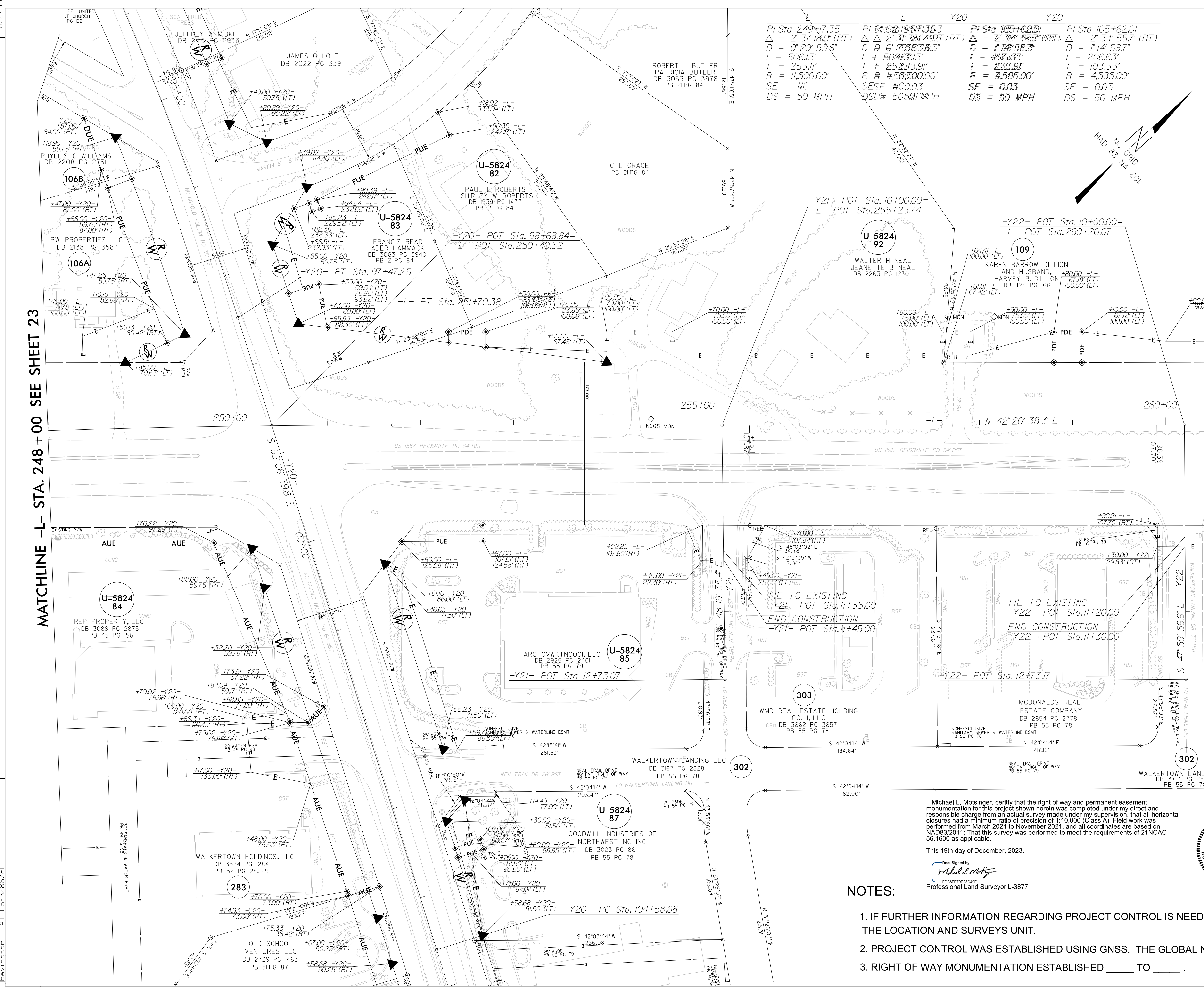
PROJECT SURVEYOR

DOCUMENT NOT CONSIDERED FINAL  
UNLESS ALL SIGNATURES COMPLETED

REVISIONS

MATCHLINE -L- STA. 248 + 00 SEE SHEET 23

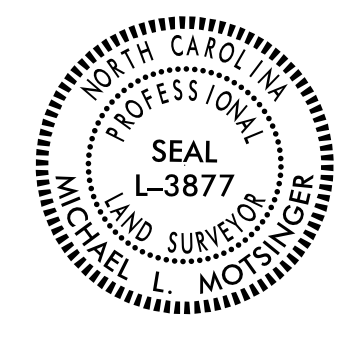
MATCHLINE -L- STA. 261 + 00 SEE SHEET 25



I, Michael L. Molsinger, certify that the right of way and permanent easement monumentation for this project shown herein was completed under my direct and responsible charge from an actual survey made under my supervision; that all horizontal closures had a minimum ratio of precision of 1:10,000 (Class A). Field work was performed from March 2021 to November 2021, and all coordinates are based on NAD83/2011; That this survey was performed to meet the requirements of 21NCAC 56.1600 as applicable.

This 19th day of December, 2023.

Documented by:  
  
 Professional Land Surveyor L-3877



**NOTES:**

1. IF FURTHER INFORMATION REGARDING PROJECT CONTROL IS NEEDED PLEASE CONTACT THE LOCATION AND SURVEYS UNIT.
2. PROJECT CONTROL WAS ESTABLISHED USING GNSS, THE GLOBAL NAVIGATION SATELLITE SYSTEM.
3. RIGHT OF WAY MONUMENTATION ESTABLISHED \_\_\_\_\_ TO \_\_\_\_\_.

S:\Projects\2023\1430\WinstonRuths Computer\Revel\2577A\Files Pulled 2023-12-13\N-2577A\_rdy\_psh24.dgn  
 AT LS-3286081