

6/2/09

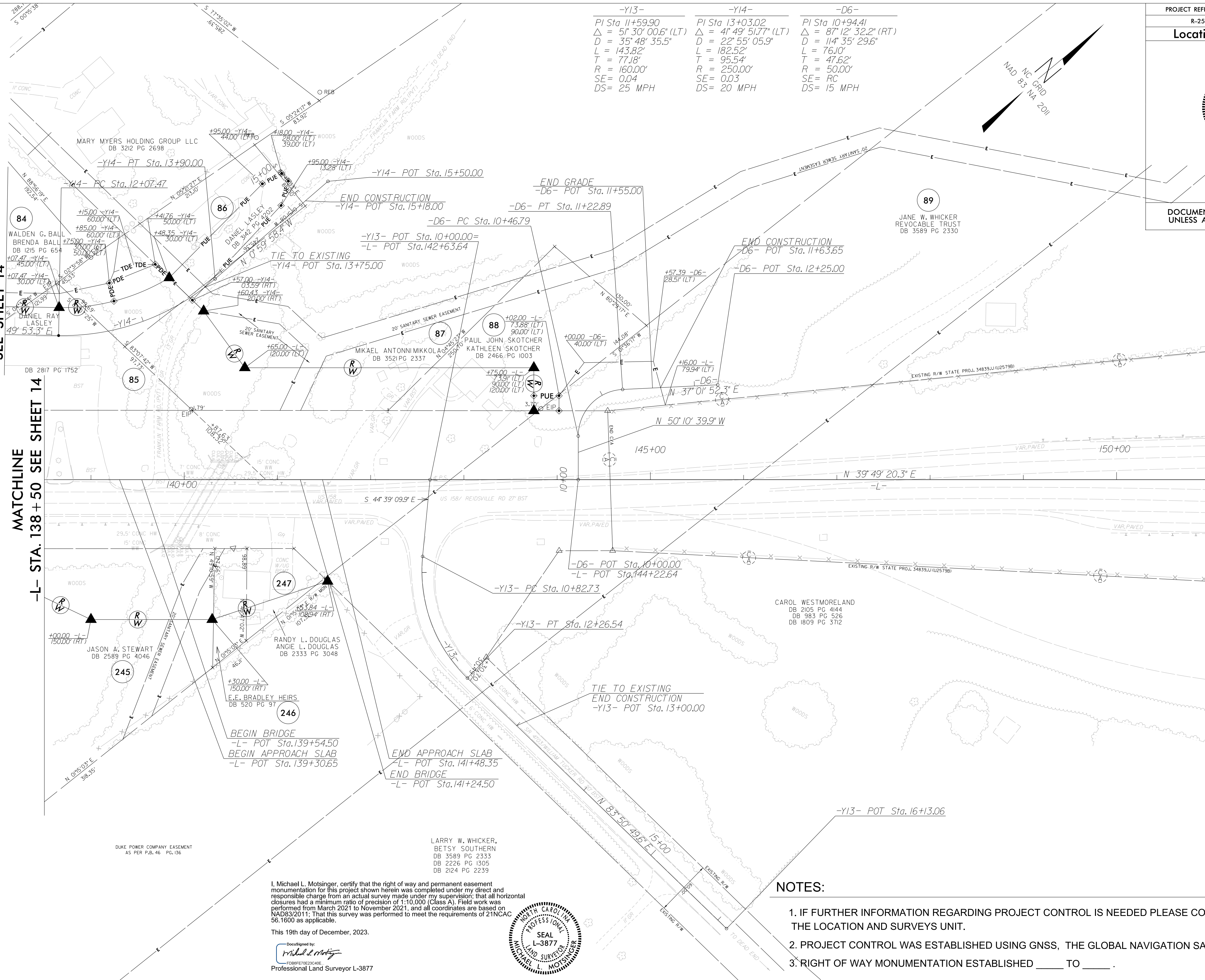
S:\Projects\2023\10\23\2023-12-13\Right of Way\ControlSheets\231214\F1Files Pulled 2023-12-13\X-2577A_rdy_psh15.dgn
 S:\Users\m103\OneDrive\Professional Land Surveyor\2023-12-13\Right of Way\ControlSheets\231214\F1Files Pulled 2023-12-13\X-2577A_rdy_psh15.dgn
 AT LS-3286081

REVISIONS

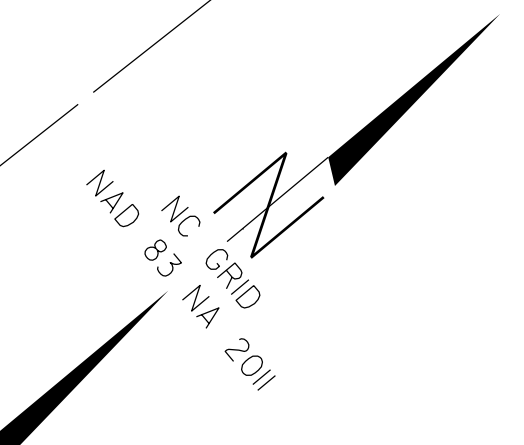
MATCHLINE
 -Y14- STA. 11 + 50
 SEE SHEET 14

MATCHLINE
 -L- STA. 138 + 50 SEE SHEET 14

MATCHLINE -L- STA. 151 + 00 SEE SHEET 16



-Y13-	-Y14-	-D6-
PI Sta 11+59.90	PI Sta 13+03.02	PI Sta 10+94.41
$\Delta = 51' 30" 00.6" (LT)$	$\Delta = 41' 49" 51.77" (LT)$	$\Delta = 87' 12" 32.2" (RT)$
$D = 35' 48" 35.5"$	$D = 22' 55" 05.9"$	$D = 114' 35' 29.6"$
$L = 143.82'$	$L = 182.52'$	$L = 76.10'$
$T = 77.18'$	$T = 95.54'$	$T = 47.62'$
$R = 160.00'$	$R = 250.00'$	$R = 50.00'$
$SE = 0.04$	$SE = 0.03$	$SE = RC$
$DS = 25 MPH$	$DS = 20 MPH$	$DS = 15 MPH$



PROJECT REFERENCE NO. R-2577A SHEET NO. RW15

Location and Surveys

PROJECT SURVEYOR

STATE OF NORTH CAROLINA
 PROFESSIONAL
 SEAL
 L-3877
 MICHAEL L. MOLSINGER

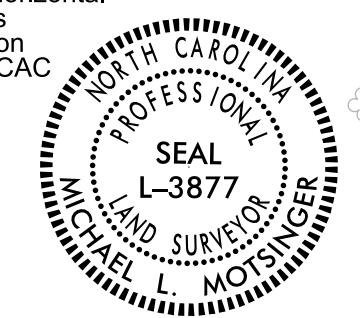
DOCUMENT NOT CONSIDERED FINAL UNLESS ALL SIGNATURES COMPLETED

I, Michael L. Molsinger, certify that the right of way and permanent easement monumentation for this project shown herein was completed under my direct and responsible charge from an actual survey made under my supervision; that all horizontal closures had a minimum ratio of precision of 1:10,000 (Class A). Field work was performed from March 2021 to November 2021, and all coordinates are based on NAD83/2011. That this survey was performed to meet the requirements of 21NCAC 56.1600 as applicable.

This 19th day of December, 2023.

DocuSigned by:

 F088F02E23CA4E
 Professional Land Surveyor L-3877



NOTES:

1. IF FURTHER INFORMATION REGARDING PROJECT CONTROL IS NEEDED PLEASE CONTACT THE LOCATION AND SURVEYS UNIT.
2. PROJECT CONTROL WAS ESTABLISHED USING GNSS, THE GLOBAL NAVIGATION SATELLITE SYSTEM.
3. RIGHT OF WAY MONUMENTATION ESTABLISHED ____ TO ____.