

5/28/24

-Y4-

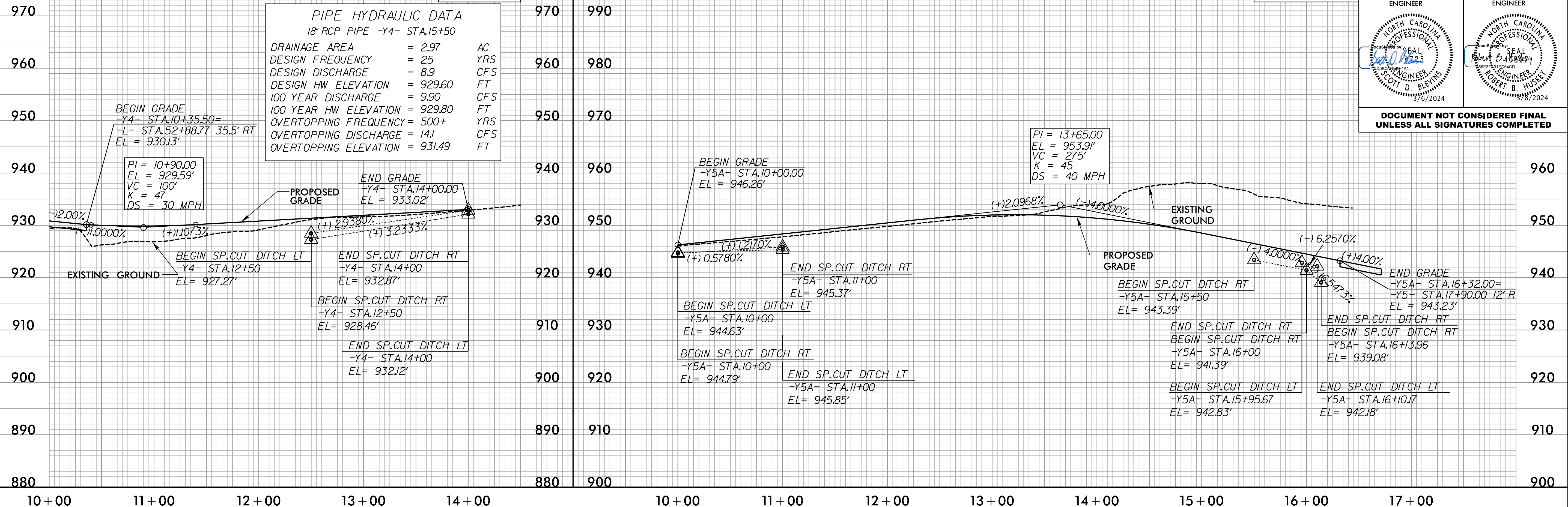
-Y5A-

| | |
|----------------------------------|---------------------|
| PROJECT REFERENCE NO. R-2577A | SHEET NO. 44 |
| ROADWAY DESIGN ENGINEER | HYDRAULICS ENGINEER |
| | |

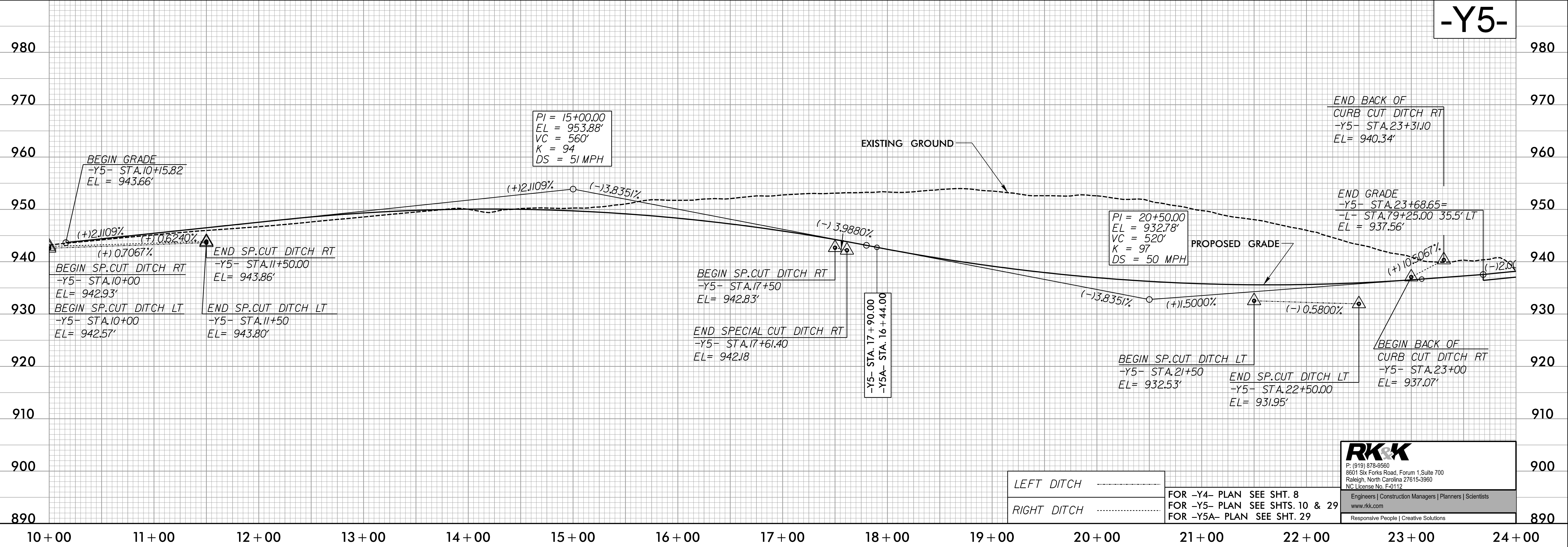
DOCUMENT NOT CONSIDERED FINAL UNLESS ALL SIGNATURES COMPLETED

PIPE HYDRAULIC DATA
18" RCP PIPE -Y4- STA.15+50

| | | |
|-----------------------|----------|-----|
| DRAINAGE AREA | = 2.97 | AC |
| DESIGN FREQUENCY | = 25 | YRS |
| DESIGN DISCHARGE | = 8.9 | CFS |
| DESIGN HW ELEVATION | = 929.60 | FT |
| 100 YEAR DISCHARGE | = 9.90 | CFS |
| 100 YEAR HW ELEVATION | = 929.80 | FT |
| OVERTOPPING FREQUENCY | = 500+ | YRS |
| OVERTOPPING DISCHARGE | = 14J | CFS |
| OVERTOPPING ELEVATION | = 931.49 | FT |



-Y5-



LEFT DITCH
RIGHT DITCH

FOR -Y4- PLAN SEE SHT. 8
FOR -Y5- PLAN SEE SHTS. 10 & 29
FOR -Y5A- PLAN SEE SHT. 29

RK&K
P: (919) 878-9560
8801 Six Forks Road, Forum 1, Suite 700
Raleigh, North Carolina 27615-3960
NC License No. F-0112

Engineers | Construction Managers | Planners | Scientists
www.rkk.com
Responsive People | Creative Solutions

12/7/2023 R:\Projects\2577A\Drawings\RDY\p144.dgn