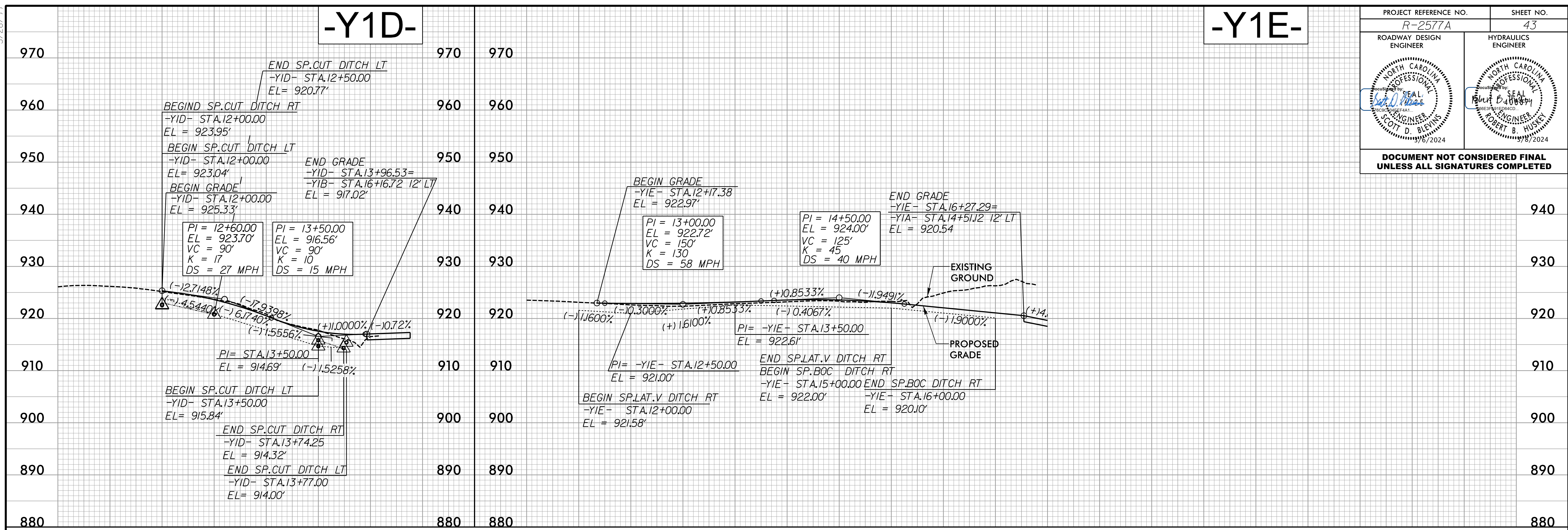


-Y1D-

-Y1E-

| | |
|---|------------------------|
| PROJECT REFERENCE NO. R-2577A | SHEET NO. 43 |
| ROADWAY DESIGN ENGINEER | HYDRAULICS ENGINEER |
| | |

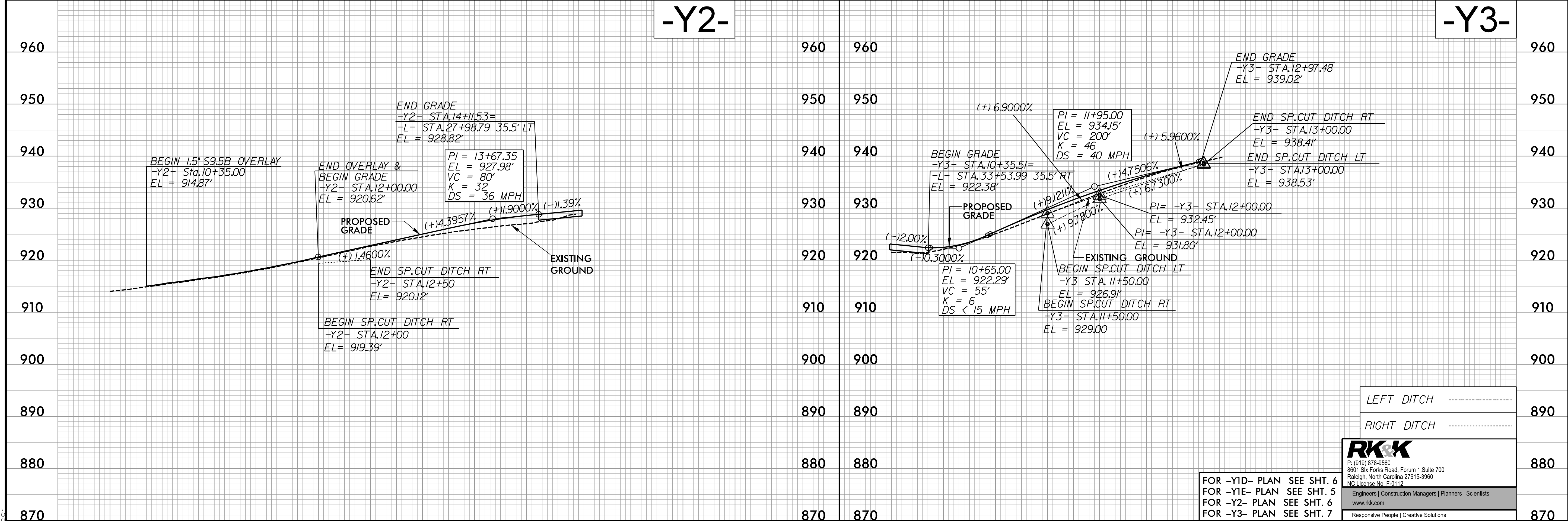
DOCUMENT NOT CONSIDERED FINAL UNLESS ALL SIGNATURES COMPLETED



11+00 12+00 13+00 14+00 12+00 13+00 14+00 15+00 15+00

-Y2-

-Y3-



10+00 11+00 12+00 13+00 14+00 15+00 10+00 11+00 12+00 13+00 14+00

| | |
|-------------|-------|
| LEFT DITCH | ----- |
| RIGHT DITCH | ----- |

RK&K
 P: (919) 878-8580
 8801 Six Forks Road, Forum 1, Suite 700
 Raleigh, North Carolina 27615-3960
 NC License No. F-0112
Engineers | Construction Managers | Planners | Scientists
www.rkk.com
Responsive People | Creative Solutions

FOR -Y1D- PLAN SEE SHT. 6
 FOR -Y1E- PLAN SEE SHT. 5
 FOR -Y2- PLAN SEE SHT. 6
 FOR -Y3- PLAN SEE SHT. 7