

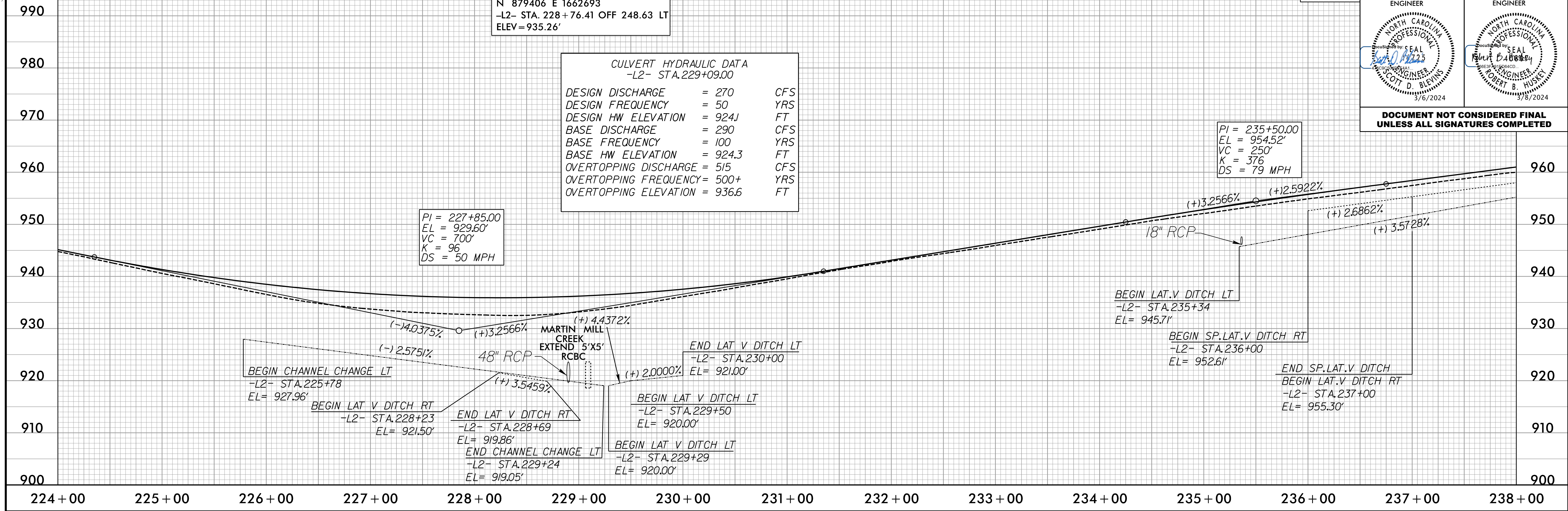
**-L2-**

PROJECT REFERENCE NO. R-2577A	SHEET NO. 39
ROADWAY DESIGN ENGINEER 	HYDRAULICS ENGINEER 
<b>DOCUMENT NOT CONSIDERED FINAL UNLESS ALL SIGNATURES COMPLETED</b>	

BM # 12  
N 879406 E 1662693  
-L2- STA. 228+76.41 OFF 248.63 LT  
ELEV = 935.26'

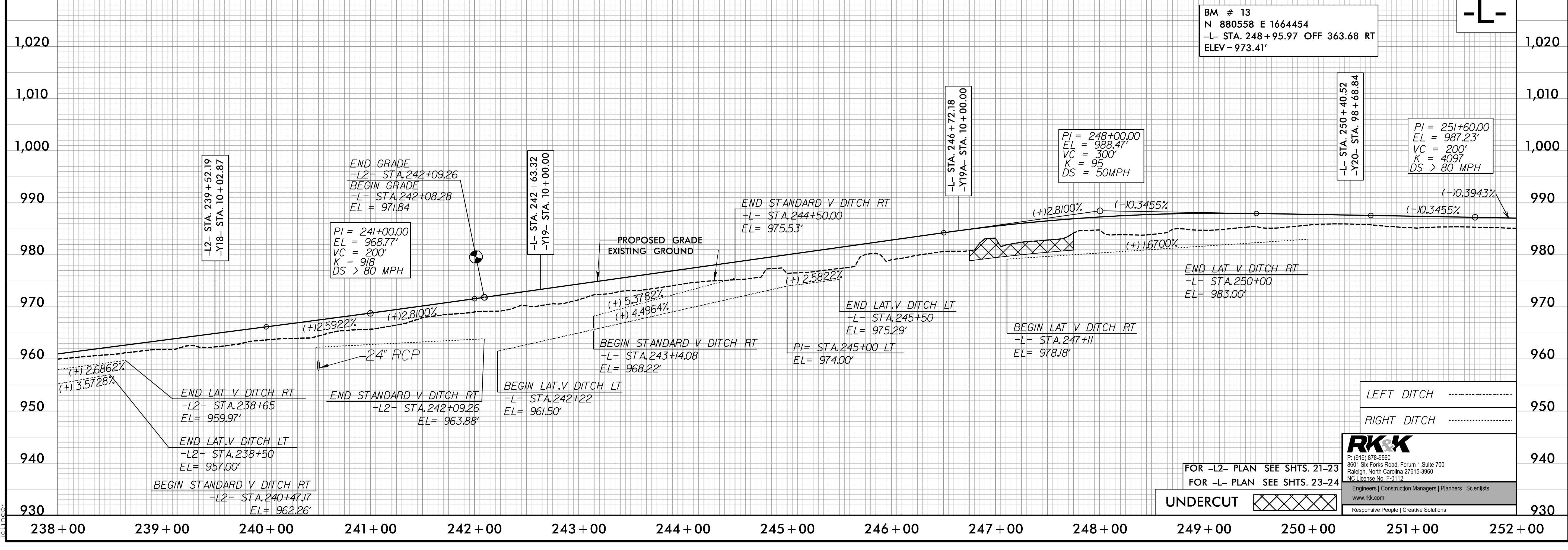
CULVERT HYDRAULIC DATA  
-L2- STA. 229+09.00

DESIGN DISCHARGE	= 270	CFS
DESIGN FREQUENCY	= 50	YRS
DESIGN HW ELEVATION	= 9241	FT
BASE DISCHARGE	= 290	CFS
BASE FREQUENCY	= 100	YRS
BASE HW ELEVATION	= 924.3	FT
OVERTOPPING DISCHARGE	= 515	CFS
OVERTOPPING FREQUENCY	= 500+	YRS
OVERTOPPING ELEVATION	= 936.6	FT



BM # 13  
N 880558 E 1664454  
-L- STA. 248+95.97 OFF 363.68 RT  
ELEV = 973.41'

**-L-**



**RK&K**  
P: (919) 878-8560  
8801 Six Forks Road, Forum 1, Suite 700  
Raleigh, North Carolina 27615-3960  
NC License No. F-0112  
Engineers | Construction Managers | Planners | Scientists  
www.rkk.com  
Responsive People | Creative Solutions

FOR -L2- PLAN SEE SHTS. 21-23  
FOR -L- PLAN SEE SHTS. 23-24  
**UNDERCUT**

I:\Projects\2023\Projects\2577A\R-2577A-Rdy\_p139.dgn  
 1/2/2024 11:00 AM