

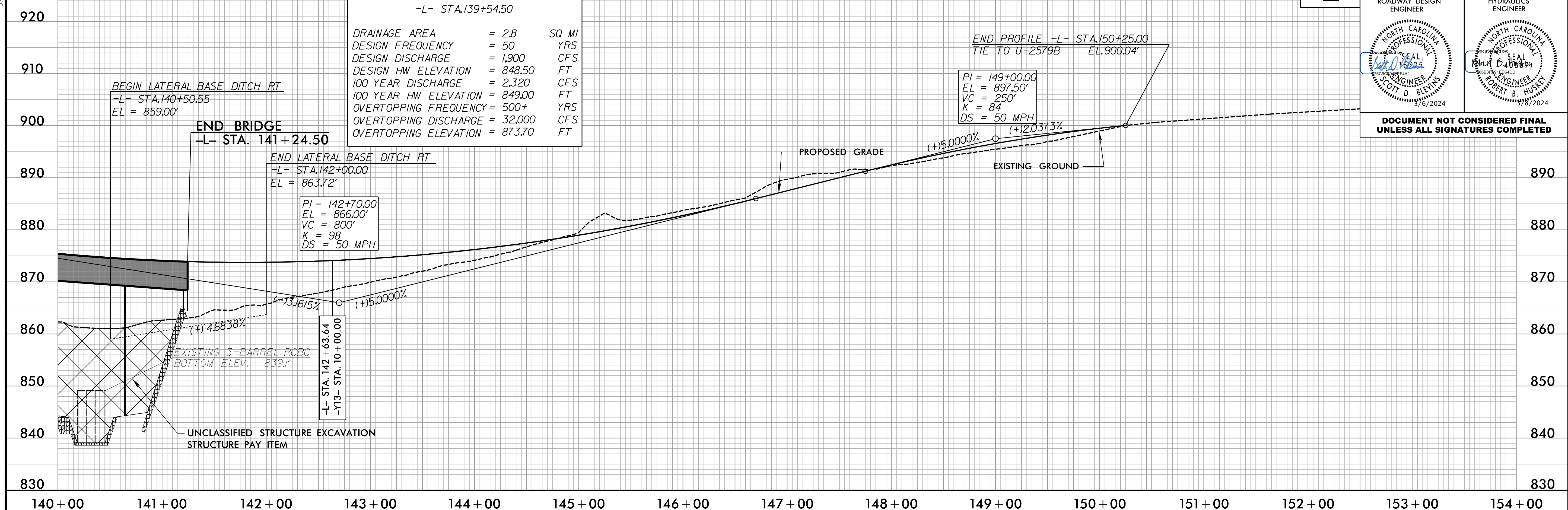
5/28/24

-L-

|   |   |
|---|---|
| PROJECT REFERENCE NO.<br>R-2577A              | SHEET NO.<br>36                           |
| ROADWAY DESIGN ENGINEER<br><i>[Signature]</i> | HYDRAULICS ENGINEER<br><i>[Signature]</i> |
| SCOTT D. BLEVINS<br>7/6/2024                  | ROBERT B. HUSKEY<br>7/8/2024              |

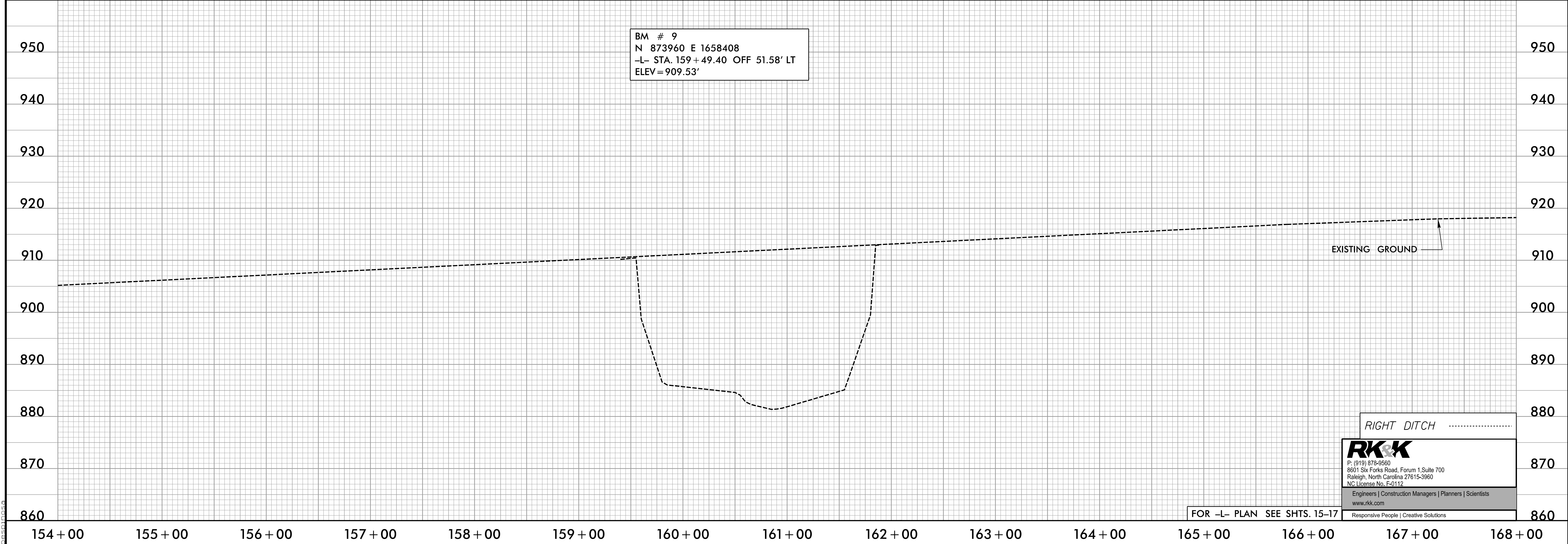
**BRIDGE HYDRAULIC DATA**  
-L- STA.139+54.50

|                       |          |       |
|-----------------------|----------|-------|
| DRAINAGE AREA         | = 2.8    | SQ MI |
| DESIGN FREQUENCY      | = 50     | YRS   |
| DESIGN DISCHARGE      | = 1,900  | CFS   |
| DESIGN HW ELEVATION   | = 848.50 | FT    |
| 100 YEAR DISCHARGE    | = 2,320  | CFS   |
| 100 YEAR HW ELEVATION | = 849.00 | FT    |
| OVERTOPPING FREQUENCY | = 500+   | YRS   |
| OVERTOPPING DISCHARGE | = 32,000 | CFS   |
| OVERTOPPING ELEVATION | = 873.70 | FT    |



DOCUMENT NOT CONSIDERED FINAL UNLESS ALL SIGNATURES COMPLETED

BM # 9  
N 873960 E 1658408  
-L- STA. 159+49.40 OFF 51.58' LT  
ELEV = 909.53'



**RK&K**  
P: (919) 878-9560  
8801 Six Forks Road, Forum 1, Suite 700  
Raleigh, North Carolina 27615-3960  
NC License No. F-0112  
www.rkk.com

Engineers | Construction Managers | Planners | Scientists  
Responsive People | Creative Solutions

FOR -L- PLAN SEE SHTS. 15-17

5/28/2024 12:23:03 PM R:\Projects\2577A\Roadway\Profile\136.dgn