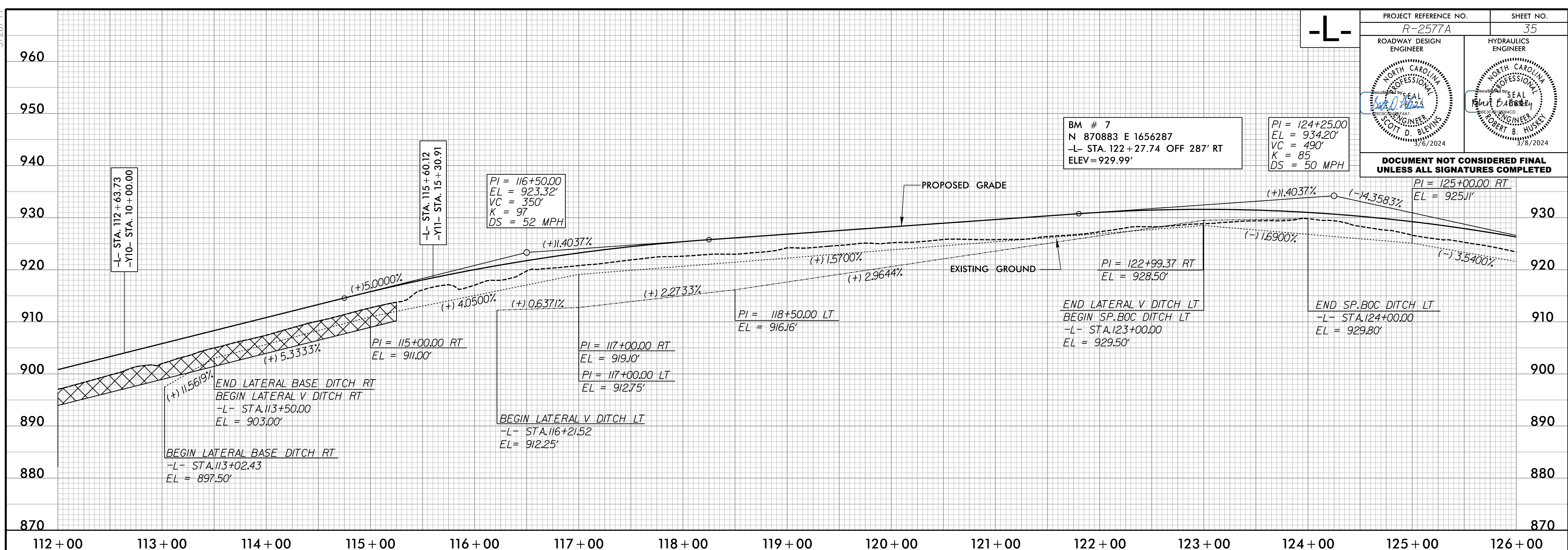


5/28/24

-L-

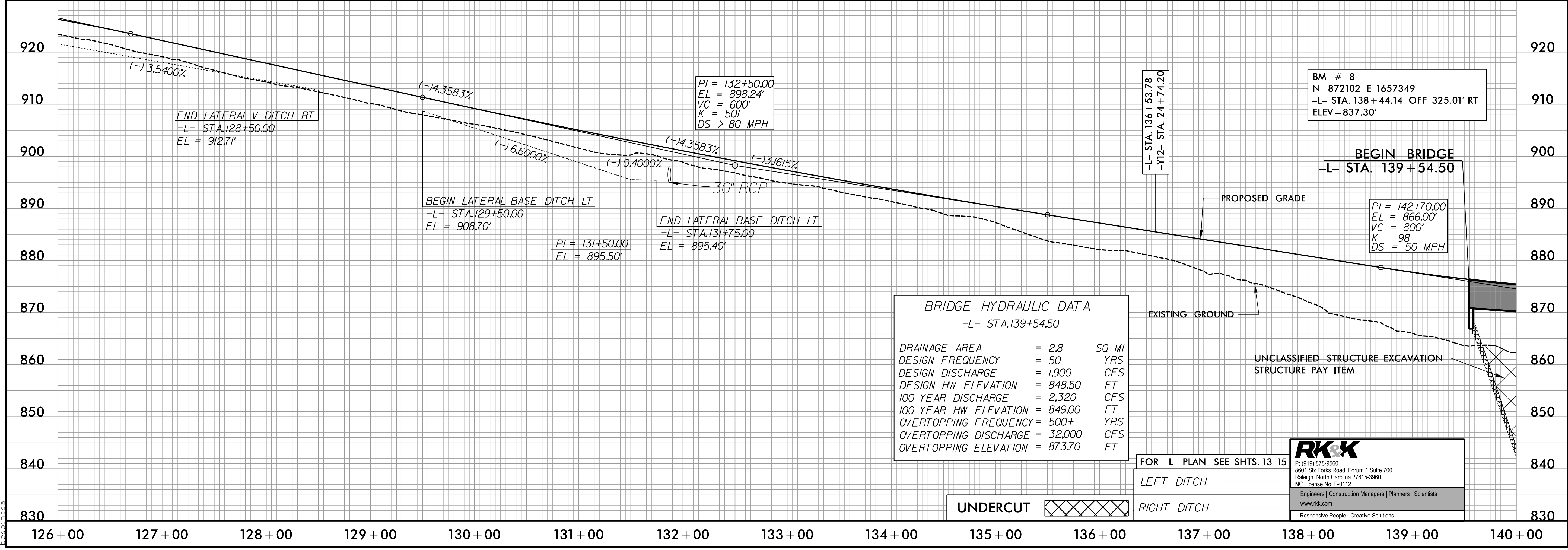
PROJECT REFERENCE NO. R-2577A	SHEET NO. 35
ROADWAY DESIGN ENGINEER <i>[Signature]</i>	HYDRAULICS ENGINEER <i>[Signature]</i>
<small>NORTH CAROLINA PROFESSIONAL ENGINEER SCOTT D. BLEWINS 7/6/2024</small>	<small>NORTH CAROLINA PROFESSIONAL ENGINEER ROBERT B. HUSKEY 7/8/2024</small>

DOCUMENT NOT CONSIDERED FINAL UNLESS ALL SIGNATURES COMPLETED



BM # 7
N 870883 E 1656287
-L- STA. 122+27.74 OFF 287' RT
ELEV = 929.99'

PI = 124+25.00
EL = 934.20'
VC = 490'
K = 85
DS = 50 MPH



-L- STA. 136+53.78
-Y12- STA. 24+74.20

BM # 8
N 872102 E 1657349
-L- STA. 138+44.14 OFF 325.01' RT
ELEV = 837.30'

BRIDGE HYDRAULIC DATA
-L- STA. 139+54.50

DRAINAGE AREA	= 2.8	SQ MI
DESIGN FREQUENCY	= 50	YRS
DESIGN DISCHARGE	= 1,900	CFS
DESIGN HW ELEVATION	= 848.50	FT
100 YEAR DISCHARGE	= 2,320	CFS
100 YEAR HW ELEVATION	= 849.00	FT
OVERTOPPING FREQUENCY	= 500+	YRS
OVERTOPPING DISCHARGE	= 32,000	CFS
OVERTOPPING ELEVATION	= 873.70	FT

FOR -L- PLAN SEE SHTS. 13-15

LEFT DITCH

RIGHT DITCH

UNDERCUT

RK&K
P: (919) 878-9560
8601 Six Forks Road, Forum 1, Suite 700
Raleigh, North Carolina 27615-3960
NC License No. F-0112

Engineers | Construction Managers | Planners | Scientists
www.rkk.com
Responsive People | Creative Solutions

P:\2023\Projects\2577A\Roadway\2577A_Roadway.p135.dgn